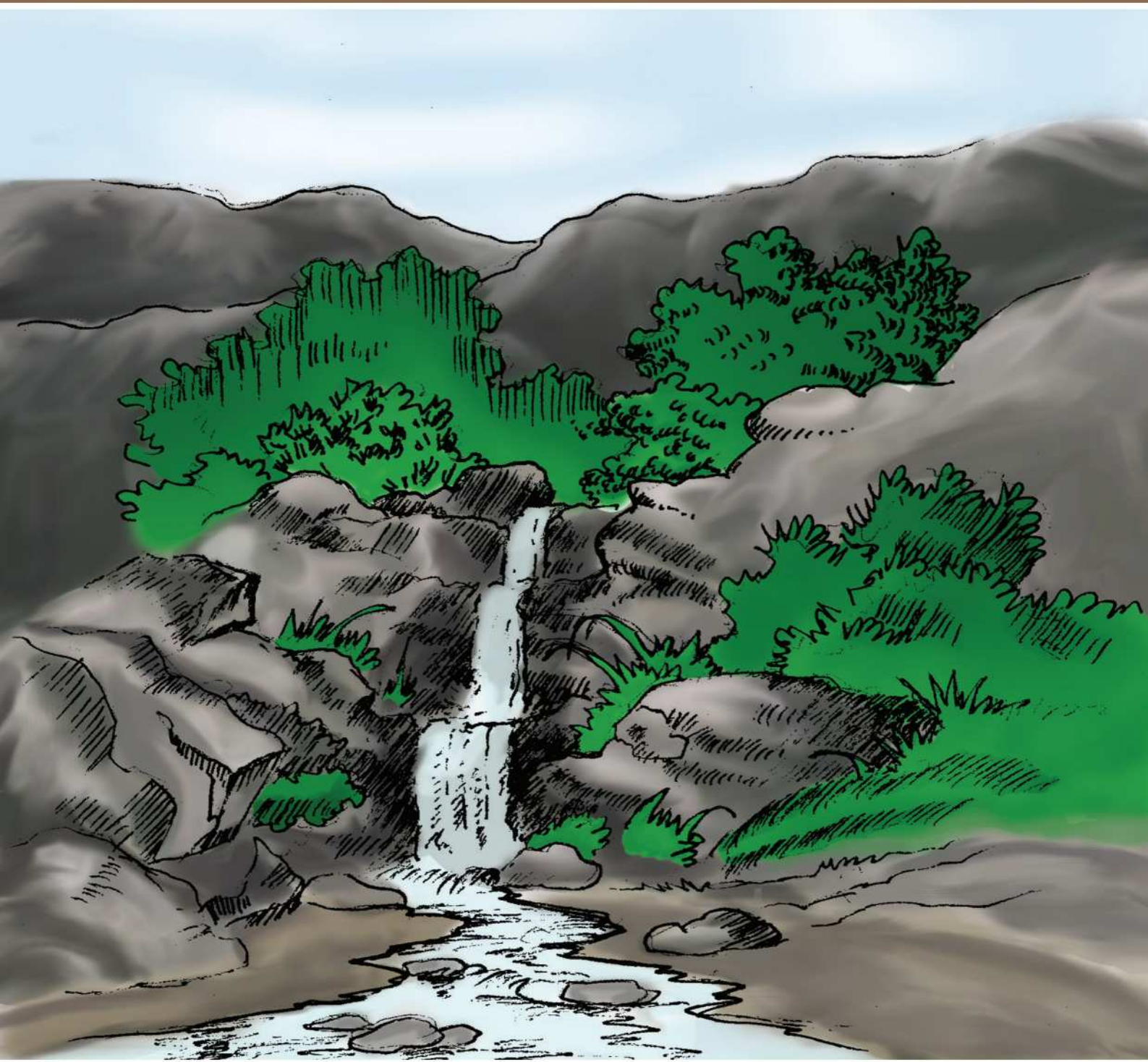


Kumtluang

BU NGANA



Pawl-V Mizo



How to Use QR codes to access digital content



diksha.gov.in/app

Type diksha.gov.in/app in your mobile browser and tap on install button

or



Search for DIKSHA in Google Play Store and tap on install button to download the app.

HOW TO ACCESS DIGITAL CONTENT USING QR CODE ON MOBILE



HOW TO ACCESS DIGITAL CONTENT USING QR CODE ON DESKTOP



Under the QR code you will find a 6 digit code



Type diksha.gov.in/as/get



Type the 6 digit QR code in the search bar



View list of content available and click on any content of your choice

Kumtluang

BU NGANA



STATE COUNCIL OF EDUCATIONAL RESEARCH AND TRAINING
MIZORAM : AIZAWL

Prescribed for use as a textbook for Class V by the State Council of Educational Research and Training (SCERT), Mizoram, Aizawl

Vide Notification No. B.12011/1/2012-EDN(SC)

Dated Aizawl, the 25th November, 2020

ALL RIGHTS RESERVED

- No part of this publication may be reproduced, stored in a retrieval system or transmitted, in any form or by any means, electronic, mechanical, photocopying, recording or otherwise: no preparation of notes, substances, explanation, keys, etc in the form of book(s) for sale based on the printed book herein is permitted, without the prior permission of the Director, State Council of Educational Research and Training (SCERT), Mizoram, Aizawl.
- This book is sold subject to the condition that it shall not, by way of trade, be lent, resold, hired out or otherwise disposed of without the publisher's consent, in any form of binding or cover other than that in which it is published.
- The correct price of this publication is the price printed on this page. Any revised price indicated by a rubber stamp or by a sticker or by any other means is incorrect and should be unacceptable.

First Edition : 2016
Sixth Edition : 2021
Copies : 14640
Price : ₹ 62.50/-

Published by :
THE DIRECTOR
STATE COUNCIL OF EDUCATIONAL RESEARCH AND TRAINING (SCERT)
MIZORAM, AIZAWL

Printed at :

Textbook Committee for Elementary Schools

Chairman : Pi Laldawngliani Chawngthu
Director
SCERT

Members : Chairman
MBSE

: Director
School Education

: Dr. Lalhmasai Chuaungo
Deptt. of Education
MZU

: Dr. Tawnenga
Principal
PUC

: Dr. Lalbiaksangi Chongthu
Vice Principal
PUC

: Principal
IASE

: State Project Director
Samagra Shiksha, Mizoram

: Principal
DIET Aizawl

: Pi Zohmingliani
Joint Director
SCERT

: Representative of MSTA

: Representative of MPTA

: Representative of MISA

Member Secretary : Pi Lalduhawmi Thomte
Deputy Director
SCERT

Sub-Committee on Mizo Textbooks

Coordinator : Pi Vanlaldiki Sailo
Joint Director
SCERT

Members : Pu C. Chhuanvawra
Member
Mizo Language Committee

: Pu Lalsangzuala
Asst. Professor
Dept. of Mizo, MZU

: Dr. Zoramdinthara
Asst. Professor
PUC

: Pu C. Laldinpuia
Deputy Controller
MBSE

: Pu Vanlalfana
Asst. Professor
IASE

: Pu Lalzarzova Kiangte
Teacher
Bungkawn Nursery M/S

: Representative of MSTA

: Representative of MPTA

: Representative of MISA

Asst. Coordinator : Pi Zoramthangi Ralte
Tutor
SCERT

THE CONSTITUTION OF INDIA

PREAMBLE

WE, THE PEOPLE OF INDIA, having solemnly resolved to constitute India into a ¹**[SOVEREIGN SOCIALIST SECULAR DEMOCRATIC REPUBLIC]** and to secure to all its citizens :

JUSTICE, social, economic and political;

LIBERTY of thought, expression, belief, faith and worship;

EQUALITY of status and of opportunity; and to promote among them all

FRATERNITY assuring the dignity of the individual and the ²[unity and integrity of the Nation];

IN OUR CONSTITUENT ASSEMBLY this twenty-sixth day of November, 1949 do **HEREBY ADOPT, ENACT AND GIVE TO OURSELVES THIS CONSTITUTION.**

1. Subs. by the Constitution (Forty-second Amendment) Act, 1976, Sec.2, for "Sovereign Democratic Republic" (w.e.f. 3.1.1977)
2. Subs. by the Constitution (Forty-second Amendment) Act, 1976, Sec.2, for "Unity of the Nation" (w.e.f. 3.1.1977)

THUHMAHRUAI

SCERT chuan Mizorama zirna changlung leh ṭha a awm theihna tura hma a lak mek reng lain RTE Act, 2009 chuan mawhphurhna thar a rawn pe a. Mizoram Elementary Education tana zirlai bithliah tur leh zir tur duang tur leh zirlaite zir thiam chin leh an hmasawna endik dan tur te duang turin Academic Authority atan a ruat a ni. Heng kan mawhphurhna tihlawhtling tura kan hma lakna atan Elementary school-ah zirlai bu thar buatsaih a ni.

RTE Act leh National Curriculum Framework 2005 te ngaih pawimawh hre reng chungah zirlai bute taima taka buatsaihtu, mi thiam leh ka thawhpuite chungah lawm thu ka sawi a. Kum 2020 – 21 aṭang khan **Energized textbook** hman ṭan a ni a. Heng textbook-ah te hian **QR code (Quick Response Code)** dah an ni a. Hei hi zirtirna puitu tur a ni.

Class I – VIII zirlai naupangte hman tur zirlai bute hi ka thawhpui zirtirtute leh zirlai naupangte hman turin lungawi tak leh chhuang takin ka hlan a. A buatsaihtuten naupangte tana zir nuam zawng tak tura an buatsaihte chu, zirlaiten nuam ti taka an zir ngei ka beisei.

Aizawl
25th Nov., 2020


LALDAWNGLIANI CHAWNGTHU
Director, SCERT
Mizoram: Aizawl

ZIRTIRNA KALPUI DAN TUR

Mizo ṭawng kan zirtir chuan a zirtu naupangte chu Mizo ṭawnga thusawi hrang hrang an ngaihthlak te hre thiam a, anmahni pawhin a ṭulna hmuna thu awmze nei leh fiah taka sawi thei tur te, Mizo ṭawnga lehkha ziak chhiar dik thei tur leh a thil hmuh leh tawnhriatte chhiar tlaka ziak chhuak thiam tura kaihhruai a tum a. Ṭawng zir thiamna atana pawimawh skill palite bakah hian mahni inenkawl theihna (life skill) te, ngaihhlut tur dik te, tunlai huna thiamna te man phaa siana, mi dangte nena chen ho thiamna te anmahniah tuh ngei tur a ni bawk. Chuvangin, hengte hi tihpui ṭhin a duhawm hle:

1. Middle School lo lut tir naupangte chuan pawl nga zir tura Mizo ṭawng an thiam tur ang an rawn thiam chhuak em tih lo enfiah phawt a pawimawh hle a ni. Naupangte entry level hriat hian an zir turah nasa takin a pui thei ang.
2. Naupangte chu thu ngaihthlak thiamtir a pawimawh a, Mizo ṭawnga thu sawi ngaihthlak tur chi hrang hrang – mi thusawi (ṭhianta thusawi) TV/Radio-a thusawi leh chhiar ri te chhawpsak a, hre thiamin an ngaithla em tih ngaihven tur a ni. An thu ngaihthlak te chu sawi chhawntir emaw, zawhna hmanga an dawnsawn thiam dan hriat tum bawk ni se.
3. Naupang tinte chu an duh zawng leh mamawh sawi chhuahna hun siamsak ṭhin tur a ni a, a hun leh hmun azira thu sawi dan an thiam theih nan kaihhruai an ngai. Mi malin emaw, a kawpin emaw, a huhovin emawa thusawina hun remchang buatsaih turin sawi hona hun te, inbiakna hun te, titina hun te, mi hmaa thusawina hun te, lemchan hmanga ṭawngna hun leh an thil hmuh leh an thil tawnhriatte sawi chhawanna (report) hun te buatsaih ṭhin tur a ni.
4. Naupangte chu lehkha chhiar thiam tak leh chhiar peih tak an nih a ngai a. Tunlaih pheh chuan lehkha chhiar an ngainat nan ṭan lak a ngai zual hle a ni. Chuvangin, Mizo ṭawng chhiar an thiam, lehkha chhiar an chin ṭhan nan chhiar tur tam tawh hluisak tur a ni. Naupangte chu lehkha chhiar tur ṭha bakah an tui zâwng âwm ngaihthuhsak a ṭul a; chuvangin, library changtlung tak neih te pawh tum a ṭha. Lehkha hi a ri leh ri lova chhiar thiam a ṭul ve ve avangin a ri lova chhiar hun leh a ria chhiar hun siam a ṭha bawk. Zirtirtuin emaw, naupang vêkin emaw a chhiar dan dika

chhiar hmasak (model reading) phawt a ṭul chang a awm. Chuti lo pawhin an chhiar lo ngaihthlak a, a chhiar dan dik kawhhamuh leh pawh a sawt tho.

5. Naupangten ziak an thiam ngei ngei a ngai a; mahse thu ziak thiam tak nih hi thil awlai a nih loh avangin tih ṭhan a, mahni an insitna leh lehkha ziah an huphurhna bo ṭhak khawpa ziah tamtir a ngai. Naupangte lehkha ziah ang ang chu ngaihhlutsak a, ziak zel tura fuih bakah an thu ziak apiang te chu tar chhuahsak ṭhin tur a ni. Pawl nga naupangte chuan hawrawppui leh punctuation dik thawkhat takin an hmang thiam tawh tura ngaih a ni a, classroom chhung leh pawnah thupui thlan sa hmang emaw, an thil hmuh leh hriat chanchin te ziahtir ni se. Heng naupangte kutchhuak hi an Portfolio-ah fel taka vawntir ni se; a remchan dana pho chhuahsaka, an nu leh pate hmuhtir ṭhin ni bawk se.
6. Naupangten Mizo ṭawng thumal tam tawk an thiam a ṭul a, an thumal zirte an hman thiam a ṭul bawk. Mizo ṭawng zir nuam an tih theih nan thumal leh sentence hmanga infiamna (language games) chi hrang hrang te neihpui ṭhin ni se. Hetiang infiamna hmang hian spelling te, lam dan dik te a zir theih a, thumal tam tak an hriat belhin a hmanna pawh an zir nghal thei bawk. Mizo ṭawng hi a muang a, media lama thawk turte tan pheih chuan nâl tak leh rang taka ṭawng thiam a pawimawh zual êm êm a ni. Quiz, extempore leh debate hmang leh inṭawng ransiak hmang tein bah lo taka ṭawng a zir theih.
7. Naupangten ṭawng an thiamna tur chuan remchanna an neih tam a ngai a, hmun hrang hrang tlawhpui te, mi chi hrang hrang kawmna hun te, an thil hmuh leh hriat an sawi chhawanna hun leh ziaka report-na hun te siamsak tur a ni. Naupang tinte chuan Diary-te, Scrap Book-te, Note Book leh portfolio-te an neih ṭheuh a ṭul a, chu chu enfel hun siamsak leh endik ṭhin tur a ni.
8. Ṭawng thiamna atan hian a tira inkaihhruaina a pawimawh êm êm a, chhutzuina a pawimawh hle bawk rualin mahnia inzir chhunzawm hi thiam tak takna ber chu a nih avangin naupangte chu zirna hmanraw ṭul ang angte khawn khawmtir ni se. Milembu, chanchinbu, zirlai bu leh thu ziak chi hrang hrangte ken khawmtir a, a vawn ṭhat leh ngaihtuah belh pawh tihtir a, hman

dawna lak chhuah te, a dah that leh te thlengin anmahni kuta dah a tha.

9. Ṭawng thiam turin classroom chhung mai a tawk lo va; hmun dang tlawha (field trip) thil thleng chanchin te chhui Chiang tura zawhna zawh te, zawh belhna te, chhanna chhinchhiah te, vawn that te an thiam an chin than nan kaihhruai tur a ni. An thil hmuh leh hriat, an chhinchhiahte chu mahni inring tawk taka an sawi chhawn emaw, an ziak chhuah emaw theih nana kaihhruai bakah Life skill te pawh zir chhuahpui tum ni se.
10. Textbook chhung leh pawna mi hmanga lemchan (role play, skit leh drama etc.) hmangin thil tam tak an thiam chhuah tura beiseite an zir thei ang a, an thiam leh thiam loh pawh a endik nghal theih ang.
11. Naupangte hian a chin chhuaka ṭawng an thiam theih nan hla (poetry) leh thu (prose) leh grammar hmanga an zir a ngai a. Hla-in zeizia a nei hrang a, thuin kalhmang a nei bawk a, chung chu grammar hmanga hriat nghehtir a ṭul a. Chuvangin, hla te phuahtir a, sentence te siamtir a, thu te phuahtir thin tur a ni. Chung hla leh thu an phuah atang chuan grammar pawh zirtir tel zel a tha. Chu bakah a hranpa pawhin zirtir bawk tur a ni.

TEHNA

Mizoramah chuan Mizo naupangten Mizo ṭawng hi an hman theuhva, an zir vek bawk avangin an thiam thawkhat theuhvin kan hria a ni mai thei a, amaherawhchu mi hneh thei leh ngaihawm taka thu sawi thiam leh mi chhiar chak ngei tura thil ziak thiam an tlem viau lawi si hi Mizo ṭawng kan zir dan mai ni lo; kan endik (evaluate) thin danin a zir loh vang a nih hmel hle mai.

Sawi tak ang khan ṭawng thiam leh thiam loh dan enfiah tur chuan naupangte an ṭawng lai tak leh ziah ang angte endik nghal zel a ṭul a. Zirtir lai leh zir hopui pahin ṭawng thiamna skill pali – ngaihthlak, sawi, chhiar leh ziak an thiam dan chu endik vek thin a ṭul hle bawk. A ngaihthlak chu a hre thiam em tih te, a sawi chuan awmzia a neiin a sawi dan a dik em tih te, chhiar dan dikin a chhiar em tih te, a ziak dik em tih te enfiah tur chuan khêk theih a ni lo va, zirtir lai meka tih nghal a ṭul. Tin, a bu chhung thu hriatna mai ni lovin, Mizo ṭawng an hman thiamna turin an hmasawn dan kawng hrang hrangin enfiah reng thin tur a ni bawk.

- 1) **Oral/Class Test:** Zirtir lai leh zirtir zawh veleh naupangte chu kâa chhang emaw, ziakin emaw test nghal zel tur a ni. Zirtirna leh evaluation hi kal kawp reng sela, zir paha endik a, endik paha zir nghal zel leh rût nawnpui ðhin tur a ni. Hetianga tih hian zirlaite an inthlahdah hman lo chang ni lovin an thiam tharte hman chhuahna (practice) remchang an nei a, a sawt bik êm êm a ni.
- 2) **Unit Test:** Class-a zirtir paha test nghal zel bakah zirlai hlawm (unit) khat zir zawh apiangin ennawna ni pah fawmin test ðhin bawk tur a ni. Naupangte an thiam tawh sa ennawna remchang leh an thiam bel loh laite hmu chhuaka thiam chiantir turin unit test neihpui ðhin tur a ni.
- 3) **Assignment/Practical/Project Work:** An zirlai nena inkungkaih thil tih tur hrang hrang siamsak ðhin a, endik tur a ni. An thiam chhuahte hmanna remchang leh thiam belh tura anmahni ngeiin an zawn chhuaha, an zir thiam tur chi an phâk tâwk mila pek ðhin bawk tur a ni. Hemi atan hian zirlai bu chhûnga mi chauh ni lo, mi dangte râwna an zawn chhuah leh tih theih thil te pawh tihtir ðhin ni se.
- 4) **Remedial Teaching:** Thiam chhuah ngei tura beiseite an thiam loh chuan zir nawnpui leh tur a ni a. Zirtir dan te thlak danglamin an thiam ngei theihna tura rût nawnpui leh tih tur tam tawk siamsak a, naupang dangte leh nu leh pate pawh hmang ðangkaia remchanna siam a pawimawh hle. Remedial teaching pek zawhah an hmasawn dan endik leh ðhin tur a ni.

Ṭawng zirtirna leh endiknaah hian a sawisel zâwng ringawt ni lo va, an tuina tur zâwng kaihhruai a hlâwk a, an phâk tâwk ang zela dâwm chhoh leh hlawhtlinna hmuhtir (fak ðhin) a pawimawh êm êm a ni. Tin, naupangte chuan evaluation sheet emaw, test book emaw nei vek sela; anmahni inteh ve thei tura kaihhruai ni se. Naupangte dinhmun chu anmahni leh an nu leh pate hnenah hriattir a, sawipui ðhin ni bawk se. An tihṭatah fak a, hmasawn an ngaihna lai kawhmmuh ðhin a ṭha. An nu leh pate pawh an fate dinhmun hrilh hriat a, an chak lohna lai leh puiah theih dan tur sawipui a ṭha hle bawk.

Middle School, pawl nga aṭanga pawl riatah chuan heng tehna hmanrua, Oral test-te, Written written test-te leh Observation hmangtea teh ðhin tur a ni a; a thiam lo deuhthe chu rût nawnpui leh ðhin tur a ni.

Assignment/home-work hi pawl ngaah chuan ni khatah minute 18 vela an tih zawh theih tur ang pek thin tur a ni a; kar khat chhungin darkar hnih awv vel ni tur a nih laiin Pawl ruk atanga pawl riatah thung chuan ni khatah darkar khat vel, kar khat chhungin darkar nga/ruk vela an tih zawh theih tur ang chin chauh pek thin tur a ni thung.

Middle school zirlai naupangte chuan kum tinin project work an nei ve thin ang a, Pawl ngaah Project pathum, pawl ruk chinah chuan project pali tal ti ngei tura beisei an ni.

Heng tehna hrang hrang test te, observation te, assignment-te leh project work-te atang hian thiam chhuah tura beiseite (expected learning outcomes) an tih theih leh theih loh dan lo chhinchhiah a, fel taka record a, a sawi fiahna nen result siam thin tur a ni. Naupang harsatna nei leh hnufum deuhte chu a bika enawnpui emaw, group work anga a thiam deuhte nena inkawptir emawa tanpui thin tur a ni.

PAWL V

Pawl V zirlaiten an thiam ngei tura beiseite chu hengte hi a ni:

1. Ngaihthlak thiam (Listening):

- i) A sawitu hmu kher lo pawhin mi thusawi leh thupuan te an hre thiam ang.
- ii) Inbiakna tluangtlan pangngai chin chu a thu kal lam leh haw lam an man thiam ang.
- iii) Mi hla hril leh thu chhamte ngaihnawm ti takin an ngaihthla thei ang.

2. Tawng thiam (Speaking):

- i) Thupui thlan sa mawl te te hmangin thu an sawi thiam ang.
- ii) Lemchannaah leh sawi honaah te an tel thei ang.
- iii) A hun leh a hmun azir zelin ngaihdam dilna te, lawm thu sawina leh vui thu emaw, lungawi lohna thu emaw te an sawi thiam ang.

3. Chhiar thiam (Reading):

- i) Dik tak leh ngaihnawm takin an chhiar thei ang.
- ii) Chanchinbu leh lehkhavute dik takin an chhiar thiam ang.

- iii) Ri lovin an chhiar thiam ang a, an chhiar awmzia an hre thei ang.
- iv) A thu chhiar aṭangin thil thleng indawt dan an man thiam ang.

4. Ziah thiam (Writing):

- i) A thu hriat sa chu hawrawppui hmanna hrang hrang – hawrawppui hliir hmanna turah te, sentence bulah te, hming bik bulah te leh a hmanna tur dangah te hmangin thu an ziah thiam ang.
- ii) Thufing ṭhenkhat leh Mizo ṭawng upa eng emaw zat an hriain a hman dan pawh an thiam ang.
- iii) Zirlai bu-a zawhnate sentence dik takin a chhanna an ziah thiam ang.
- iv) Thil lem an hmuh aṭangin thu an phuah thiam ang.
- v) Thawnthu chhumbung an ziah pum thiam ang.

5. Grammar:

Parts of Speech pariatte hming leh Mizo ṭawnga a hriih fiahna (concept) hre bel tura beisei an ni.

6. Mizo hnam ro hlu leh ziarâṅ:

- i) Mizo hnam nunphung leh ziarâṅ an hre tam deuh tawhin hlutsak nachang an hria ang.
- ii) Mizoram chanchin leh Mizo thil heng Mizo folktale te, Mizo incheina te, Mizo hnam nunphung ṭhenkhat te an hriat aṭangin ngaihsanna an nei ve tawh ang.
- iii) Hnam rohlu humhalh ngaite leh ngaihsan tur dik te an hre ve viau tawh ang.
- iv) Dan zawm pawimawhna an hre thiamin zawm duhna rilru an pu ang.

7. Thumal hriat (Vocabulary):

Mizo ṭawng thumal 2000 tal an hria ang a, an hmang thiam ang. Thumal hriat tam ṭalna leh a hmanna chi hrang hrangte hriain ṭawngkauchheh dik an hmang ṭhang ang.

TEHNA (EVALUATION)

Pawl ngaah chuan Oral, Written, Observation hmanga teh tur a ni a. Assignment/home-work hi ni khatah minute 18 vela an tih zawh theih tur ang pek thin tur a ni. Assignment/home-work chu kar khat chungin darkar hnih awh vel a ni tur a ni. Heng tehna atangte hian thiam chhuah tura beiseite (expected learning outcomes) an tih theih leh theih loh dan lo chhinchhiah tur a niin Project pathum ti tura beisei an ni.

© SCERT MIZORAM
not to be republished

CONSTITUTION OF INDIA

Part IV A (Article 51 A)

Fundamental Duties

Fundamental Duties – It shall be the duty of every citizen of India –

- (a) to abide by the Constitution and respect its ideals and institutions, the National Flag and the National Anthem;
- (b) to cherish and follow the noble ideals which inspired our national struggle for freedom;
- (c) to uphold and protect the sovereignty, unity and integrity of India;
- (d) to defend the country and render national service when called upon to do so;
- (e) to promote harmony and the spirit of common brotherhood amongst all the people of India transcending religious, linguistic and regional or sectional diversities; to renounce practices derogatory to the dignity of women;
- (f) to value and preserve the rich heritage of our composite culture;
- (g) to protect and improve the natural environment including forests, lakes, rivers, wildlife and to have compassion for living creatures;
- (h) to develop the scientific temper, humanism and the spirit of inquiry and reform;
- (i) to safeguard public property and to abjure violence;
- (j) to strive towards excellence in all spheres of individual and collective activity so that the nation constantly rises to higher levels of endeavour and achievement;
- (k) who is a parent or guardian, to provide opportunities for education to his child or, as the case may be, ward between the age of six and fourteen years.

A CHHUNG THU

UNIT	ZIRLAI	THUPUI	PHEK
I	1	Khawvel sum tinrêng leh lungflu – <i>KHB. No.532</i>	1-3
	2	Hawrawppui hmanna	4-8
	3	Khualzin leh savawm	9-12
II	4	Valtea pi birthday	13-19
	5	Punctuation	20-25
III	6	Zirtirtu leh naupangte	26-31
	7	Mi ropui – <i>Hrawva</i>	32-34
	8	Ram ngaw – <i>Vanneihluanga</i>	35-39
IV	9	Râldâwna leh Tumchhingi	40-46
	10	Ka hlu a ni	47-51
V	11	Thufing	52-55
	12	Par mawi thang vulna – <i>Liandala</i>	56-59
	13	Zing mak tak chu	60-65
VI	14	Ṭawng upa	66-69
	15	Hnam inpumkhatna – <i>R. Lallianzuala</i>	70-73
VII	16	Rimenhawihi	74-79
	17	Zo tui thiang tê – <i>L. Biakliana</i>	80-82
	18	Kairûma	83-87
VIII	19	Kutdawh thilkawm	88-93
	20	Parts of Speech	94-98

IX	21	Patechaka	99-107
	22	Teuh lo mai – <i>H.C. Sanglura</i>	108-110
	23	Mi hlawhtling i ni thei asin	111-115
X	24	Mizo incheina	116-125
	25	Hmingsanga huaisenna – <i>Liansailova</i>	126-138
	26	Thiamna leh Hmasawwna	139-143

© SCERT MIZORAM
not to be republished

ZIRLAI 1

KHAWVEL SUM TINRÊNG LEH LUNGHLU



KHB. No. 532

1. Khawvel sum tinrêng leh lunghlu,
Ka dîl lo, nawmsakna nen;
Rilru mawi leh thianghlimna chu,
Ka dîl zawk, chung zawng ai chuan.

Lawmnaa khat rilru thianghlim,
A mawi tûktinpar aiin,
Fak zai vâwr, rilru thianghlim chuan,
A ning lo, tlai ni lênin.

2. Khawvel ropuina ka dil chuan,
Sîrva ang a thlâwk bo ðhin;
Rilru ðha, thianghlim hlu tak chuan,
Kumtluang chenin min hnêm thei.

3. Ka dilna hi chhun leh zanin,
Aw chho la, fak hla angin;
Aw Pathian, Chhandamtu zarah,
Min pe rawh, rilru thianghlim.

Thu pawimawhte

lunghlu	nawmsakna	thianghlimna	sîrva
zai vâwr	kumtluang	tûktinpar	ropuina

TIH TURTE

- Zirlai bu-a mi angin a âwlahte hian dah khat rawh.
 - Rilru _____ leh thianghlimna chu.
 - (aw) _____ ang a thlâwk bo thin.
 - Kumtluang _____ min hnêm thei.
 - Aw _____ la, fak hla angin.
- Heng thute hi 'leh' hmangin ziak zawm rawh.

(a) Sum tinrêng		zanin
(aw) Rilru mawi		lungflu
(b) Chhun	leh	thianghlimna
(ch) Tûktinpar		chhandamtu
(d) Pathian		chuai
- Heng hla thute hi han hrilh fiah teh.
 - sîrva
 - (aw) zai vâwr
 - kumtluang
 - (ch) fak hla
- Khawvel ropuina ral leh mai thinte chu engte nge ni ang? Zirtirtu hovin sawi khawm ula, blackboard-ah ziak chhuak rawh u.
- Hengte hi han sawi zau teh.
 - rilru thianghlim _____

 - (aw) rilru tha _____

(b) rilru tluang _____

6. Heng thute hi a modified form-in han dah teh.
Entir nan: lian – len.

- (a) thlâwk _____
(aw) khat _____
(b) ʈha _____
(ch) thei _____
(d) lêng _____

7. Heng zawhnate hi chhang rawh.

- (a) Sava ni ta la, khawi hmunah nge thlawh i châk ber ang? I châk chhan eng nge ni?
(aw) Thil dilna hla phuah ve ta la, eng nge i dil ang?
(b) Hla phuahtu hian eng nge sirva anga thlawk bo a tih?

© SCERT AND ORAM
not to be republished

ZIRLAI 2

HAWRAWPPUI HMANNA



Hawrawppui hmanna hi hriat chian a t̄ul hle. Duh hun huna hman mai mai te hi a t̄ha lo. A hmanna tur taka hman loh chuan thuziak a zahawm thei lo.

Mizo t̄awnga thu kan ziaha, hawrawppui kan hman thinnate chu heng hi a ni.

1. Hawrawppui hlir hmanna:

Lehkhabu hming te, lehkhabu bung thupui te, essay leh article thupui te leh lam tawi t̄henkhatte hi hawrawppui hlira ziah a ni tlangpui. Tunlaih erawh chuan hawrawppui hmang lo te pawh an awm ta.

Entir nan:

- | | | | |
|------|--------------------|---|---------------------|
| (a) | Lehkhabu hming | - | KRISTIAN HLA BU |
| (aw) | Bung thupui | - | BUNG 4, AN INREM TA |
| (b) | Essay thupui | - | TLAWMNGAIHNA |
| (ch) | Article thupui | - | HRISELNA |
| (d) | Lam tawi t̄henkhat | - | MBSE, PWD, SCERT |

2. Kristiante Pathian leh a hming dang bulah:

Entir nan: Pathian, Lalpa, Jehova, Awma, Chungnungbera, Pa, Lalber, Isua, Krista, Immanuela, Thlarau Thianghlim, Thlamuantu.

3. Hming bik zawng zawng bulah:

Hming bik rêng rêng chu a bulah hawrawppui hman zel tur a ni.

Entir nan:

- | | | | |
|------|----------------|---|---------------------------------|
| (a) | Mihring hming | - | Seikunga, Dingpuii |
| (aw) | Ram hming | - | Denmark, India |
| (b) | State hming | - | Karnataka, Mizoram |
| (ch) | District hming | - | Lawngtlai, Mamit |
| (d) | Khaw hming | - | Biate, Kolasib |
| (e) | Lui hming | - | Serlui, Chhimtuipui |
| (f) | Tlang hming | - | Phawngpui, T̄an tlang |
| (g) | Dil hming | - | Rih d̄il, Palak d̄il |
| (ng) | Hall hming | - | Saikûti Hall, Dokulha Hall |
| (h) | Thla hming | - | October, V̄au thla |
| (i) | Chawlhkar ni | - | Pathianni, Ningani, |
| (j) | Ni pawimawh | - | Krismas , Chapchar k̄ut |
| (k) | P̄uk hming | - | Khuangchêra p̄uk, L̄amsial p̄uk |

4. Sentence bul t̄annaah:

Entir nan: Tui ren thiam lo chuan pawisa pawh an ren thiam lo duh hle.

5. Khungna leh chungna t̄ea chung t̄annaah:

Entir nan: Vahmim chuan, “Z̄awngte., i nuin, ‘Tui lo chawi rawh se,’ a tih kha,” a ti a.

6. Hla tlar bul berah:

Entir nan: *Khawngaihna mak, mawi leh duhawm,
Sual riangvai chhandamna,
Suala bo hnu min zawng hmu ta,
Mitdel mit varna chu.*

7. Hming hmaa nihna dah bulah:

Entir nan: Rev. Ringliana, Prof. Rozuala, Nl. Remi,
Tv. Dawngkima, Sis. Dengmawii, Mr. Sena.

8. Lam tawia dah theih tur thumal bulah:

Entir nan: Ṭhalai Kristian Pawl (ṬKP),
Mizoram Upa Pawl (MUP).

9. Tawpna, zawhna leh makna dawtah:

Entir nan: Hei ka lo kal ta e. Eng nge min duhna?
Khawiah nge a kal tak? Lo kal leh teh se.
E heu! Ram a kang! Ti r'u i ṭhelh ang u.

Amaherawhchu zawhna leh makna dawtah bik hian
hawrawppui dah a ṭul loh chang a awm.

Entir nan: Lalan, “I lâm ngai em?” mi ti a.
Dinga damlo chuan, “Awi ka nu!” a ti a.
Ruihhlo vanga kan buaina hi kan ngawihsan
reng mai dawn em ni? tia inzawh loh theih
a ni lo.

TIH TURTE

1. Heng hi a lam tawi han ziak teh.
 - (a) United Nations Organisation
 - (aw) Kristian Ṭhalai Pawl
 - (b) Salvation Army Youth
 - (ch) Mizoram Football Association
 - (d) Middle School Teachers' Association
 - (e) Penticostal Youth Department

2. Lehkhabu ziak dawn ta la, a bu hming leh a bung thupui engtin nge i ziah ang?

3. Hming bik i hriat apiang 20 ziak rawh.

4. I hla hriat zinga i duh ber chang khat han ziak teh.

5. A dik zawnah **D**, dik lo zawnah **X** dah rawh.
 - (a) Lui leh tlang hmingte hi hming bik a ni.
 - (aw) Pathian hming rêng rêng chu hawrawppuia a bul ziah vek tur a ni.
 - (b) Hla tlar bulah hawrawppui hman a ngai lo.
 - (ch) Tawpna a awm apiangin a dawtah hawrawppui hman zel tur.
 - (d) Hawrawppui hi duh hun hunah hman tur a ni.

6. Chawlhkar ni hming han ziak chhuak teh.

-
-
-
7. Mizoram khaw hming i duh duh 10 nalh takin ziak rawh.
8. Mizoram tlang hming i hriat panga sawi la, chung zingah chuan a hmunah emaw, ralkhat aṭang emawa i hmuh tawh a awm chuan a chanchin sentence hnih talin ziak bawk ang che. Hmuh i nei lo a nih chuan i hmuh châk ber tlang hming sawi la; i hmuh châkna chhan sawi bawk ang che.
9. A hnuaia thu hi ziak la, hawrawppui hmanna tur apiangah hawrawppui dah ang che.
Vawi khat chu lala leh liana hi an inkawm a. lala chuan, “liana, arpui nge upa artui?” a ti a. liana chuan, “arpui,” a ti a. lala chuan, “artui asin upa zawk. arpui kha artui aṭanga lo piang chauh alawm,” a ti a. liana chuan, “arpui a tui phawt lohvin artui a lo awm ringawt thei dawn em ni?” a ti a. an sawi ngai chu an sawi an sawi ve ve a, an inhnial an inhnial a, a tu mah mah an dang duh si lo. rei fe hnuaia chuan liana chuan, “pathianin artui a siam hranpa lo, arpui leh arpa a siam a; tichuan arpui chu a tui a, artui a lo awm ta chauh alawm. arpui a upa zawk Chiang a ni,” a ti a. lala chuan hnial ngaihna reng a hre ta lo va.
10. Dil hming i hriat apiang hawrawppui hlirin han ziak teh.

ZIRLAI 3

KHUALZIN LEH SAVAWM



Khaw kar kawng reh tak maiah hian khualzin pahnih hi an kal dũn a. An chhuah hma aṭangin hlauhawm eng pawh lo thleng se, intlansan lova inpui tawn zel turin an intiam bawk a.

Thui pawh an la kal hma chuan hnim buk kar aṭang hian savawm a lo chhuak a, khualzin pahnih te chu a rawn pan ta ngut ngut mai a. Khualzin pakhat zawk chu rang takin thingah a lawn vat a. Pakhat zawk erawh chuan tlanchhiatna hun a nei tawh lo tih a inhria a, leiah a tlu tawp a, a thi der ta ngawt mai a.



Thâwk pawh thaw ngam lova kawng laia a mu reng chu savawm chuan a zuk hnim a, a beng bulah te chuan a hmuin

a zuk nûl thuak thuak a. Chutah a rûm dut a, a thi tawh ni-ah a ngai a, savawm hian mitthi tawh hnu an khawih ngai loh avangin engtin mah ti lovin a kalsan leh ta mai a.

Savawm chu hmuh phâk lohva a kal bo hnu fêah thing kunga lawn zawk chu a lo chhuk a, zak ru tak chungin a ðhianpa chu a va pan a, a ðhianpa chu lung chungah hian a lo ðhu tawh a.

Thinga lawn zawk chuan, “Kan va han chesual nasa teuh ve le. Kha, savawm khan i beng te kha a rawn hnim thuak thuak a, a hrilhru che ni tlatin ka hre lehngal a, eng thu chiah nge maw a hrilh che le?” tiin a ðhianpa chu a zawt ta a.

Ani chuan a ðhianpa chu a en ang kel kawl a, “Eng thu dang sawi hran lo ve, ni dangah chuan nang anga ðhian dawihzep hi kawp tawh lo turin min râwn a ni,” a ti ta a.

Thu pawimawhte

khualzin	intlansan	inthurual	intiam
hmachhawn	tlanchhiatna	dawihzep	nûl
kel kawl			

TIH TURTE

1. Heng zawhnate hi chhang rawh.
 - (a) Khualzin pahnihte khan an zin chhuah hma khan eng nge an intiam?
 - (aw) Khualzinte kha savawm an tawh khan engtin nge an awm?
 - (b) Khualzin thi der zawk hnenah khan savawm khan thu a sawi tak takin i ring em?

2. Heng thu hmang hian a âwlte hi dah khat rawh.
lung, dawihzep, thingah, mitthi
- (a) Savawm an hmuh khan ðhian pakhat zawk kha _____
 a lawn.
- (aw) Savawm hian _____ tawh hnu a khawih ngai lo.
- (b) “Þhian _____ kawp tawh lo turin min râwn a ni.”
- (ch) A ðhianpa chu _____ chungah hian a lo ðhu a.

3. A thu epte ziaak la, chung a thu epte hmang tel zel chuan
 thu phuah rawh.
- dawihzep _____
- hla _____
- nung _____
- lâwn _____
- ding _____

4. Heng thumal pangngai leh a modified form thute hmang
 hian sentence siam ve ve rawh.
- thleng _____
- thlen _____
- chhuak _____
- chhuah _____
- tlanchhia _____
- tlanchhiat _____

5. A hnuaia thute hi hawrawppui hman dan tur dik taka
 hmangin ziaak rawh.

*Lala chuan a ðhianpa hnenah, “kum eng zat nge i nih?” a
 ti a. thanga chuan, “pawl eng zat nge i zir?” a ti ve thung
 a. lawma chuan, “pi zari te, pu siama te, parmawii te,
 tlansangi te, rokhumi te an lo kal ve asin,” a ti chûl a.*

6. Bawm chhunga thu hmang hian sentence han siam teh.

kawng reh	eng pawh lo thleng se
va hnim	pan ngat ngat
teuh kher mai	tlu tawp

7. A hnuaia thute hi a inmil thlang chhuak rawh.

kawng	khualzin	inthurual	lamliau
let tawp	lungruah	zin mi	tlu chawrh

8. **Project**

In thiante zingah inkawm ngeih deuh an awm em zawng chhuak la, a hrang ve vein a thian nena an inkawm tan dan te, thil an tih dun thin te leh a thian a ngainat chhan te zâwt ang che. Chu chu i note buah tha takin chhinchhiah la, chumi hnuaia an pahnihin kâwm leh ang che. Tichuan, thian tha hlutna in sawi ho dawn nia.

Thian pakhatna	Thian pahnihna
An inkawm tan dan	
Thil an tih dun thinte	
An inngainat chhan	

ZIRLAI 4

VALTEA PI BIRTHDAY



Ni khat chu Maduhi hian a nu hnenah, “Ka nu, ka pi birthday kha eng tik nge kha?” a ti a. A nu chuan, “Eni tak, naktuk hi a ni reng mai. Ka va theihnghilh teuh ve aw!” a ti a. Maduhi chuan, “Ka nu, ka pi birthday chu engtin nge kan lawm ang?” a ti a. A nu chuan, “Eng nge tihsak i duh a?” a ti a. Maduhi chuan a ngaihtuah vang vang a, a nu hnenah chuan, “Ka nu, ka pi chu ka pu nen chaw eiah sawm ila,” a ti a. A nu chuan, “A tha ngawt ang. Kan sawm dawn nia,” a ti a.

A tuk zingah chuan Maduhi nu chuan Maduhi hnenah chuan, “Maduh, i nau nen khan i pi leh pute chu chaw eiah chuan va sawm ta che u,” a ti a. Maduhi leh a nau Valtea chu phûr takin a pi leh pute chaw eia sawm tur chuan an tho vat a. A nu chuan, “Valte, kawng kân ngaihna laiah kha chuan fimkhur ang che u aw. Ho têa chetsual theih a ni a, kawng kân hi fimkhur êm êm tur a ni,” a ti a. Maduhi chuan, “Ka nu, ngaihtuah mah ta che, ka kai tlat dawn alawm,” a ti a. Tichuan, a pi leh pute chaw eia sawm tur chuan an kal ta a.

Kawngpui an va thlen chuan motor a lo tlan dûl dûl mai a. Valtea chuan, “Ka u, motor hi a tam si a, engtin nge kawng hi kan kân ang?” a ti a. Maduhi chuan, a en vang vang a, “Valte, lo kal rawh ka kai ang che. Kawng kân dawn chuan vei lam en hmasa phawt la, chumi zawhah ding lam en leh la, chumi zawhah vei lam en leh la; tichuan, motor a lo kal loh chuan kân chauh tur a ni,” a ti a. Valtea chuan, “Ka u, i sawi ang chuan han ti chhin

teh,” a ti a. Maduhi chuan a nau chu a kai a, “Hawh le Valte,” tih pahin a vei lam a en a, a ding lam a en leh a, vei lam a en leh hnuah kawng chu an kân ta a. Maduhi chuan, “Valte, ti khan nangmahin i kân thei tawh ang em?” a ti a. Valtea chuan, “Ka hre lo le, a hlauhawm ka ti e,” a ti a. Maduhi chuan, “Nia, kawng kân hi a hlauhawm lutuk asin. Fimkhur loh chuan motor-in na takin min su thei a, thihna hial pawh a thleng thei a ni. Mahse, i la thiam ve mai ang,” a ti a.



Titi bawrh bawrh chung chuan a pi leh pute in chu an thleng ta a. Maduhi pi leh pute chuan ni lum an lo ai a. Maduhi-te unau an hmuh chuan hlim takin, “E he, Valte, Maduh, in lo kal a ni maw? Eng nge in rawn tih dawn zing zingah?” a pi chuan a lo ti chûl a. Maduhi chuan, “Ih maw, ka pi, i birthday kha eng tik nge kha?” a tifiyam vel a. A pi chuan phûr takin, “E he, vawiin hi a ni reng mai a,” a ti a. Valtea chuan, “Ka pi, i birthday a ni si a, tlaiah ka pu nen chaw ei turin kan rawn sawm che u a,” a ti a. A

pu chuan hlim takin, “Valte, in va fel êm êm ve! Kan lo kal ngei ngei ang,” a ti a. Maduhi chuan, “Nia, ka pi, lo kal ngei ngei rawh u aw. I birthday kan lawm dawn alawm,” a ti a, an hlim tlang hle mai a. Valtea chuan, “Ka pu, nangmahniin in lo kal thei ang em? Hruai in ngai ang em?” a ti a. A pu chuan, “In hah lutuk ang e, keimahniin kan lo kal mai ang,” a ti a. Valtea chuan, “Ka pu, kawng i kân dawn reng rengin i vei lam i en phawt ang a; tichuan, i ding lam i en leh ang a, chumi zawhah vei lam i en leh ang a, motor a awm loh chuan i kân chauh dawn nia aw,” a ti a. A pu chuan nui var var chungin, “Valte, i va hre êm êm ve, i sawi ang chuan kawng ka kân thin tawh ngei ang,” a ti a. Valtea chuan intithei takin, “U Maduhin khati khan min hrilh a, awlsam deuhvin kawng chu kan kân mai alawm,” a ti a.

Maduhi leh Valtea-te unau chu a pi leh pu chaw eia an sawm zawh chuan an in lam panin an haw leh ta a. Kalkawngah chuan an titi bawrh bawrh a. Valtea chuan, “Ka u, kawng kân dan kha engtin nge i hriat a?” a ti a. Maduhi chuan, “Sir Zikan min hrilh thin a, a dang pawh a sawi teuh mai,” a ti a. Maduhi chuan a sawi zawm zel a, “Sir Zika chuan motor-in min sut te hi a hlau êm êm a, fimkhur turin min chah nasa thei lutuk. ‘Mihring kan tam telh telh a, motor a tam telh telh bawk si avang hian chetsualna pawh a tam tawh êm êm a; chuvangin, kan chetsual loh nan kawnga kan kal danah te, kawng kan kân danah te hian theihpatawpa fimkhur a pawimawh êm êm a ni,’ a ti,” a ti a.

Valtea chuan, “Ka u, kawnga kal dan bik a awm em ni?” a ti a. Maduhi chuan, “Awm e, ih maw, kawnga i kal reng reng chuan i vei lam zelah kal la; tichuan, mi i su lo vang a, mi pawhin an su lo mai ang che,” a ti a. Valtea chuan mak ti takin a ngaihtuah nauh nauh va, ka ti ve tawh ngei ngei ang a ti rilru a.

In an thlen chuan Valtea chuan a pa hnenah a u Maduhi thil hrihthe chu a sawi a, a pa chuan, “E, Valte, i u chuan thil tha tak a hrih che a nih chu, vawng tlat ang che. Kalkawnga kan kal velnaah hian chetsual theih tak a ni rêng a ni. Mi tam takin nunna hial an lo chên tawh thin asin,” a ti a. Valtea chuan, “Ka fimkhur thin tawh ngawt ang,” a ti a. A pa chuan, “Khawpuiah chuan kea kalna tur bik hi kawng sirah siam a ni thin a, kawng kâna lai tur bik an siam bawk thin. Kawng kâna lai tur chu a chhinchhiah nan rawng var leh dumin an hnawih tial thin a, a hmingah ‘zebra crossing’ an ti,” a ti a.



Valtea nu chu pindan atangin a lo chhuak a, “Valte, eng nge in sawi tâk bawrh bawrh a? I pite chu an lo kal dawn em?” a ti a. Valtea chuan, “Kal dawn e, ih maw, ka nu, U Maduhi leh ka pa hian kawnga kal dan te, kawng kân dan te min hrih a,” a ti a. “A ni maw, a pawimawh rêng asin. Hrih nachang che ka lo hre lo a ni. Engte nge an hrih che chu?” a ti a. Valte chuan, “Lo chhinchhiah rawh aw.

1. Kawng kân dawn rêng rêngin vei lam en a, ding lam en leh a, vei lam en leh phawt tur.
2. Kalkawnga kal rêng rêngin mahni vei lam zelah kal tur.
3. Khawpuiah chuan kea kalna tur bik an siam thin a, tah chuan kal zel tur.
4. Khawpuiah chuan kawng kâna lai tur bik ‘zebra crossing’ an siam thin, chutah chauh chuan kawng kân tur,” a ti a.

A nu chuan phûr takin, “Valte, i va hre thei êm êm ve. Ti kha chuan i kawng kal pawh i him sawt dawn a ni. I thiante pawh hrilh ve zel rawh aw, a pawimawh a nia.” a ti a.

Chutia an tawng chûl lai chuan a pi leh pute chu an lo thleng ta a. Valtea-te unau chuan hlim takin, “Happy Birthday,” tiin chibai an lo bûk a. Valtea chuan a pu hnenah chuan, “Engtin nge him taka in lo thlen theih? A va lawmawm êm!” a ti a. A pu chuan, “Aw, Valte, min hrilh ang tak khan zebra crossing-ah fimkhur takin kawngpui kan rawn kân alawm,” a ti a. Tichuan, Pathian hnena lawm thu an sawi zawh chuan a pi birthday lawmna chawhlui chu hlim takin an kil ho ta a.

Thu pawimawhte

him	nauh nauh	kân	titi
chetsual	ding lam	vei lam	theihpatawp

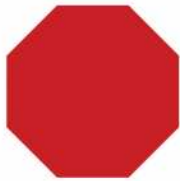
TIH TURTE

1. (a) Kawng kân dawna hriat reng tur kha eng nge ni?
(aw) Kalkawnga kan kalin khawi laiah nge kan kal ang?

2. A dik ber thlang chhuak rawh.
 - (a) Valtea pi leh pute kha engti turin nge an sawm?
 - (i) leng turin
 - (ii) chaw ei turin
 - (iii) riak turin
 - (aw) Kea kalna tur bik kha khawiah nge an siam?
 - (i) kawng chhakah
 - (ii) khawpuiah
 - (iii) thingtlangah
 - (b) Kawng kâna lai tur bik rawng dum leh vara hnawih tjal hi-
 - (i) crossing an ti
 - (ii) road block an ti
 - (iii) zebra crossing an ti
 - (ch) Eng hunah nge fimkhur êm êm a ngaih?
 - (i) kawng kân dawnin
 - (ii) len chhuah dawnin
 - (iii) infiamnaah

3. Heng chhinchhiahnate (sign) hi eng tihna nge sawi teh.





4. **Activity**

In zirlai buin kawng kân dan tur a sawi ang hian, in zirtirtu hovin han ti ve teh u le. (Group-a inthen theuh ni se, kawngpuiah kan tihpui theih chuan duhthusam.

5.



A chungamilem hmang khian thu han phuah teh.

6. Fimkhur taka kawnga kan kal a tulnate sawi ho ula. Ziak chhuak rawh u.

ZIRLAI 5

PUNCTUATION



Punctuation chu dik tak leh nuam taka chhiar theih tura thu ziah dan a ni mai a; chawlhna tur chhinchhiahna chi hrang hrang a awm a; chung chhinchhiahnate chu **punctuation mark** tih a ni. Tuna chhinchhiahna kan zir tur hi lehkha chhiar apiangin a ziaktu sawi tum tak kan hriat chian theihna tur a ni.

1. Comma (,):

Comma chu rei lo têt chawlhna turah an dah ðhin. Thu sawi emaw, thu ziah emaw tifiyah tura thumal tihhran ngai leh tlema thu hlawm dang deuh chin tichiang tura dâidanna a ni. Comma hmanna tlangpui chu hengte hi a ni:

(a) Thil chi hrang hrang tihhran nan leh ‘te’ hmanga thu hrang hrang ziah khawm dawnin an hmang ðhin.

Entir nan: Chem te, tuboh te, perek te rawn keng teh. (‘te’ hnukung berah chuan comma dah a ngai lo.)

(aw) Thu chu kohna thu a nih chuan comma an dah ðhin:

Entir nan: Ka pu, i dam em?
Bawihte, lo kal lawk teh.

(b) Mi thu sawi, sawi chhawn lehna chhinchhiahna hman dawn chiaah comma dah zel tur a ni a, khung lêt leh dawnah pawh zawhna leh makna (? leh !) a awm te a nih loh chuan dah zêl tur a ni bawk.

Entir nan: Isuan, “Ka Pa, anni hi ngaidam rawh,”
a ti a.

(ch) Lekhathawnah - kohna leh a tawp siamnaah:

Entir nan: Ka pu,
I rin tlak,

2. Tawpna (Full stop) (.):

Tawpna chhinchhiahna hi a hmanna tlangpui ber chu sentence tawpah a ni a, serial number leh roll number ding lam chiahah te, decimal point chinah te pawh hman a ni ve thin.

Entir nan: Ka ram ka hmangaih.
B.A., V.C.P., Y.M.A, U.N.O.
Serial/Roll No. 1. 2. 3.
Decimal point 3.7

3. Zawhna chhinchhiahna (?):

Sap tawng chuan Interrogation mark an ti a; Question mark tiin an sawi bawk; a hming ang hian zawhna tawpah an dah thin.

Entir nan: In dam tlang em?
I lo kal dawn lo vem ni?
Eng nge i tih dawn?
Min puih i tum maw?

4. Makna (!):

Hei hi makna chhinchhiahna tih a ni a, uarna chhinchhiahna a ni mah zawk. Rilru khawih tak thil lo thleng thut leh phurna tihlanna tawngkam tawpah an dah thin. Mak tih viauah pawh an dah thin bawk.

Entir nan: Ka pass ve hlauh mai!
 Awi ka nu, ka hlau lutuk!
 Chu, thlipui a lo tleh ta!
 E he! a va han mak ngai ve le!

5. Colon (:):

Thu sawi tur tak sawi hmaa a huap zau zawk - a tlangpui emaw, a kalhmang emaw hmanga sawi hawnna tawpah colon hi hman thin a ni.

Entir nan: Kum khata hunpui pali awmte
 chu: nipui, fur, favang leh thlasik an
 ni.
 Chawk chhuak rawh: 6+(9-4)
 Tlai dar 3:30-ah sikul kan bang.

A chang chuan a hma chiaha hawrawp dawtah ni kher lovin hetiang te pawh hian an hmang ta.

Govt. Ainawn M/S result chu:

Exam beitu zat	:	25
Distinction	:	1
First Division	:	4
Fail	:	5
Pass Percentage	:	80%

6. Khungna (“ ”):

Khungna hi mi thu sawi, an tawngkam ang taka sawi chhawn leh a niha an sawi chhawn chin chiaha khungna a ni.

Entir nan: Arpuisentê chuan, “Tuin nge buh hi
 tuh ang?” a ti a. Ui chuan, “Kei chuan
 ka tuh lo vang,” a ti a.

7. Hyphen (-):

Hyphen hi thu pahnih zawmna leh dâidanna a ni.

- (1) **Zawmna a nih dan:** Thumal inzawm tur rêng ni si lo, zawm anga dah ngai si zawm nan. Tin, tlar khata thu leng kim lo a awmin a leng chin tawpa thumal chu zawm thin a niha a then a len loh chuan a zawm a la awm tih entir nan.

Entir nan: Mizo-Anglo, Kawl-vai, YMA-MUP thawh hona, Independence day-ah Lalan lawmman a dawng.

- (2) **Dâidanna a nih dan:** Foreign word leh a suffix te, figure leh a suffix te leh suffix avanga thu awmze phir nei thei chi a lo awmin ngaih sual a nih lohna tura a suffix chin dâidan nan.

Entir nan: London-ah; kum 2016-ah; January ni 15-ah luh leh tur; sual ni-a a lan avangin.

TIH TURTE

1. Comma, fullstop, makna leh zawhna chhinchhiahna a tulna apiangah dah rawh.
- (a) Lo kal la min pui rawh
 - (aw) Chaw i ei tawh em
 - (b) Lala te Thanga te Zova te an lo kal

- (ch) Kal ve i tum na nge
 (d) E khai a va mak em
 (e) Isuan naupangte a hmangaih a, mal a lo sawm
2. Heng thute hi chhiar la, comma dahna tur apiangah dah rawh.
- (a) Thil lei turte chu - purûn te aieng te hmarcha te sawhthing te a ni.
 (aw) Duha hetah hian lo kal lawk teh.
 (b) Khumi chu M.Sc. B.D. a ni.
 (ch) A lo kal a chaw a ei a a haw leh ta.
 (d) Doktor-in “Hlira hlau suh. I dam leh thuai ang” a ti.
3. Heng thu tawpah hian eng chhinchhiahna nge dah tur ni ang?
- (a) Tûkthuan ei a hun ta e
 (aw) Ruah a sûr i ring em
 (b) Zirtirtuin a ko che a nia
 (ch) Haleluiah! Amen
 (d) Nang i chhâng tha em
 (e) Chu! Lir a nghing
4. Hyphen dahna tur apiangah dah rawh.
- (a) Kum 2002 ah Rome ah ka zin.
 (aw) Ni 8 ah Xray in an en dawn.
 (b) Roberta leh Janei te an innei dawn.
 (ch) A nupui chu Anglo Indian a ni.
 (d) Director in, “Dar 10 ah lo kal rawh,” a ti.

5. Heng thute hi a hawrawp leh chhinchhiahna hman dan tihdik ngai lai apiang tidik rawh.
 - (a) Zâwngtê chuan “chawi zo tawh dim diam,” a ti a.
 - (aw) Exam tiṭha zualte chu Dinga te Mawii te Biaki te an ni.
 - (b) lalthanga fate chu rimawii te, rodinga te, didini te biaknia te an ni.
 - (ch) Mizoram luiah chuan chhimtuipui te tlawng te tuivai te hi a lian zual an ni.
 - (d) nilaini dawt chiah hi ningani a ni.

6. A hnuaia thute hi nalh takin ziak rawh.

Hnathawh hi hlimna a ni.
 Thawk lo chuan ei pawh ei suh se.
 Mi rinawm hi an ngaih sanawm ber mai.
 Rinawmna hi um zel tur a ni.
 Taihmâk hi malsawm dawnna a ni.
 Mi taima chu a tlachham ngai lo.
 Mi zaidam chu an nun a haadam.

7. Punctuation dah ṭulna lai apiangah dah rawh.

Ngai teh u Pain min hmangaihna chu a va nasa êm Pathian faahthe min vuah tak hi chutiang chu kan ni reng e

ZIRLAI 6



ZIRTIRTU LEH NAUPANGTE

Zirtirtu: Mawii te, Dika te leh Rinawma te kha lo kal teh u. Thil hrih tur che u ka nei a nia. Hei in lo lian ve ta hle mai. Nakin lawkah chuan in puitling ve mai ang a, chhungkuaah leh khawtlangah mi pawimawh tak in la ni dawn a ni.

Pathian thu chuan, “Sum tam tak aiin hming that hi thlan zawk tur a ni,” a ti a. Mi hming tha ni tur chuan dik leh rinawm a ngai a. Mi dik leh nun tha chu miten an ngai sang thin.



Mawii: Ih maw, ka pu, Pu Duhâma te chhung saw, in tha deuh an nei a; mahse, an inhau reng mai a, an hlim ve ngai lo. Hmanah an ina ka kal laiin an inhau va, ka chhuak leh vat a, Rinawmate inah ka kal daih. An chhungkua saw a nawm hmel ka ti, Rinawma hi a vannei ngawt mai.

Zirtirtu: A ni ngawt mai. Rinawma pa hi mi rinawm leh dik tak mai a ni. Hman deuh lawk pawh khan pawisa tam tham deuh a chhar a, a neitu a zawng chhuak a, a pe kir leh vek asin. Rinawma pa ang hi ni theuh ila kan ram hi a nuam ngawt ang.

Rinawma: Mawiite chhungkua pawh hi a nawm hmel lutuk. A nu leh pa an fel si, a pa saw mi tlawmngai a ni a. Ka nu pawhin, “Mawii pa hi kan vêngah chuan a fel ber ang, mi taima leh tlawmngai a ni a, kan vênga an awm hi a lawmawm,” a ti thin.

Zirtirtu: Dika, nang mi eng ang nge i ngaih san ve le?

Dika: E, ka pu, kei chu maw, ngaih san lam aiin ngaih san loh lam a ni. Exam laia entawn chingte hi an ho ka ti. An entawn a, an thiam chuang si lo. Pass pawh ni se ka ngai sâng lo. Mahni thiam anga chhan mai hi a tha ka ti.

Zirtirtu: Ni khawp mai. Exam laia entawn chingte chu mahni inbum mai an ni a, mi puitling leh thiam tak takah an chhuak ngai lo. Rukru te, mi bum hmang te, hlêp rûk ching te hi hausa leh lal deuh pawh ni se miin an ngai sâng lo va, a rugin an nuihsan thin.

Ngun takin lo ngaithla teh u. Tun aţang hian in nungchang hi uluk ula. ʤhian sual lakah inthiar fihlimin, ruih theih thil eng mah ti chhin suh u. Inven dan ʤha ber chu vawi khat mah tih chhin loh hi a ni. A ching ʤhinte pawh kawm loh tur a ni.



Zirtirtu: Chutianga in tiha, Pathian in ʤih tlat chuan mi hlawhtling in ni ngei ang. Taihmâkna leh tumruhna in neiha, dik taka thil in tih zel ʤhin chuan Pathianin mal a sawm ngei ang che u.

Thu pawimawhte

khawtlang	hmingthat	tlawmngai
rinawm	duhâm	entawn
nuihsan	putling	theihtawp
hlawhtling		

TIH TURTE

- Heng thu hmang hian sentence siam rawh.
 - fing leh fel _____
 - rinawm leh dik _____
 - sual leh chimawm _____
 - entawn leh zawt ru _____
 - hlawhtling leh hausâ _____
 - duhâm leh hlemhle _____
- Mi hming tha ni turin eng ang mi nge nih ngai?
- Mawii te, Awma te leh Dika te khan an putlin huna nih an tum kha ziaak rawh.
- A hnuaia Mizo tawng dik lo apiang hi ziaak dik rawh.

Vawiin chu khua a lum hle mai a, ka tui in a hal huam huam a. Tui ka in hnem avangin chhun chaw pawh ka ei chak lo hial a. Tlai chaw ei hunah ka muthilh a chhuak em em a, ka muthlu lawp lawp mai a ni.

5. In zirlai buin ‘hlawhtlinna bul’ a tih kha eng nge ni?
6. Zirtirtuin Rinawma pa dikna leh rinawmna a sawi kha han ziak teh.
7. I ngaih san zawng leh ngaih san loh zawngte han ziak teh.

(a) Ka mi ngaih san zawngte:

(aw) Ka mi ngaih san loh zawngte:

9. A hnuaia thu hi mi pakhatin chhiar sela, mi dangin in lo ziak dawn nia.

“Mi hming tha ni thei tur chuan hausak a ni ngawt lo va, mi rinawm, mi dik, mi fel, dawt sawi ngai lo, thu dik chauh sawi thin mi an ni tur a ni. Mi rethei pawh ni sela, dik taka thil ti thin leh sawi thin chu miten an ngai sang thin. Mi hausawh ni se, duham leh dik lo taka sum la lut thinte hi mi hming tha an ni ngai lo.”

10. Zirlai hi ngun takin chhiar leh la, thumal a bula ‘hm’ awm zawng chhuak la, ziak rawh.

Entir nan: hmu.

11. Sentence panga emaw, a aia tam emaw pawhin phuah belh rawh le.

Arpa hi Mizo ran vulh a ni a. Ke pahnih a nei a, siak zum tak a nei bawk. Zingah a khuang thin _____

12. A hnuaia thumal bul lamah hian ‘in’ belh ula, a tawp lamah ‘na’ belh bawk ula, a awmzia hriat tum rawh u.

Entir nan: pumkhat – in+pumkhat+na

- (a) unau – _____
- (aw) sôm – _____
- (b) kawmngaih – _____
- (ch) hmangaih – _____
- (d) fiam – _____

13. Heng hi rang tak leh nâl takin chhiar teh.

Mizo naupangte hi khawvel hmun danga naupangte ang bawk kan ni. Pathian fa duh takte angin mi dangte kan hmangaih ang a, an chhiatna tur ni lovin an thatna turin kan thawk ang. Dik tak leh rinawm takin kan tih tur theuh kan ti ang a. Kawng dik leh thutak kan kawhhamuh ang a, hlim takin van thlen thlengin kan zai dial dial ang.

ZIRLAI 7

MI ROPUI

Hrawva



1. Pianna thu lam ka chhui lo,
Hming pawh hriat a ngai chuang lo;
Thinlung lam a dik phawt chuan,
Mi ropuiah ka ngai thin.
2. Hausakna ka ngaithla lo,
Rethei tê pawh ni mah se,
Mihring thinlung dik tak chu,
A neih chuan a tawk a ni.
3. Khawi atanga lo chhuak nge?
Khawii hmuna sei lian nge?
Tui pawh a thianghlim phawt chuan,
A chhuahna hriat a ngai lo.
4. Lal in nge ni hnam tlâwm in?
A chênna hriat a ngai lo;
Hei hi erawh min chhang teh,
Mi rinawm a ni em le?

Thu pawimawhte

pianna	chhui	ngaithla	thinlung
sei lian	thianghlim	chêna	tlâwm

TIH TURTE

1. He hla hi en lova sawi thei turin vawng rawh u. Group 4-ah inthen ula; chang khat tê têin in insawisiak dawn nia.
2. He hla phuahtu hian eng ang mi nge mi ropuia a ngaih?
3. Heng hmang hian thu (sentence) phuah rawh.
 - (a) dik _____
 - (aw) rethei _____
 - (b) sei lian _____
 - (ch) erawh _____
 - (d) tlâwm _____
4. Heng thu epte hi han dah teh.
 - (a) ropui _____
 - (aw) rinawm _____
 - (b) hausa _____
 - (ch) thianghlim _____
 - (d) hnam tlâwm _____
5. In zirtirtu hovin ‘Mi ropui’ leh ‘Mi rinawm’ in tihte sawi ho ula, in sawi apiang chu pakhatin blackboard-ah lo ziak se.

6. Heng zawhna hi i ngaih danin chhang teh.
- (a) Eng ang mi nge ropui i tih?
 - (aw) Mi hausa nge ropui i tih mi rinawm?
 - (b) Rilru thianghlim chu eng ang nge?
 - (ch) Engtin nge mi rethei leh hausate an intluk theih ang?
 - (d) Thinlung dik tak hi eng nge ni?

7. Heng thu hmang hian a âwl dah khat rawh.
hma, ṭanpui, rethei, rim, ngai sang, taima, zing takah, lo lamah, rinawm.

Dika chu mi _____ tak chhungkuaa mi a ni a. A nu leh paten an thihsan _____ avangin sikul pawh a kal thei ta lo va; naupang tēin an _____ a ramṭang lo thei ta lo a ni. Chuti chung pawhin Dika chu a _____ êm êm a, mi dangte _____ ngai nih a hlauh avangin _____ a tho va, hna a thawk _____ hle ṭhin. A hnathawh apiangah a _____ a; chuvangin, a hlawhtling zel ṭhin a ni. A rinawm êm ṭhin avangin a hmuingil a, mi dangte pawhin an _____ hle ṭhin.

8. Hla chang khat leh a thunawn han phuah ve teh u.
9. He thu hi han phuah chhonzawm teh.

Hmanlai hian lal ropui deuh pakhat a awm a, chu lal chu a khua leh tuite chungah a ngilneiin a ṭha êm êm a. A khua leh tuite pawhin an ngaina hle a ni, ṭum khat chu...

ZIRLAI 8

RAM NGAW

Vanneihluanga



Thing chanchin hi han ngaihtuah teh. A lian chi chu feet 300 aiin a sang thei a, a dam rei chi chu kum sang khat aia rei a dam thei a. Thing kung hian khaw lum a tinep a, kan boruak chhia min thlit fimsakin nun a tihlim bawk a ni. Thing buk pakhat chauh pawh hi nungcha tam tak chenna a ni thei. Sik leh sa inthlâk ang zelin thing kung chu a chângin a hnah a tla kawlh a, a chângin a hring dup a, a chângin a par vul chûk a, a rah tuar thei bawk. Heng bakah hian thing chu in sakna leh in chhung bungraw siam nan te kan hmang a. A ẵngkai êm avangin mihringte hian kan ngaina a, kan hlimna leh lunglenna siam theitu a ni.



Chutiang thing kung chi hrang tam tak awm khawmna hmun chu ram ngaw an ti. Ram ngaw hi “Ngaw” ti ringawta sawi pawh a dik tho. Ngaw ṭha chu leilung vawng daitu a ni a, nunna neite tan a hlu êm êm. Tui luang ral tur a vawng ṭha a, lui kama thing leh hnimte chuan lei min tur a vêng bawk a ni.

Ngaw ṭha awm theihna tura sik leh sa ṭha awmna Mizoram ang hi khawvelah a tam lo hle. Duat taka kan enkawl chuan khualzinten tlawh an châk ang a, kan ngaw hian malsawmna tam tak min pe ang.

Ram ngaw chu nungchate chenna a ni. Thing hnah, thing rah, a par zu leh a zungte chu nungchate chaw a ni a. Khâm leh pûk te, hnim pik leh thing zarte chu an hmêlmate laka an inhumhimna leh an chenna a ni a, ngaw hnuai thelh leh phulah te an tla a. Ngaw chhungah chuan nunna nei chi hrang hrangte inmamawh tawn chungin an cheng za dial dial ṭhin.

Ram ngaw hi damdawi chi hrang tam tak zawrhna dawr lian pui ang a ni. Hnim hnah bâkah, ngaw chhunga ramsate pawh hian kan damdawi mamawh min pe thei a.

Mahse, mihringin ram ngaw kan suat nasat avangin sik leh sa hun bi a buai a, khawvel hi a lum tual tual a, khaw khêng, thlipui, tui fâwn, tui lian leh lei min te kan tuar nasa tial tial a ni. Chuvangin, kan khawvel hi a chhe rup mai ang tih a lo hlauhawm ta hial a ni.

Hmanlai aṭangin Mizote hi ram ngawah a tiṭha tur ni lovin tichereu turin kan lut fo va. Ngaw aṭanga kan lo chhuah lehin, ram ngaw hausakna eng emaw tal kan la chhuak ṭhin bawk.



Tun thleng hian lo kan vâtin kan la hâl a, sava veh leh thang kam ching an la awm bawk. A pawizia miten an hriatna ramah chuan an sim a, ei zawna kawng dang an zawng ðhin.

Nunna nei chi tam tak chenna ngaw humhalh leh duat hi Pathian lawm zâwng a ni. Ram changkangah chuan thing kung pakhat an kihin a thlâkna tur thing dang an phun belh zel ðhin. Ngawa i kal chuan sairawkherh leh chem keng lovin, i thil hmuh ziahna tur note bu leh pen keng la, a theih chuan thlalâkna keng la, an chanchin zirin thlâ te la zawk ang che. Thil ðawih thei lo sarâng te ken luh pawhin ngaw chhungah paih mai lovin ken chhuah leh zel tur a ni. Lehkha thiam chuan ngaw hlutzia a hria a, vêng himtu a ni zawk ðhin. Kan ram ngawte hi kan in chhunga pangpar khawi mawi tak angh ngai ila, duat takin kan enkawl dawn nia.

Thu pawimawhte

thlit fimsak	humhalh	lunglenna
malsawmna	khaw khêng	chhe rup
inmamawh tawn	khâm	tichereu

TIH TURTE

1. Heng zawhnate hi chhang rawh.
 - (a) “Ram ngaw” tih ziaktu hian ram ngaw chu eng nen nge a tehkhin?
 - (aw) ‘Thing’ tângkaina i hriatte ziaak chhuak rawh.
 - (b) “Ram ngaw” tih hi han sawi fiah teh.
 - (ch) Ram ngawa kan kalin kan tih tur leh tih loh turte kha han ziaak teh.
2. Sik leh sa inthlâk avanga thing kung awm dan danglam thin kha han sawi teh.
3. Heng a hnuai mite hi Mizorama ramhmul damdawite an ni a, ngun takin zir ula, a dang in hriat apiang sawi ho nghal rawh u.
 - (a) aieng mît liam leh pumpui na tan
 - (aw) sarzûk chhûl chak lo tan
 - (b) sawhthing rannung tûr nei seha hnawihah
 - (ch) sekhûpthûr tai tha lo tan
 - (d) sumbul kal na damdawiah
 - (e) tawitaw ha tim tihreh nan
 - (f) theiherâwt thin lian leh mît liam atan
 - (g) tlangsam pem/pema thi tihreh nan

- (ng) phuihnam thisen sang atan
- (h) kawlthei zik kawthalo reh nan
- (i) behlawi mita hmarcha thak lutah, a tui sâwrin.

4. Ram ngaw a lo tlem tâk tial tial avanga thil thleng râpthlâk pui pui lo awm thinte in zirtirtu hovin sawi ho teh u. Mipuite tana hriat tur tul in tihte chu lehkha hlaiah ziak ula, tar rawh u.

5. Mizorama thing hming i hriat apiang ziak rawh.

6. Heng thu hmang hian sentence siam rawh.

- (a) hahdamthlâk _____
- (aw) inmamawh _____
- (b) tichereu _____
- (ch) sairawkherh _____
- (d) chhe rup _____
- (e) khaw khêng _____

7. A âwlahte hian dah khat rawh.

- (a) Ram ngaw chu _____ chenna a ni.
- (aw) Lehkha thiam chuan _____ hlutzia a hria.
- (b) Ngaw tha chu _____ vawng daitu a ni.
- (ch) Ram ngaw _____ nasat avangin sik leh sa hun bi a buai.

8. Ram phûla thing chi hrang hrang phun lem ziak rawh.

ZIRLAI 9

RALDAWNA LEH TUMCHHINGI



Hmanlai hian khaw pakhatah hian tlangval hmel tha tak Râldâwna hi a awm a. Vawi khat chu a nu nen huan an thlo va, vani-an rah hmin sen têt hi a lo awm a. Râldâwna chuan mawi a ti êm êm a, “Ka nu, he vani-an rah anga mawi nula hmel tha hi an awm ang em?” a ti a. A nu chuan, “Awm e, khu lai khuaah khuan Tumchhingi a awm,” a ti a. Râldâwna chuan, “Zawng turin ka kal dawn e,” a ti a. A nu chuan, “Zawng ta che,” a ti a, a kal ta a.

In tha tak pakhat hi a zuk hmu a; mahse, Tumchhingi te in a lo nih loh avangin a kalsan leh ta a. In dang a hmuh apiang chu a en zel a; nimahsela, Tumchhingi-te in chu a la ni lo fo va.

A tawp a tawpah chuan Tumchhingi-te in chu a thleng ta a. Tumchhingi chuan puan a lo tah dap dap a, darkhuang a thutphah a, silai a lo tlawhchhan a. “Eng nge i duh le?” a lo ti a. Râldâwna chuan a nu nena vani-an rah sen têt ang maia nula hmel tha leh duhawm, Tumchhingi zawng a nih thu a hrilh a. Tumchhingi chuan, “Kei mi duh i nih chuan ka nu leh ka pa hrilh ta che,” a ti a. Râldâwna chuan a nu leh pa hnenah chuan Tumchhingi chu nupui atan a dil ta a, an lo remti a.

Tumchhingi leh Râldâwna chu an innei ta a. Tumchhingi chuan a bungrua zawng zawng a keng a, Râldâwna-te khaw lam pan chuan an kal ta a. Thui tak an kal hnu chuan Tumchhingi chuan, “Râldâwn, ka bungrua zawng zawng ka keng

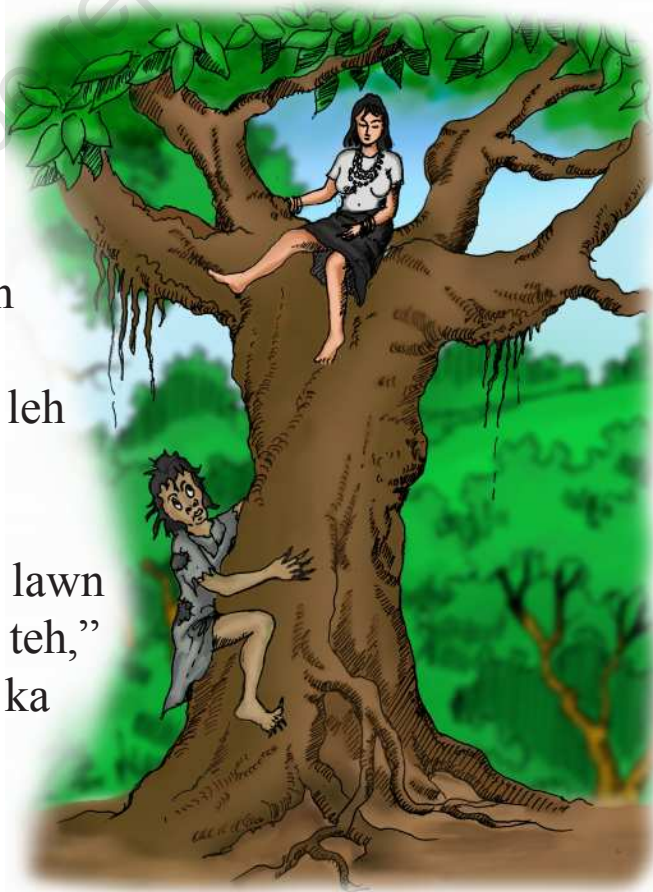
kim emaw ka ti a, ka dâr samkhuih ka theihngilh alawm le,” a ti a. Râldâwna chuan, “A nih leh hmâwng lêrah khian ka dah ang chia, ka va kir leh ang e,” a ti a. Tumchhingi chu hmâwng lêrah chuan a dah a, a kir leh ta vang vang a.

Rei lo têah chuan Tumchhingi awmna hmâwng bulah chuan Phûngpuinu hian fangra a rawn chil soh soh va. Thing lêra Tumchhingi thlâ chu leiah a hmu a, ama thlâ emaw a ti a, mawi a ti êm êm mai a:

*“Ka takin eng châwi lovin,
Ka thlâin ngûn bun chhing chheng,
Thi awrh chhing chheng”* a ti a, a su leh soh soh thîn a.

Tumchhingi chuan thing lêr aţang chuan a en reng a. Nakinah chuan, “Phûngpuinu, keima thlâ a nih kha,” a zu ti a. Phûngpuinuin a han hmuh chuan, “Tumchhing, engtin nge i lawn theih?” a ti a. Tumchhingi chuan, “A zangthalin ka lawn mai,” a ti a. A zangthal chuan a han lawn dawn chiam thîn a, a lawn thei si lo va, a tla thûm leh dum thîn a.

“Engtin nge maw i lawn theih tak tak le, min han hrilh teh,” a ti a. Ani chuan, “A saisirin ka lawn mai,” a ti leh a. Phûngpuinu chuan a saisira lawn chu a tum leh a; nimahsela,



a thei chuang lo va. A lawn dan a zâwt leh a, Tumchhingi chuan a hrilh ta tak tak a, Phûngpuinu chu a lawn thei ta a.

Tumchhingi hnenah chuan, “I puan kha ka lo sin hawh ang e,” a ti a, a sin hawhtir a. A kawr te, a bânbun te, a thi te, a incheina zawng zawng chuan Phûngpuinu chu a inchei a. Tumchhingi chu a dawlh ta daih mai a.

Nakinah chuan Râldâwna chu a lo haw ta a. Hmâwng lêra a nupui awm chu a han en a. Tumchhingi kha ang lo a ti êm êm a. “Tumchhing, i kutte chu a va zum ta sêl sêl ve?” a ti a. Phûngpuinu chuan, “Sâwtah sâwn Râldâwna a lo haw dawn ka ti a, ka kawh nan che a zum zo ta a nih hi,” a ti a. “Tumchhing, i mitte chu a va tung ta ve?” a ti leh a. “Sâwtah sâwn Râldâwna a lo kal dawn ka ti a, ka thlir nan che a tung zo ta vek a nih hi,” a ti leh a. Râldâwna chuan Phûngpuinu chu a chhawm hâwng ta a.

Mite chuan, “Râldâwnan nula hmel tha tak Tumchhingi a rawn hawn dawn e,” an ti a, an lo hmuak huai huai mai a. Kalkawng te an lo phiat fai a, an puan te an lo phah hlawm a. Phûngpuinu an hmuh veleh chuan, “E khai, Phûngpuinu kal nan chuan ka puan ka phal lo,” an ti a, an la leh ta vek a. Râldâwna chuan zak takin Phûngpuinu chu a hruai lut ta a.

Phûngpuinu chu daiah a va kal a, a luak t̄euh va, Tumchhingi kha a law chhuak tel ta a. Tumchhingi chu theihaiah a lo ʈo va, a rah duh êm êm mai a, miten a rah tla chu an chhar sup sup ʈin a. Nimahsela, Râldâwnan a va zawn ve chuan a rah chhe ber pakhat chauh hi a va hmu a, inah a hawn a, “Ei tlâk pawh a nih niau loh hi,” a ti a, ditipah a zep ta mai a.

Ni tin hian Râldâwna leh Phûngpuinu chu an feh thin a. An feh hlan apiang hian ditipa theihai chu a zuang thla a, an chaw te a lo chhumsak diam a, rawng a bawl zawh veleh chuan theihai a chang leh a, ditipah a inzep leh diam thin a. Râldâwna chuan a thenawm zawng zawngte a zâwt a, tu man a titu an hre si lo va. A tawpah chuan Phûngpuinu feh hlânin a châng ru ta a.

Tlai lam a lo nih chuan Tumchhingi chu a dan pangngaiin a zuang thla leh chhak a. Chu veleh Râldâwna chuan a pawm ta châwih a, a lawm êm êm mai a. Tumchhingi chuan, “Min thlah rawh, theihai a ka chang leh ang e,” a ti a. Mahse, Râldâwna chuan a thlah phal lo va.



Phûngpuinu feh chu a lo hâwnng a, “Râldâwn, kawng mi va hawn rawh,” a ti a. Ani chuan a hawn duh lo va. Phûngpuinu chuan kawngkhar chu a bawh thla a, thinur takin a lut a. Tumchhingi a hmuh pheih chuan a thinur leh zual sauh va.

Râldâwna chuan Tumchhingi leh Phûngpuinu chu a insualtir dawn ta a. Tumchhingi chu chem hriam tak a pe a. Phungpuinu erawh chu khawmhma chem bil tak a pe thung a. Phûngpuinu chuan a han sât hmasa a, Tumchhingi chu pem pawh a pem eih lo va. Tumchhingi chuan a chem hriam tak chuan a han sât ve a, Phûngpuinu chu a sât hlum ta der mai a. Tichuan, Tumchhingi leh Râldâwna chu hlim takin an awm dun ta a ni.

Thu pawimawhte

vani-an	sairawkherh	ṭhutphah	bungrua
fangra	zangthal	saisir	dawlh
chhawm	ditip	ṭhenawm	thung
insualtir	khawmhma		

TIH TURTE

1. Tumchhingi kha eng anga hmel ṭha nge? Tuin nge zawng?
2. He thawnthu aṭang hian double adverb-te zawng chhuak rawh:
Entir nan: êm êm
3. Phûngpuinu hla sak kha mawi takin ziak la, vawng nghal ang che.

4. Kualkhung chhunga ṭawngkam dik zawk hi thlang chhuak rawh.

- (a) a thim (a êng/a var)
- (aw) a kawî (a ngil/a kawî)
- (b) a kûl (a tai/a mar)
- (ch) a thlum (a al/a khâ)
- (d) a dik (a dik lo/a dawk)
- (e) a tar (a zûr/a naupang)

5. Heng thute hi in zirlai bu-a thu angin ziah zawm rawh.

- (a) A tawp a tawpah chuan _____
- (aw) Min thlah rawh _____
- (b) A kawr te, _____
- (ch) Phûngpuinu chuan kawngkhar _____
- (d) Tumchhingi chu pem pawh a pem _____

6. Heng thute hi a awmzia ziaik rawh u.

- (a) ditip _____
- (aw) dâr samkhuih _____
- (b) fangra _____
- (ch) chhawm _____
- (d) bawh thla _____
- (e) khawmhma chem _____

7. Heng thu modified form hmang hian thu puah rawh.

- (a) hmuak - hmuah _____

- (aw) sât - sah _____

- (b) remti - remtih _____

(ch) zep - zeh _____

(d) hmu - hmuh _____

8. A hnuaia thu hi tidik rawh.

(a) Râldâwna leh a nu chuan huan a vat a.

(aw) Tumchhingi chuan puan a lo thui a.

(b) Tumchhingi thlâ chu tuiah a hmu a.

(ch) I puan kha ka lo bik hawh ang e.

(d) Min thlah rawh, theihaiah ka ni ang e.

(e) Phûngpuinu chu a chêk hlum ta der mai a.

(f) Ei tlâk pawh a nih hauh loh hi.

9. Tu sawi nge?

(a) “He vani-an rah anga mawi nula hmel tha hi an awm ang em?”

(aw) “E khai! Phûngpuinu kal nan chuan ka puan ka phal lo.”

(b) “I puan kha ka lo sin hawh ang e.”

(ch) “Zawng turin ka kal dawn e.”

(d) “Min thlah rawh, theihaiah ka chang leh ang e.”

10. **Thawnthu phuah ve ila:** He thawnthu hi tha i tih angin han chhunzawm teh.

Hmanlai hian khaw pakhatah hian tlangvâl inkawm ngeih tak pahnih hi an awm a. Pakhat chu an khaw lal fapa a ni a, pakhat zawk erawh chu hmeithai rethei tak fapa a ni thung a...

ZIRLAI 10

KA HLU A NI



Ni khat chu ka inbual fai a. Ka kawr hâk turte chu ka la chhuak a, han hâk mai ka tum a, a fai vak loh bâkah a lo chuar bawk si nen, ka lungawi lo hle a. Darthlalanga ka han inen chu induh tawk lohnain ka khat a. Ka sam awm dan te, ka hmel te, ka taksa te chu a chuti deuh, a khati deuh, ka nalh lo si tiin sawisel tur ka ngah ta hle mai a. Nangni chutiang ni chu in nei ve ðhin em?



Tih tur: Han ziak chhuak teh.

Nangmaha ðha i tihte	ðha lo i tihte

Chutia ka induh tawk lohna lai sawia ka phun ka phun lai chuan ka u Lawma chuan, “I hmaiah khan eng lai kha nge i duh loh deuh ber a?” a ti a. Kei chuan, “Ka hnâr hi a nalh lo, a bawng si, ka hnâr hi ka duh lo khawp mai,” ka ti a. “A nih leh i taksa lamah eng nge i sawisel deuh ber a?” a ti leh a. Kei chuan, “Ka châwn hi a lian si, a sek si, ka taksa dang nen pawh a inphû lo,” ka ti a.

Ka u Lawma chu a nui huk a. “A nih leh i hnâr chu hlep thla ila, paih daih ila a ni mai alawm, hnâr nei lovin i awm ang a, i hnâr awmna lai chu a kaw huau dawn a, i duh meuh ang maw? I châwn te pawh chu hlep thla then ila, i kal bai uih uih mai dawn a ni. A sek, a lian, a inphu lo i ti bawk si a, hlep thla then mai ila i thlang zawk meuh maw?” a ti a.

Ka inngaihtuah nasa ta hle mai.

Group-ah inthen ula, sawi ho rawh u-

Taksa bung hrang hrangte chu group tinin chan insemin an tangkainate sawi tur.

Ka u Lawma chuan, “Pathianin mihringte hi duh taka a siam kan ni vek asin. Inang chiahin tu mah a siam lo thung. Khawvela mi zawng zawng hi tu mah inang kan awm lo va, phir pawh an inang vek chuang lo. Pathianin tha ti taka a siam vek kan ni a. Kan hlu êm êm asin,” a ti zui leh a.

Kei pawh chu ka inngaihtuah chiang ta a. Eng nge ka hlutna tiin ka inchnhât vel a. Mi dangte aia danglamna, theihna bik ka lo nei ve nual mai. Ka mitin thil ka hmu fiah ṭha thei hle a, ka sambu pawh a chhah ṭha khawp mai. Ka hmui a nalh a, ka bân tha lah chu a chak ṭha hle bawk. Ka châwn ka duh vak lohte pawh chu a chak ṭhain bazar-ah te, sikulah te, biak inah te min kalpui thei bawk si ka ti rilru a.

Pathian hian danglam bikna leh theihna bik riau neiin min siam a, ka tum phawt chuan engkim ti thei turin min lo duang reng mai a lo ni. Chu vang chuan thu tlukna ka siam ta a. Ka taksa ka duat dan tur chu ka rilruin ka suangtuah ta a ni.

Group-ah inṭhen ula—in taksa in duat/enkawl dan tur ziaak rawh u.

1. Intihfai kawngah:

2. Taksa sawizawi kawngah:

Ka u Lawma chu ka taksa ka duat dan tur chu ka hrilh ve bawk a. Ani chuan, “Ṭhang lai in ni a, intihfai uluk a ngai a nia, in taksa kilkhawr ber thlengin tihfai ṭhin tur a ni,” a lo ti ve a. “A kilkhawr ber thleng tih kher chu eng nge a awmzia?”

tiin ka zawt a. Ani chuan, “E le, zak hnuai te, beng chhung te, kapkar te hi maw le. Inthiar zawhah pawh uluk taka insil fai ziah tur a ni. I zun leh i ek zawh apiangin kut sil ngei ngei bawk ang che. Chutianga i tih chuan, i inenkawl tha hle a ni ang. Pathianin duh taka a siam i taksa chu i ngai hluin i duat tihna a lo ni ang,” a ti a. Kei chuan, “A ni tak maw, kei lo chu ti tur dang an awm chuang rêng rêng hlei nem, tu man min tihsak hauh lo vang,” ka ti rilru a. Ka taksa ka enkawl dan tur chu ziaikin ka chhinchhiah ta a.

Tih tur:

1. Taksa tana thil hrisel lote sawi a, taksa tana a pawina chhan sawi tel tur.

Ka u Lawma chuan ka thil ziah lai chu a rawn en ve a, “Kha i ziaik tha khawp alawm. Zûk leh hmuamte hi chin dawklak a awl a, taksa tan thatna pakhat mah a awm si lo va, ti chhin lo ila, a him ber. Kan tih chhin loh tlat chuan kan châk lo mai alawm. Hengte hi ti duh miah lo ila, hriselna leh dam reina a ni mai,” a ti a.

Chutih lai tak chuan ka thiannuin min rawn sawm a. “Rinpui, inkawm ang. Chhun thingpui i in zawh tawh chuan lo leng rawh. Ka putean thil a rawn hawn a, ‘Rinpuii va sawm rawh, ka lo pe ang che u,’ a ti,” a ti a. Mahse, eng emaw ka ngaihtuah chhuak a, ka thiannute ina len chu ka hreh deuh tlat a ni. Taksa

induata inenkawl that tur tih te leh mahni inven him tur tih te ka rilrua ka vei thar lai a ni bawk nen. A hnenah chuan, “Ka lo leng lo mai ang, i putea a awm phei chuan ka duh lo, kut thawha min fiam thin dan hi ka duh lo tlat,” ka ti a. Ka thiannu chu a ngawi rauh rauh va, a haw ta a. Ka rilru chuan ka taksa te pawh hi ka duh lo chung emaw, ka duh loh dan riauvin emaw tu mahin an khawih thiang lo. Ka taksa a ni a, ka thu a ni a, ka ven him theih dan danin ka veng tur a ni ka ti a. Ka thiannute inah chuan ka leng duh ta lo va. Hemi chungchang hi kan zirtirtute emaw, mi dang min tanpui thei turte emaw hnenah ka la sawi chhuak ang tiin huaisenna rilru nen thu tlukna ka siam ta a ni.

Sawi ho tur.

- I duh lo chung emaw, i duh loh dan riau emawa khawihtu che i tawng tawh em? Sawi ho rawh u.
- Chutiang chu tawng ta ula, engtin nge hma in lâk ang?
- Tanpuitu tur emaw, hrilh tur dang/zualkona tur emaw in zirtirtute nen zawng chhuak rawh u.

Tih tur.

“Duh taka Pathian siam ka ni a, ka hlu a ni.” Hei hi chart paper-ah nalh takin ziak ula, in classroom bangah tar ang che u. Sawi rual fo bawh ang che u.

ZIRLAI 11

THUFING



Ka fapa, ka dan chu theihnghilh suh la,
I thinlungin ka thupêkte chu zâwm reng zawk rawh se;

Dam ni leh kum te,
Thlamuanna te a pek belhchhahsak dawn che nia.

Khawngaihna leh thutak chuan hnuchhawn che suh se,
I nghâwngah zem tlat la,
I thinlung phekah ziaak rawh.

Tichuan, Pathian leh mihring mit hmuhah
Duhsakna leh hmingthatna i hlawh dawn nia.

I thinlung zawng zawngin LALPA ring la,
Nangma hriatnaah inngat suh.

I kawng zawng zawngah amah hre reng la,
I kawngte chu a kawhmmuh zel ang che.

Mahni ngaihin intifing suh la;
LALPA chu ÷ih la, sual kalsan rawh.

I lai atan hriselna a ni ang a,
I ruh atan thlîng a ni ang.

I sumin LALPA chawimawi la,
I thil lo pung hmasa ber zawng zawngte nen;

Tichuan, i buh in chu a lo khat liam ang a,
I sâwr khur uain tharin a luang liam ang.

Ka fapa, LALPA thununna che ngai nêp suh la,
A zilhhauna che ning hek suh.

LALPA chuan a hmangaihte chu a zilhhau thin a ni,
Pain fa a lawm apiangte a zilhhau thin ang hian.

Finna hmu chhuaktu chu a nihlawh a,
Hriat thiamna hmu chhuaktu pawh.

Tangkaraw peipun aiin a peipun chu a tha zawk si a.
A hlêp pawh rangkachak tha mi aiin.

Lunghlu sen mi aiin a hlu a;
Thil i duhthusam theih ang zawng zawng pawhin a hen lo.

A kut ding lamah dam reina a awm a,
A kut vei lamah sum leh ropuina.

A kawngte chu nunkhaw nawmna kawng a ni a,
A kawng zawng zawng chu thlamuanna a ni.

A vuan apiangte tan nunna thing a ni a,
A kawl reng apiangte chu an hamtha e.

Thu pawimawhte

theihngihl	thlamuanna	hnuchhawn
intifing	sâwr khur	hmingthatna
thununna	zilhhauna	duhthusam
hamthatna	nunkhaw nawmna	

TIH TURTE

1. Heng zawhnate hi chhang teh.
 - (a) Dan zawm chu eng nge a thatna?
 - (aw) Tute nge nihlawh?
 - (b) Lalpan tute nge a zilhhau thin?
 - (ch) Engtin nge Lalpa chawimawi tur?
 - (d) Lalpa tiha sual kalsan hlawkna eng nge?

2. Heng thumal hmang hian thu han phuah teh.

thlamuan : _____

duhthusam : _____

hnuchhawn : _____

zilhhau : _____

thunun : _____

3. A âwl laiah dah dik rawh.
- (a) Mahni ngaihin _____ suh la.
- (aw) Nangma _____ innghat suh.
- (b) A kut ding lamah _____ a awm a.
- (ch) A _____ zawng zawng chu thlamuan a ni.
- (d) A zilhhauna che _____ hek suh.

4. Heng thute hi a mil ber nen thai zawm rawh.
- | | |
|------------|-------------------|
| theihngilh | lainatna nena en |
| khawngaih | tam deuh deuh |
| thlamuang | hre leh tawh lo |
| nihlawh | dah belh leh teuh |
| ngai nêp | hlauhna nei lo |
| belhchhah | vannei tak zet |
| pung | ngai sang lo |

5. Heng thute hi hrilh fiah rawh.
- dam ni leh kum
- luang liam
- thinlung phêk
- zem tlat
- hen lo

6. He Thufing hi en lova sawi thei turin vawng rawh.

7. Mizo tawng ziah dan dikin ziak rawh.
- (a) A zilhhauna che ning hek suh.
- (aw) A kutvei lamah sum leh ropuina.
- (b) A kawl reng apiangte chu an ham tha e.
- (ch) Lalpa tih la, sual kalsan rawh.
- (d) I buh in chu a lo khat liam ang.

ZIRLAI 12

PAR MAWI THANG VULNA

Liandala



1. Kan tlang ram par vulna,
Ṭhâl khua êng riai romei karah;
Lenkâwl turni nê̄m duai,
Zai tin rimawi an chiar nghian e.



Phunchawng, naubân, ainâwn par,
Ṭuah, vâu, chhawkhlei, senhri par,
Chawnpui, pâng, sâm tlang, dingdi,
Par mawi thang vulna Zoram hmun zauvah.

2. Fan changin tlang liante,
Lunglê̄ng kan uai par zûn lê̄ngah;
Chhuahtlang lam tluang zawng leh,
Thing tin rihnim parin a bawm.





3. Chhaktiangan par an vul,
Chhawklei, ainâwn, chawngtlâi, hawilo;
Phunchawngpui phâi bawmtu,
Thingsir leh mualhawih, chawnpui par.

4. Thinlai hnêm par lâwmna-
Zozâm, chuailo, derhken, ârkhuan;
Chin par mawi thang vulna,
Ram bûkthlâm leh rûn in sumtual.



Thu pawimawhte

romei	lenkâwl	chiar nghian	zûn lêng
lamtluang	rihnim	chhuahtlang	thinlai
hnêm	chin par	bûkthlâm	sumtual

TIH TURTE

1. He hlaa Zoram pangpar hrang hrangte kha ziak chhuak la,
bel taka thiam tum baw k rawh.
2. Heng hla thute hi Mizo ÷awng tluangt lamin dah la, chumi
hmang chuan thu phuah baw k ang che.

(a)	lenkâwl	_____	_____
(aw)	chhuahtlang	_____	_____
(b)	chhaktiang	_____	_____

- (ch) bûkthlâm _____
 (d) sumtual _____

3. A kar âwl dah khat rawh.

- (a) T̄hal khua eng ri ai _____ karah hian,
 _____ len a zual mang e. T̄uah, vau, _____,
 senhri p̄âr vulte n̄ên.
 (aw) Thingsir leh _____, chawnpui parte hian
 ram _____ leh r̄ûn in sumtual an mawi.
 (b) Chhuahtlang _____ zawng leh thing tin
 _____ parin a bawm ramah hian nang leh kei
 lung lawmin kan leng.

4. Heng hmanh hian thu (sentence) phuah rawh.

- (a) tlang (aw) thing (b) pangpar
 (ch) zai thiam (d) romei (e) thlâm

5. He hlaa pangpar hming lang lo, pangpar hming i hriat apiang
 ziaak chhuak la, an rawng hming sawi la, a hnah awm dan
 i hriat apiangte chu sawi baw k ang che.

6. In hla zir chang 3-na en la. Heng pangparte zingah hian
 khawchhak lama awm chi han thlang chhuak teh.
*zozâm, chawngtlâi, ârkhuan, chhawkhlei, chawnpui,
 naubân, phunchawng, dingdi, vâu.*

7. Tlar **A**-a mi leh tlar **B**-a mite a inmil zawng la, heng thu hmang hian sentence khat theuh bawm chhungah hian han ziak teh.

A	B
rûn in	ni
tur ni	rilru
thinlai	in

8. **Project.**

In sikul leh in in bul hnaia pangpar in hmuh apiang zir Chiang rawh u. A neitute hnenah a hming zâwt ula, a chin hun te, a par hun te zawt bawk rawh u. In note buah in chhinchhiah dawn nia. Tichuan, a neitute phalna lain a hnah pakhat leh a par pakhat in la ang a, in scrap buah in dah dawn nia. Chutah chuan a hming leh a chanchin chu ziak ula, sikulah keng khawm rawh u.

Pangpar chanchin	Zir ni
A hming :	_____
A chin hun :	_____
A par hun :	_____
A mawi dan :	_____

ZIRLAI 13

ZING MAK TAK CHU



Tuk khat chu tui êm êma ka mut lai hian thâwm ring deuh mai hian minrawn tiharh zawk mai a, hlauthawng êm êmin ka bân chu ka vai ta buan buan a. Ka'n harh chian meuh chuan, chhuat châra lu vaw ri thuai khawpin khum aṅang chuan ka lo tla thla pek hi a lo ni a. Tu man min hmu lo mah se ka zak ru chem chem tho nia. Tichuan, hmanhmawh takin ka tho thuai a, exercise la turin ka insiam sawk sawk a, nuihza ru angreng tak chuan ka chhuak ta a.

Thui pawh ka la kal hman lo, thâwm eng emaw hi ka hria a, eng nge a nih ka hre mai thei lo. Fimkhur takin ka kal pheizel a, mipa naupang pakhat hian an in bul ko panga hnim chu tihfai tumin a chemkawmin a lo ziat ri hreih hreih hi a lo ni a. A bul lawkah chuan hmeichhe naupang pakhat hian an tual laia bawlhhlawh awmte chu a lo phiat khawm ve mêk bawka. Ka hriat chian hmaa ka hlauthawn ruk tehreng nen, an tih theih tawk hreh miah lova tih nachang hria naupangte khan min va tilawm teh lul êm. Naupang thu awih thei tak an nih dawn hi ti rilru chung chuan ka kal ta zel a.

Kawng chho deuh euh euhva kal ka ni bawka, ka thlan a tla chu a ni deuh der mai. Ka rawmawl ka phawrh a, ka hmai chu ka hru thwak thwak a. “Pêt rawh, bum la, bin ta che, pêt pawp tur alawm,” tia au ri tuar tuar ka hre zui ta mai a; intibuai an awm ta mai emaw tiin ka kal ta sawk sawk a; mahse, intibuai rêng rêng ka hmu lo. Veng chhak khelmuala naupang football khelho au

thawm chu lo niin; exam chawlh lai te a ni bawk a, an thahnem hle lehngal. Khelmual kotlangah chuan din hahchawlh pahin naupang infiam chu ka thlir zui a, ball boot bun leh ke lawnga khelte thahnemngaih dan inang reng mai chuan min tihlim ta zawk phian a.

Kal leh mai ka tum lai chuan, mipa naupang pakhat hi hmanhmawh takin a lo tlan chho hlawk hlawk a, ûmtu an awm a nih ngei dawn hi tia lo chhan tum nakalaiin, “Ka pu, hei i pawisa i thlah va,” tih pahin cheng zanga note hi a rawn lek lang ta va va a, chu veleh ka kekawr ipte ding lam chu ka dap nghal vat a, veng thlang bazara chawhmeh leina tur tia ka ah chhuah chu, ka ipte atanga rawmawl ka phawrh rual khan a lo tla chhuak daih a ni tih reng ka hre lo. Naupang tê ni si, a thil chhar neih mai tum lova, a neitu pek leh duhna a neih avang chuan lawm avangin ka hnuk a ulh hial a, rinawm ka va ti teh lul em! A thil tih avanga lawm hmel tak hian a tlan haw leh ta nal nal a.



Ni a lo chhuak suar suar tawh a, veng thlang lam pan chuan ka kal leh ta a, kawng sir zawl zau deuh laia naupang infiam ri chêl chûl kara thianho hlim taka titi bawrh bawrh paha insu thawm chu ka han hria a, an zinga pakhat chuan, “Thawmhawa aieng leh mawm a kai chuan, toothpaste hnawih ula, in sùk hmain darkar hnih vel in chiah hmasa ang a; tichuan, in su fai mai dawn alawm,” a lo ti lâwng lâwng a. An thiannu pakhat ve thung chuan nui ar ar chungin, “Buara hruia nghet deuhva thil tawn in duh chuan hrui kha tihuh hmasa ula; fanghmir tihrêm in duh leh, an lo kalnaah khan aieng phul thet thet ula, an rêm duak mai ang,” a lo ti ve bawk a. An thil sawi chuan ka beng a verh hle a, hmangchang an hria ka ti hle mai.

Tichuan, veng thlang bazar chu ka thleng thla ta a. A sir bera thu chawhmeh zawrh chu cheng za man ka leisak a, a man ka pek lai chuan a bula a fanu hmeichhe naupang kum sawm bawr vel âwm mi hian, “Cheng zali kir tur,” zawi sap hian a rawn ti reuh va. Chu veleh rang fahranin, “Engtin nge i hriat?” ka ti thuai a. Ani chuan, “Belh leh paih kan zir daih tawh alawm,” a lo ti sam êt a. Mahni zirlai a tak taka hman nachang hria naupang eng zat tak awm ang maw ti rilru chungin kan in lam pan chuan ka kalsan ta a.



Ka hâwn kawnga khawnvartui la tur naupang lo intlar ɬap te, an zawh tawk bur kenga, tui lo khai ɬang ɬang naupangte chuan ka rilru chhungril an luah a, min va tihlim hlawm teh lul êm. Khang naupangho zawng zawng khan anmahni bâkah an chhungte thlengin an chawimawi a ni.

In ka thlen meuh chuan ni pawh a lo tlangsang ta hle mai a, bathlarah ɬut hahdam paha thingpui no dawm vang vang chungin, zing kar hun ka hman dan leh ka thil tawn inang lo tak takte chu ka ngaihtuah lêt neuh neuh va. Kan khawtlang fai ta êm êm mai te leh kan ran vulh enkawltu nei lo ang maia chhuak sup sup ɬin hmuh tur awm ta lo te chuan ka rilru a tilawm tak zet a ni. Hetiang rêng rênga zing hlimawm leh manhla hi ka tawng leh ang em tiin ka inngaituah a, zing mak tak chu a va ni em!

Thu pawimawhte

thâwm
ti rilru

fimkhur
hnuk ulh

hmangchang
nachang

thu awih
chawimawi

TIH TURTE

1. Heng zawhnate hi chhang rawh.
 - (a) Naupang fel ni turin engte nge tih ngaia i hriat?
 - (aw) In lamah eng hna nge i thawh thin?
 - (b) Zing dar eng zatah nge i thawh thin? Zing kar hun i hman dan indawt ziak chhuak la, sikul i ban hnuah eng nge i tih thin ziak bawh rawh.

2. A âwlahte hian dah khat rawh.
 - (a) Mipa naupang pakhat hian an in bul ko panga _____ chu tihfai tumin a _____ chuan a lo ziat a.
 - (aw) A neitu _____ leh duhna a neih avang chuan lawm avangin ka _____ a ulh hial a.
 - (b) Kan khawtlang _____ ta êm êm mai te leh kan _____ enkawltu nei lo ang maia chhuak _____ thin hmuh tur awm ta lo te chuan ka rilru a _____ tak zet a ni.

3. A hnuaiia thu hi Mizo tawng ziah dan dik takin ziak tha rawh.

khawvelah hian mi hang te mi ngo te mi eng te kan awm a kan vaiin pathianin duh taka a siam mihring kan ni vek a kan intluk tlang vek a tumah ropui bik leh ngaihnep tur bik kan awm lo. Thil tha kan ti thei vek a tu pawh mi taima leh huaisen, theihtawp chhuaha hna thawk apiangte chu an hlawhtling thei vek

4. Heng thu hmang hian sentence siam rawh.
manhla fimkhur thu awih chawimawi

5. A hnuaiia thu awm hi nalh takin ziaak chhuak rawh.
Bawlhhlawh a bawmah ka paih thin ang. Ka taksa fai taka enkawlin, dikna leh rinawmna nunpuitu nih zel ka tum ang.
6. **Sawi ho tur.**
 Chhungte chawimawina tha ber ni-a in hriat sawi ho ula, chung in sawite chu ziaakin chhinchhiah ang che u.
7. **Project.**
 In zirlai buin hmangchang a sawi ang chi thil dang zawng chhuak la, ziaak ve rawh.

Sl. No.	Harsatna	Hmangchang
1.	Fanghmir tam lutuk	An lo kalnaah aieng phul thet thet

ZIRLAI 14



TAWNG UPA

- a thlum a al ei za** : Thil ti hova ei ho thín.
Entir nan: *Mawiate chhung nên hi chuan a thlum a al ei za kan ni, kan intichhung khawp asin.*
- aite chhin** : Ti chhin, ti tak tak rih lo.
Entir nan: *Kan tih tak tak hmain ka 'n aite chhin phawt ang e.*
- ar chil zat** : Tui lam chi tlêm tê sawina
Entir nan: *I tui min suah chu a va tlem ve, âr chil zât lek alawm.*
- arpa chan lai** : Chak zâwk emaw chan ða zâwk emaw chan lai.
Entir nan: *Kan infiamnaah ka ðhianpa chu a arpa chan lai takin a bâng.*
- arte lu kâwn** : Chân vek, hlawhchham fai vek.
Entir nan: *Exam result an puang a, sikul ðhenkhat chu an arte lu kâwn dêr mai.*
- be chhawhchhi** : Be nawmnaah, thu taka be lo.
Entir nan: *Piangsualte be chhawhchhi suh.*

- chil chhâk phâk** : Hmun hnai tê sawina (chil chhâk phâk tak taka hnai tihna êm chu a ni lo; tlema hmun hla deuh sawina pawh a ni.)
Entir nan: *Kan huan chu chil chhâk phâk lek a ni.*
- ha chang thial** : Thinrim taka insehruh.
Entir nan: *Kan thenawmpa chu a thin a rim hle a ni ang, a ha chang a thial bap bap mai.*
- khawfing chah lai** : Khawvar dawn lai hian thim zual bik lai a awm a, chumi lo êng leh tan chiah chu khawfing chat an ti; zing khawvar tih tê sawina a ni.
Entir nan: *Khawfing chah lai vêl khân sihal an û chuah chuah mai.*
- kel chawl ang** : Thial nei reng.
Entir nan: *Mi thenkhat chu kel chawl ang mai an ni, thil an thial reng mai.*
- kâwla ni chhuak chhiar** : Tûk tin emaw, ni tin emaw tihna.
Entir nan: *Ka nu chu kâwla ni chhuak chhiarin a feh thin.*
- nau ril tam** : Tûkthuan ei kham hnu si, chawfâk hun hma.
Entir nan: *Kan zing ram kal chu kan haw tlai khawp mai, nau ril tam vêlah kan haw.*

- ni la vûi zo lo** : Naupang, nilênga muhil lova la awm thei lo sawina.
Entir nan: *Liana zawng a la naupang deuh va, ni a la vûi zo lo a ni, tlai lamah a mu ziah mai.*
- rila rah** : Mahni fa hrinte.
Entir nan: *Rila rah fanaute hi kan ro hlu an ni.*
- tual châi rual** : Naupang fel tawh tak, tual laia pawnto rual sawina a ni.
Entir nan: *Kan vêngah chuan naupang tual châi rual an tam khawp mai.*

TIH TURTE

1. A âwl lai hi tawng upain dah khat rawh.
Khaw pakhtah hian chhungkaw hung deuh mai hi an awm a. _____ fanau pawh tih tham tak an nei a. A naupang ber _____ a lo nih chuan an pem ta a. An khaw hlui chu _____ lek ni mah se, an chhangchhiat êm avangin an zin thei chuang lo.

2. Ṭawng upa in zir aṭang hian hun lam sawina leh naupang sawina han thliar hrang teh.

HUN SAWINA

NAUPANG SAWINA

3. Heng ṭawng upa hmang hian sentence siam rawh.
- (a) chil chhâk phâk
 - (aw) kel châwl ang
 - (b) aite chhin
 - (ch) arte lu kâwn
 - (d) ni la vui zo lo
4. A dik zawnah **D** dah la, a dik lo zawnah **X** dah rawh.
- (a) Thil ṭhial reng hi ha chang ṭhial a ni.
 - (aw) Chaw fâk hun hma deuh hi nau rilṭam a ni.
 - (b) Lu mêt kâwng hi arte lu kâwn a ni.
 - (ch) Chil chhâk phâk hi hla tak sawi nan an hmang ṭhin.
 - (d) Tih tak tak hmaa ti chhin hi aite chhin a ni.
 - (e) Hlim taka inbia hi be chhawhchhi a ni.
5. Heng thute hi a dik lo lai tidik rawh.
- (a) Nachinah motor-in mi a chil.
 - (aw) Pawisa i nei ngah bik lutuk.
 - (b) Meian bei in hmeh dawn elo?
 - (ch) Ka damdawi ei ka ngaih lutuk.
 - (d) Hetah han i chawl ang u.

ZIRLAI 15

HNAM INPUMKHATNA

R. Lallianzuala



Mihringte hi nung ho tura Pathian siam kan ni a. Inpumkhat leh inlungrual taka khawsa tur kan ni. Eng ram pawhin a mamawh ber pakhat chu hnam inpumkhatna hi a ni. India mite hi hnam hrang, tawng hrang leh culture hrang hrang nei, sakhaw hrang hrang biate ni mah ila, kum hei leh chen hi inngeih dial dialin kan khawsa thei a ni.

India Prime Minister hmasa ber Pu Nehru-a chuan India rama mipui hi huan zau tak pakhata pangpar rawng chi hrang hrang mawi taka par vul chûk hi a tehkhin a. Chung pangparte chu a par dan leh a rawng te, len lamah te inang lo mah se, an zavaia mahni nih dan tur ang theuhva an par chuan huan duhawm tak, pangpar mawi hlira khat a lo ni thei ta angin, he India ramah hian hnam tin zalen takin kan cheng ho va. Kan ram kan hnam timawitu kan ni thei theuh a ni.

India ram hi khawvela ram zau ber chu a ni lo nain, mihring tam lamah erawh chuan India ram lêt dawn laia zau China dawttu kan ni. India ram lêt thum vela zau America ram ai pawhin mihring chêng kan thahnem zawk a. Heti khawpa tam mi chi hrang hrang hi khawsa ho mah ila, ram dan bawhchhe lova thuawih tak leh tihnuam taka kan awm chuan ram ropui leh zahawm takah kan ram hi kan siam thei a ni.

India ramah hian hnam hnufual leh hnam têngu humhalh bik ngai eng emaw zat an awm a. Chung zinga thenkhat

chu Mizote leh Arunachal Pradesh-a mite hi an ni. Hnam lian zawk leh tam zawkten an chim ral mai loh nan an State-ah mi tin duh duhin an luh phal a ni lo va. Phalna bik (Inner Line Permit) neite chauhvin India ram hmun dang aţang leh India ram pawn aţangin an tlawh phal a ni a. Mi  a pangngai leh dan z awmte tan Inner Line Permit hmangin eng lai pawhin zin luh theih reng tho a ni a. Hnam inpumkhatna tichhe tur ni lova tinghet zual sauh sauh turin intlawh pawh tawn hi a  angkai  m  m a ni.

 awng thiam hi hnam inpumkhatna hmanraw  angkai tak pakhat a ni bawk. Hnam dang  awng tlem tal pawh kan thiam loh chuan anmahni n n kan inpumkhat thei  hin lo. English emaw, Hindi emawa kan biak theihthe nen chuan kan in hian nghal thei  hin. Assamese emaw, Bengali emaw, Nepali emaw hmangte pawh anmahni  awnga kan biak theih chuan kan inngeih sawt  hin. Hnam dangte pawhin Mizo  awnga min biak theih chuan kan inn l thei nghal mai. Chuvangin,  awng chi hrang thiam tam hi hnam inpumkhatna atana hmanraw  angkai tak a ni a, thu a sawia sawi theih b kah an hlate sak thiam tel hi a  angkai  m  m bawk.

Engte nge hnam inpumkhatna tichhe theitu chu? Mahni hmasialna avang te, mi dang itsikna avang te, India Danpui pawisak lohna avang tein hnam inpumkhatna hi mi tu pawhin a tichhe thei a. Heng lakah hian inven fimkhur a   l tak meuh a ni. India Danpuiin mi tin chanvo leh ham hatna tur min ruahmansak te duh khawp lova sawrkar laipui laka hel chin te, phal loh thil zawrh leh hnam dang kawm ngeih duh lohte hi hnam inpumkhatna d ltu lian zual deuh deuhthe chu a ni a. Heng hi a lo thlen loh nan sawrkar laipui pawhin theihtawp a chhuah  hin.

Hnam inpumkhatna tihngheh deuh deuh nan kawng hrang hrangin hma a lâk theih. Infiamna neih ho te, hnam lâm inentir tawn thin te, hmun pawimawh intlawh pawh tawn te, Republic Day leh Independence Day-a State hrang hrang mi Delhi khawpuia inhmuh khawm te hi tuna hmanraw hman mêk tlanglawn zualte chu a ni a. Tin, hnam inpumkhatna intawh khawm (National Integration Camp) an tih ang te pawh state hrang hrangah a inhhâwkin nghah kual a ni bawh thin a. India rama state hrang hranga sikul naupangte tan kum 1976 khan a tum khatna atan National Integration Camp hi Mizoramah nghah a ni ve tawh nghe nghe.

Vun rawng inan lohna te, tawng hranna leh sakhaw biak danglamna te hi hnam inpumkhatna dâltu atan hman rêng rêng tur a ni lo. Ram ropui tak ni tur chuan mi chi hrang tam tak kan chen ho a tûl a. Khua leh tui rinawm tak, dan zâwm peih mi leh mi dangte tana tangkai ni thei tura thawk rim kan nih theuh phawt chuan kan ramah hian eng lai pawhin hnam inpumkhatna hi a par vul reng dawn a ni.

TIH TURTE

1. Heng zawhnate hi chhang rawh.
 - (a) India ram hi khawvela ram zau ber leh mihring tamna ber a ni em?

 - (aw) India ram Prime Minister hmasa ber kha tu nge ni a, India ram hi eng nen nge a tehkhin?

2. Hnam inpumkhatna tichhe theitute kha han ziak teh.
3. Hnam inpumkhatna tihngheh dan kawng li tal ziak rawh.
4. Hnam a lo par vul reng theih nana thil ʔangkaite kha han tar lang teh.
5. A kar âwlahte hian dah khat rawh.
 - (a) America hi India ram _____ vela zau a ni.
 - (aw) Eng ram pawhin a mamawh ber pakhat chu _____ hi a ni.
 - (b) Mizoram leh Arunachal Pradesh-a luh phalna hi _____ a ni.
 - (ch) ʔawng chi hrang thiam hi _____ atana hmanraw ʔangkai tak a ni.
 - (d) Hnam inpumkhatna intawh khawm hi Sap ʔawngin _____ an vuah.
6. ʔawng thiam pawimawhna hi in zirtirtu hovin sawi ula, ziak bawh rawh u.
7. A dik zawnah **D** dah la, a dik lo zawnah **X** dah rawh.
 - (a) India ram hi khawvel mihring tamna ber ram a ni.
 - (aw) Dan pawisak lohna avangin hnam inpumkhatna hi mi tu pawhin an tichhe thei.
 - (b) Mi chi hrang tam tak kan chên ho hian ram ropuina kan tichhe thei.
 - (ch) Hnam dangte nen an ʔawnga kan inbiak theih chuan kan inʔhian nghâl thei ʔhin.
 - (d) North East-ah hian state 6 lai a awm.
 - (e) Hnam dang kawm ngeih duh loh hi hnam inpumkhatna dâltu lian tak a ni.

ZIRLAI 16

RIMENHAWIHI



Hmanlai hian nu hmel tha deuh mai Rimenhawihhi hi a awm a, a pasal chu Zawlhthia a ni. Rimenhawihhi hmel thatzia chu khaw tinah an sawi huai huai thin a. A sam sei mawi tak chu a hmingthanna ber pakhat a ni. An in kianga luiah chuan a inbual thin a. A thla tuia lo lang chu amah pawhin a en ning thei lo va. Tum khat chu luia a inbualnaah a sam zai khat a fla ta hlah mai a, tui chuan a len thla zel a, sangha pakhat hian a lo dawlh a. A sei em avangin chu sangha lian tak pawh chu a puar awk mai a ni.



Chu lui mawng lamah chuan lal pakhat hi a awm a. Ni khat chu a chhiahhlawhte hnenah chuan, “Sangha min va mansak teh u,” a ti a. A chhiahhlawhte chuan Rimenhawihhi sam dawlhthu sangha chu an va man hlah mai a. Sangha chu a puar em avangin, “Eng nge a ei i en teh ang,” an ti a, an khei ta a. Sam zai hlir hi a lo awm a, an han pawt a, sam zai pakhat chauh sei em em hi a lo ni a, mak an ti em em a. Mak an tih em avangin an pu hmuh ve turin an hawn ta a.

Lalin a lo hmuh chuan chu sam zai neitu zawng chhuak turin a chhiahhlawhte chu lui hnâr lamah a tir ta a. Chhiahhlawhte chuan lui chu an zawh chho zel a, a tawpah chuan Rimenhawihite in an han thleng ta a. An in chu thir in a ni a, a pasal Zawllthlia zin bo hlân a nih avangin chung lamah a inkalh khung tlat a. Chhiahhlawhte chu an lut thei lo va, pawn aṭang chuan hlain an au ta a.

In thira mi, in dâra mi

Tu maw i hming min hrilh rawh

an ti a. Ani chuan an aw aṭang chuan a hriat ngai loh mi an ni tih a hria a, a hming tak chu a hrilh duh lo va, hla vêkin,

Hming lêm hming lêm ka nei lo,

Tuisikringi ka ni e, Antlakringi ka ni e

a ti a. Chhiahhlawhte chu intihre takin an haw ta a. An pu hnen an zuk thlen chuan, “Sam neitu chu kan zawng hmu a, a hming chu Tuisikringi, Antlakringi a ni,” an ti a. Lal chuan, “Chutiang hming a awm ngai lo, a hming dik tak han zâwt leh rawh u,” a ti a. Tichuan, an kal leh ta a.

Rimenhawihite in an thlen chuan an tih dan pangngaiin a hming chu an han zawt leh a. Ani chuan a chhan ngai bawkin a lo chhang leh a. Lal hnenah chuan, “Ka pu, a hming chu a sawi dan ngai bawkin a sawi,” an ti a. Mahse, lal chuan a ring thei lo va, a tir nawn leh ta a. A tawpah zawng a ning ta deuh va,

Rimenhawihite ka ni e,

Menchanghawihite ka ni e

tiin a hming dik tak a hrilh ta a. A hming an hriat tâk avangin an lawm êm êm a, theihngilh an hlau lutuk a, “men, men, men,” an ti mawlh mawlh a.

Tichuan, an lal hnenah chuan intithei takin, “A hming dik tak kan hre tawh,” an ti a; mahse, an han sawi dawn a, a hming pum chu an sawi hlei thei ta lo va, “Men ka ni a ti,” an ti ringawt mai a. Lal chu a lungawi thei chuang lo va, “Rang takin tlan leh ula, a hming pum chu han hre ngei ngei rawh u, in hriat loh vaih chuan in châk lo vang,” a ti khur khur mai a. Hmanhmawh takin an tlan leh ta a. Chumi tum chuan a hming pumin an chhinchhiah thei ta a. Lal hnenah a hming an han sawi a, lal chuan, “Chu zet chu a dik ta. Pasal nei a ni emaw, ni lo emaw han hruai rawh u,” a ti ta mai a.

Lal thupêk ang chuan an kal ta a. Rimenhawihhi pasal chu a lo zin bo leh hlauh mai a. In chu chhung lam aţanga a inkalh tlat avang chuan an hawng thei si lo va, in chung lamah an lawn a, lalin thei rah tinreng a kentir chu in chhungah chuan an zu thlâk a. A tirah chuan Rimenhawihhi chuan a ngaihsak duh lo va. Thei rah chi hrang hrang an thlâk zel a. A tawpah chuan Rimenhawihhi thei tui tih ber serthlum chu an thlâk fuh ta a.

Serthlum hmin tai tha tak a hmuh chuan a va ban dau dau a. Chutih lai tak chuan pakhatin a sam zaiah a lo man a, a sam chu a mawi êm avangin a tih mai a hlau va, hreh tak chungin a inmantir ta a.

Rimenhawihhi chuan a ui leh ârte hnenah chuan, “Hei râlin min man a, in pu a lo haw veleh lo hrilh ula, kal kawngah la zai ka lo zam zel ang e,” tiin thu a chah a.



Chhiahhlawhte chuan an kalpui ta a. An kal liam hnu chuan a pasal Zawlthlia chu a lo haw a. An ui leh ârhote chu an lo kal khawm tuau tuau va, Zawlthlia chuan ui hnenah chuan, “Khaw nge i pi?” a ti a.

Ui chuan,
“*Bauh, bauh, bauh,*
Thlangtiang lenkaw! khûm zo ta,
La zai zui rawh,” a ti a.

Âr a han zâwt leh a, ani chuan,
“*Ti ti ik ik,*
Thlangtiang lenkâwl khûm zo ta,
La zai zui rawh.”

a ti ve leh a. Zawlthlia chuan Rimenhawihite chu a ûm ta a, a va nangching a, Rimenhawihite mantute chu a that vek a. An nupa chuan an haw dun a, an dam chungin tu ma tihbuai lohvin hlim takin an awm ta a.

Thu pawimawhte

hmingthanna	dawlh	va mansak
nangching	tuau tuau	zawh chho
inkalh khung	intihre tak	intithe
chhinchhiah	inkalh tlat	ngaihsak
pangngai	kal liam	

TIH TURTE

1. A âwlahte hian dah khat rawh.
 - (a) Zawlthlia chuan Rimenhawihhi chu _____
an man tih a hre thiam ta a.
 - (aw) Thlang deuhvah hian sangha pakhat hian a
_____ chu a lo dawlh a.
 - (b) A tawpah chuan _____ in an han thleng ta a.
 - (ch) _____ hmin tâi ðha tak a hmuh chuan ei a
châk hle mai a.
 - (d) Ui hnenah chuan, “ _____ i pi?” a ti a.

2. Heng zawhnate hi han chhang teh.
 - (a) Rimenhawihhi pasal kha khawiah nge a kal?
 - (aw) Rimenhawihhi pasalin ui hnena a pi kalna a zawh khan
ui khan engtin nge a chhan ?
 - (b) Rimenhawihin hlaa lal chhiahhlawhte a chhan dan
kha a vaiin han ziaak teh.
 - (ch) An rante hnena Rimenhawihhi thuchah kha eng nge ni?

3. Rimenhawihhi ðhatna kawng hnih ziaak rawh.

4. Heng thute hi hrilh fiah rawh.
khei, inkalh khung, nangching, lenkâwl.

5. Heng thu a danglam dana dahte hi a thu pangngai ziaak rawh:

ðhat	_____	hmingthan	_____
lo lan	_____	hmuh	_____
luh	_____	ngai loh	_____
thlen	_____	chhan	_____
zawh	_____	ðilh	_____
hlauh	_____	tihbuai	_____

6. Heng thu hi han phuah zawm teh.
 (a) Sangha chi hrang tam tak a awm a. Lian pui pui te, te tak tê tê te an awm bawk a. Sei tak _____
 (aw) Luiah tui a luang dam dam a. Sangha leh chakaite _____

7. A hnuaia hmun âwl laiah te hian heng thumal zinga inhmeh ber hmang hian dah khat rawh.

hawng hruai hmu theihnghilh
lut inkalh khung

Rimenhawihi	chu inah a	
tlat a. Amah		tura lo kalte
	turin kawng chu a va	
Hei i samkhuih i		a, pe turin kan rawn
	a nih hi	

ZIRLAI 17

ZO TUI THIANG TE

Letlingtu: L. Biakliana



1. Zo tlang sang ata zo lui tê tui thiang,
A luang dem dem, a luang dem dem;
Ni zung êng mawiten hla mawi an rawn sa,
A luang dem dem zel a.

Zo tui thiang tê, luang dem dem rawh,
Tuipei fâwn vêl panin;
Zo tui thiang tê, luang dem dem rawh,
Thianglimna hla sain.

2. A lo luangin a lo darh zau zel a,
Ri her herin a luang zel a;
A kalna apiangah malsawm a thlen thin,
A luang dem dem zel a.
3. Nipui sen satah hnim hring tidaiin,
A luang dem dem, a luang dem dem;
Sava leh pangpar in tur a pe a,
A luang dem dem zel a.
4. Zo tui thiang iangin keini rual zawng hi,
Zai dial dialin kan kal zel ang;
Hmangaih, intanpui, thianghlim, engthawlin,
Kan zai dial dial zel ang.

TIH TURTE

1. Zo tui thiangin a kalna apianga malsawmna a thlen dante kha han sawi teh.
2. Zo tui thiang tē chu a luang ‘*dem dem*’ a, lui lian pui ni se a hnuaia miah hian eng hi nge inhmeh bera i rin?

a) a luang kur kur	aw) a luang hur hur
b) a luang dum dum	ch) a luang hum hum
3. *Ri her her* hi eng ang ri sawina nge? Ri sawina ṭawng dang dang i hriatte han ziaak teh.
4. *Zai dial dial* hi hlim taka zai ho sawina ṭawngkam pakhat a ni a, zai ho sawina ṭawngkam dang i hriatte han ziaak teh.





5. Heng thu te hi a tlukpui thu han dah teh.

- a) thianghlim
- aw) mawi
- ch) iang
- d) engthawl
- e) hla sa
- f) ri

6. He hla hian eng nge min zirtir a tum han sawi teh.

7. He hla hi in zirtirtu hovin action nen thiam takin sa rawh u.

8. Heng a hnuaia mite tana tui tangkaina han sawi teh.

ZIRLAI 18

KAIRÛMA CHANCHIN



Mizo lal ropui tak Kairûma hi Vùttâia fapate zinga hmingthang ber a ni a. Kum 1852-ah khan Hualtu khuaah a lo piang a. A nupui Thangpuilali nen fa pathum an nei a. A nupui dangte lakah fapa pathum a nei bawk.



Kairûma hi a pa thih hnuah Rûllâm aţangin Ngentiang khuaah a kai a, chu chu a lal ţanna a ni. A lal ţan lai hi kum 1880 vel a ni. Ngentiang aţangin Khawhâiah a kai chho va, chuta ţang chuan Sialhâwk Karmualah a awm leh a, chumi hnu chuan Lailênah a kai pheih leh a. Lailên aţang chuan kum 1893-ah Khawbung ram Tlaikuangah a insuan chho leh ta a ni.

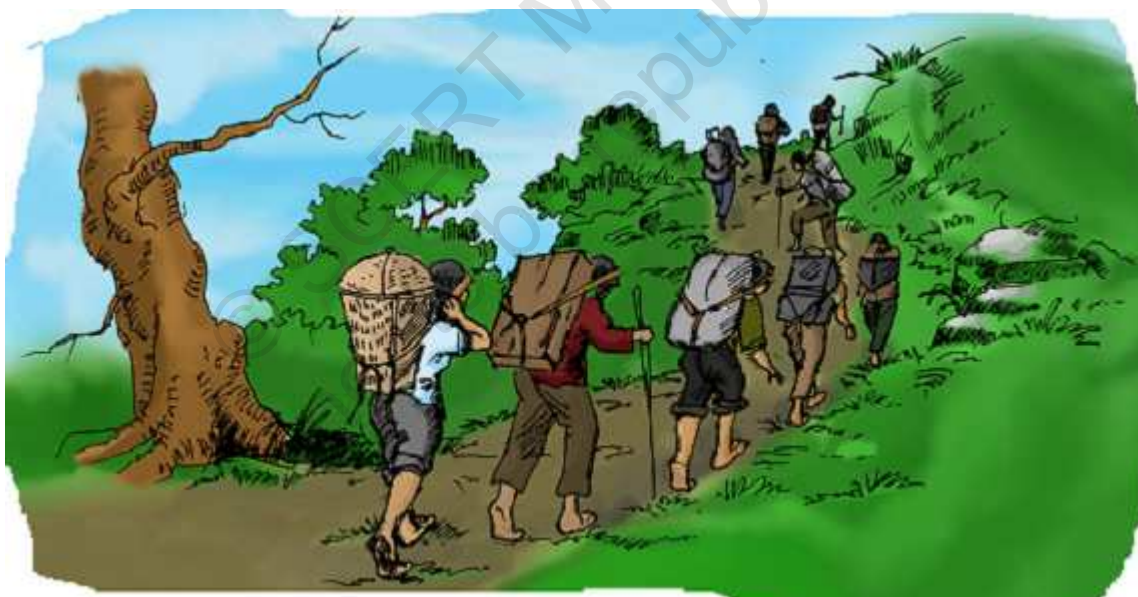
Chutih lai chu British sawrkarin Mizoram awp tura ţan a lâk chhoh mêk lai a ni a. Mizo lal dangte chu an tudawl vek tawh nghe nghe a. Kairûma chauh chu an thu hnuaiia an la dah ve loh a ni a. Chuvang chuan British sawrkar chuan Kairûma chu an enghelh hle mai a. A khua, Tlaikuang bei turin Lunglei aţang te, Aizawl aţang te leh Burma aţang tein ţuang thumin sipai tam tak a tir a. Anrawn pan khawm a, Tlaikuang khua chu an hual ta a.

Kairûma chuan ţan lo khawh sâwtin a hre ta lo va, sipaiho hnenah chuan a inpe ve ta a. A inpek hnu chuan Tlaikuangah chuan a khuate a ţhen la awm thovin amah chu

Bungzung ram Hmuntêah a va awm ta a.

British sawrkarin silai chawi tura an tuk leh kuli an phût te an pek that duh loh avangin kum 1896 kum tirah Tlaikuang chu sipaiin an han hâl a. Amah Kairûma pawh chu an man a, Aizawl jail-ah thla ruk lai an tantir leh ta a.

A tâng lo chhuah hnuah chuan Hmuntêah a han awm leh zet a. A khuateho chu hui khawmin Biateah khaw thar a din leh a, in 350 lai a nei leh ta a. Chutah chuan a thih thlengin a awm ta a ni. A dam rei lo va, kum 60 mi lek niin kum 1912 February thla khan a thi a, ropui taka vui liam a ni a, a lungphun pawh a la ding reng a ni.



A khuah mi chhia an bet lo va, mi tha leh neinung an pâwng hek lo. Chu vang chuan miin an pan a, khuah pawh a ngah hle thin. Biate khuah pawh hi Mizoram buai thleng khan Mizoram thingtlang khaw lian ber a ni reng nghe nghe a ni.

Heng a thatna leh tlinna hrang hrangte avang hian lal

ropui taka ngaih a ni a. British sawrkar pawhin Mizo lal ropui leh khua leh tui vawng thiamah a ngai a. Kum 1911 Coronation Day-ah pawh India ram lal ber hnen aṭangin certificate a dawng a. Chu certificate-ah chuan, “India ram Larsâp chuan Delhi khawpuia Lalber Khumtir Ni hmangtu mi lian kal khawmnaah Kumpinu George V-na hmingin Mizo lal Kairûma, Biate khaw lal hnenah he lehkha hi khua leh tui vawn a thiam avangin a pe a ni,” tih a chuang a ni.

Kairûma chu Mizo lalte zingah British sawrkarin Mizoram awp a tum laia British sawrkar do rei ber leh an laka tlâwm hnuhnung ber a ni a, a ngaih sanawm hle.

Thu pawimawhte

kai	insuan	tutlawm	bet
enghelh	ṭan khawh	kuli	vawng
hui khawm	pâwng	ṭhuang	

TIH TURTE

1. A âwlah dah khat rawh.
 - (a) Kairûma lal ṭan chu kum _____ vêl a ni.
 - (aw) Kairûma hi lal _____ thiam taka sawi a ni.
 - (b) Mizo lalte zinga British sawrkar _____ ber a ni.
 - (ch) Biate khuaah _____ kum _____ thla khan a thi.
 - (d) Buai hmaa Mizoram thingtlang khaw lian ber chu _____ a ni.
2. Kairûma chanchin in zira khaw hming lang zawng zawngte

kha ziak chhuak la, chung khuate zinga i duh ber khaw pakhat chanchin i hriat theih ang ang ziak rawh.

Khaw hming	A chanchin

3. Heng thumalte hi a awmzia zawng chhuak ula, hrih fiah rawh u.

kâi

tudawl

enghelh

ṭhuang

tuk

kuli

4. ‘Khua leh tui’ tih hi i hriat thiam danin a awmzia han sawi fiah teh.

5. ‘A kuaah mi chhia an bet lo va, mi ṭha an pâwng hek lo’ tih hi eng nge a awmzia?

6. **Activity**

Kairûma chanchin in zir aţang hian a lem han chang teh u. Mipa naupang lian berin Kairûma lem chang sela; lalnu lemah chuan hmeichhe naupang sam sei ber chang se. Mipa naupang 4/5 v el chu Sap sipaiho lemah an chang ang a. Kair ma khua sipaiin an hual lai te, sipai hnena a inpe lai etc. te chan ni se. Naupangten an part milin thu sawi  theuh bawk se.

7. Project

Mizo lalte zinga 10, an hming leh an khaw hming leh eng ang lal nge an nih tih i nu leh pa emaw mi dangte emaw zawt chhuak la, ziak rawh.

	Lal hming	Khaw hming	An chanchin tawi
1			
2			
3			
4			
5			
6			
7			
8			
9			
10			

ZIRLAI 19

KUTDAWH THILKAWM



Hmanlai hian Vai ram khawpui pakhatah hian kutdawh hi a awm a. Chênna tur in pawh a nei lo va, in chhâwng sang pui pui bathlar rem laiah a mu mai òthin a. Zâmpher a phah a, puan chhe tê a nei bawk a. Zannah chuan zâmpher chu a phah a, a puan neih chhun chuan a inlukhûp tlat a, a muhil ve mai òthin a.

Chhunah chuan kawngpui lûn laiah chuan thlêng a dawh a, mi lo kal apiangte hnenah chuan òtanpuina a lo dil òthin. Òthenkhat chuan pawisa nâwi an pe a, òthenkhat chuan buhfai leh thil ei theih chite an pe bawk òthin a. Chutianga miin an pek khawm chuan a intungnung ve hrâm hrâm a.



Ni khat chu a bul vêla mi lo kalte titi a òtang chuan an ram lalber, Maharaja chu chumi kawngah chuan a lo kal dawn tih a hria a, a phûr êm êm mai a. Maharaja hmel chu hmuh a châk bâkah pawisa tam tak a pek a beisei a ni.

Zan mutnaah te chuan a ngaihtuah a, suangtuahna mitthlaah Maharaja chu a lo kal a, a lo chibai a. Maharaja chuan kawr mawi tak te, pawisa tam tak te, rangkachak òthi te hi a lo pe a. Tichuan, lal hmuah tum chuan tui takin a mu ta a.

Zingah chuan choâk hrâm ri a hriat veleh phûr takin a tho va, tuichhunchhuahah a kal a, a hmai te a va phih fai a, a kut leh kete chu a sil fai hauh hauh va. Samkhuih hlui chhe tawh tak a neih chu a la chhuak a, a sam a khuih ngai rêng rêng tawh loh chu a khuih a, a pawisa neih chhun chuan a awmna piah deuhva thingpui dawr têah chuan thingpui leh chhang a va lei a, tui ti takin a ei a. Hlim takin a ðhutna hmun chu a pan leh ta a.

Maharaja lo kal tur chu beisei takin a thlir reng a; mahse, tlai lam thleng chuan Maharaja hmel rêng rêng chu a lang thei ta hauh lo mai a.

Ni a tla têt tawh a, mi ðhenkhat chu anmahni in lam pan chuan an liam suau suau tawh a. Chutih lai tak chuan thâwm danglam a hre ta a. Mite chuan an thil tih lai dah ðhain, kawngpui lam chu an thlir ðthuap a.

Kutdawhpa pawh chu phûr takin a tho va, kawngpui hnâi takah chuan a kutdawnha thlêng nêh chuan a pheih ta a. Maharaja chuan mipui te chu chibai a rawn bûk pheih zêl a. Nakinah chuan, kutdawhpa bul chu a lo thleng ta a. Kutdawhpa chuan Maharaja hnenah chuan ðanpuina a lo dil a. Maharaja chu a bulah chuan a ding a, a en vung vung a, kutdawh hnenah chuan a kut a dawh a, “I thil neih eng emaw min pe theih em?” a ti lêt ta zawk hlauh mai a.

Kutdawh chuan, “Ka pu, kutdawh mai ka ni a, eng mah ka nei lo, mi min pek khawm chauh ka nei,” tiin a chhang a.

Maharaja chuan, “Eng pawh, i neih apiang, i phal zat zat min pe mai rawh,” a la ti ta cheu va. A rin ang rêng rêng a ni lo va. Lal ropui leh hausa tak chuan thil ðha a pe ðeuh ang chu a

tih laiin a thil neih chhun a dil tlat mai chu a ngai thiam lo hle a; mahse, lal chu a hlauh êm avangin thlenga a buhfai tlem te zinga mi buh fang nga lek hi a la a, Maharaja kutphahah chuan a dah ta a.



Maharaja chuan, “Ka pu, ka lawm e,” a ti a, a kal leh ta mai a. Maharaja thil tih dan chu kutdawh bâkah a bul hnaia awmte chuan mak an ti êm êm a.

Kutdawhpa chu lungni lo takin a thutna hmun lamah chuan a kir a, a rilru tê tê chuan, “Maharaja chu lal ngilnei tak a lo ni awzâwng lo. Mi retheite thian tih te pheih chu khawi lamah. Hetiang lal duhâm, keini ang kutdawhte thil neih chhun pawh duhtu chu malsawmna dawng tlak pawh a nih loh hi,” tiin lungawi lo deuhin a kal sawn ta a.

Thinrim deuh chungin chumi zanah chuan a mu ta a. Zingah chuan phûr lo takin a tho va. Chutih lai chuan Maharaja chhiahhlawh pakhat hi a lo kal a, buhfai thleng khat hi a rawn keng a. Kutdawh hnenah chuan, “Maharaja ropuia chu i chungah a lawm êm êm a, hei hi lawm thu sawi nan va pe rawh min ti a ni,” a ti a.

Kutdawhpa chuan, “Ka lawm e,” tih pahin buhfai chu a thlêngah chuan a chhung a. Tichuan, Maharaja chhiahhlawh chu a kal leh ta a.

Kutdawhpa chuan a thlênga buhfai chu a han chawkw let a, a rin loh deuhvin buhfang tiat rangkachak hi a hmu ta a, lawm takin a chhar a. A han thâi leh a, a dang a hmu leh ta a. A hmuh belh zel a, panga a hmu ta. Uluk takin a hâi a hâi pawhin a hmuh belh thei ta chuang lo va.

Hlim takin chu a rangkachak pangate chu a puanah chuan a bâwk a. Chutih lai chuan thil pakhat hriat chhuah a nei ta. Maharaja-in a thil neih eng pawh a phal zat zat pe tura a dil khan buh fang nga chiaah a pe a. Buh fang panga a pek zat chiaah rangkachak fang nga a rawn pe ve a ni tih a han hriat chuan, “Aw, ka lo kawm lutuk kha a va pawî êm, Maharaja kha a aia tam lo pe ila chuan, tun aia tam rangkachak ka nei mai tur a nia le!” a ti ta a.

Thu pawimawhte

kutdawh	bathlâr	zâmphêr
zat zat	intungnung	suangtuahna
tuichhunchhuah	liam	mitthlaah
lungni lo	uluk	inlukhûp

TIH TURTE

1. A âwlahte hian dah khat rawh.
 - (a) Hlim takin _____ hmun chu a pan leh ta a.
 - (aw) In chhawng sang pui pui _____ rem laiah a mu mai ðhin a.

- (b) Thinrim deuh chungin chumi _____ chuan a mu ta a.
- (ch) A han _____ leh a, a dang a hmu leh ta a.
- (d) _____ chu a rin ang rêng rêng a ni lo va.
- (e) Uluk takin a thlênga _____ chu a hâi a hâi a.
- (f) Aw, ka lo _____ lutuk kha a va pawî em!
2. A dik zawnah **D** dah la, a dik lo zawnah **X** dah rawh.
- (a) Maharaja chuan, “Aw, ka lo kawm lutuk a, a va pawî êm!” a ti a.
- (aw) Chutih lai tak chuan thâwm danglam a hre ta a.
- (b) Thenkhat chuan, “Kutdawhpa hian lalber hi a ringhlel a ni ang,” an ti a.
- (ch) “Ka pu, ka lawm e,” Maharaja chuan a ti a.
- (d) Kutdawhpa chuan thlênga buhfai chu a thai let a thai let a.
- (e) Chhunah chuan lalber chu a lo kal ta a.
3. Heng zawhnate hi chhang rawh.
- (a) Kutdawh thil neih ve chhunte kha engte nge ni?
- (aw) An ram lalber khan, “I thil neih eng emaw min pe teh,” a tih khan kutdawh khan engtin nge a chhan?
- (b) Maharaja hnen a tang khan kutdawhpa khan eng thil pek nge a beisei?
- (ch) Kutdawh kha khawiah nge a riah thin?
- (d) Maharaja hmuak turin kutdawh kha engtin nge a inbuatsaih?
- (e) A tawpa kutdawhpa thil hriat chhuah kha eng nge ni?
4. Mi tana thilphal hlâwkzia he thawnthu behchhan hian in zirtirtu hovin sawi khawm teh u. Thilphal thatna dang in hriat pawh in sawi bawkw dawn nia.

5. Heng thu inkawp hmang hian sentence siam rawh.
 êm êm rêng rêng
 thuai thuai zat zat
 hauh hauh suau suau
6. A hnuaiia thu awmte hi sentence awmze nei a nih theih nan a thu anpui thai zawm rawh.
 (a) Kutdawhin serthlum min pe a.
 (aw) Maharaja chu motor lem a keng a.
 (b) Zirtirtuin sakawr chungah a chuang a.
 (ch) Naupangin chhiarkawp min zirtir a.
 (d) Parmawian thlêng a dawh a.
7. ‘A, AW, E, I, O, U’- te hi vowel an ni a, hawrawpah hian vowel pahnih inkawp tam tak a awm a. In zirlai hi ngun takin chhiar la, a hnuaiia vowel inkawp in hmuhte ang hian a zawn zelah hian ziaik ve rawh.
 (a) ua – chuang _____
 (aw) ai – mai _____
 (b) awi – sawi _____
 (ch) ei – lei _____
 (d) ui – pui _____
 (e) au – zau _____
8. Heng thumalah hian ‘in’ belhin sentence siam ula, a thumal nen in ziah zawm zel dawn nia.
 Eg: chem – Chemin mau a sat.
 puan, kut, tui, mei, thing, hrui, hmawlh, ke, beng, mit.

ZIRLAI 20



PARTS OF SPEECH

(Ṭawng ṭhen hranna chi hrang hrangte)

Mizo ṭawnga Parts of Speech kan zir dawn a. Sap ṭawnga Parts of Speech chi hrang hrang hming hi khawvel pumin kan hriat leh kan hman ṭheuh a nih avangin a ṭhen hranna hming atan kan hmang ve mai dawn a ni. Preposition erawh chu postposition tiin Mizo Grammar-ah chuan kan hmang ṭhin.

Parts of Speech pariat hmingte chu — **noun, pronoun, adjective, verb, adverb, postposition, conjunction** leh **interjection** te an ni. A hrilh fiahna leh a entirna te nen a mal malin lo sawi zui ila.

1. Noun : Hming (mihring leh thil tinreng hming)
Entir nan : Pathian, mihring, Rokunga, India, Mizoram, Saiha, Phawngpui leh a dangte.
2. Pronoun : Noun aiawha thu hman.
Entir nan : ka, kan, keimah, keini, keimahni, i, in, nang, nangmah, nangmahni.
3. Adjective : Noun leh pronoun hrilh fiahtu.
Entir nan : panga, tam, tlêm, dum, vâ, sen, chhia, ṭha, sang, hniam, lian, têt, leh a dang tam tak.
4. Verb : Thil tih sawina thumal.
Entir nan : ṭhu, kal, ding, tlân, zuang, lawn, ei, in, lem, e, nui, mu, ngaihtuah, ring, hria, ziaak leh a dangte.

5. Adverb : Verb te, adjective te, adverb vêk te hrilh fiahtu.
Entir nan : takin, tak tak, tak meuh, êm êm, lutuk, rura, viau leh a dangte.
6. Postposition : Noun leh pronoun zawm leh dawta thumal hman thinte.
Entir nan : a, ah, ațangin, atan, chungah, hnuaiah, kiangah, bulah, sirah, piahah, laiah leh a dangte.
7. Conjunction : Thu zawmna.
Entir nan : leh, avangin, chuvangin, chutichuan, mahse, nâa, erawh chu, nimahsela leh a dangte.
8. Interjection : Rilrua thil lo thleng thut leh phûrna lan chhuahtirna thu hi a ni.
Entir nan : Aw! E khai! E heu! Awi! Chu! Uai! leh a dangte.

TIH TURTE

1. A hnuaiia thumal aţang hian adjective leh verb han thliar hrang teh.

zai	mawi	siam	thlum	thlâwk	sei
seh	sât	fel	hriam	en	tlem

Adjective -

Verb -

2. A hnuaiia thute hi thu uarna  awngkamin han chhunzawm teh.

Entir nan: I zai thiam – I zai thiam khawp mai.

- (a) A va mawi
(aw) I ziak nalh
(b) Ka pa chu a zaidam
(ch) Kan sikul chu a hla
(d) Kan zirtirtute chu an fel
3. A hnuaiia kar âwl hi thu zawmna (conjunction) hmangin han dah khat teh.
- (a) Lala _____ Sanga _____ han ko teh.
(aw) Sangteii chu a fel; _____ a zakzum deuh.
(b) Zami chu a nuin a zinsan _____ a lung a leng.
(ch) Pen _____ pencil ka lei.
(d) Vawk _____, ar _____, kel _____ kan vulh.
4. Mizote hna thawhna hmanraw hming i hriat apiang han ziak teh.

5. Kualkhung chhunga a dik zawk hi thlang chhuak rawh.
- (a) ‘naa’ hi (postposition/conjunction) a ni.
 - (aw) ‘riau’ hi (adverb/verb) a ni.
 - (b) ‘chhakah’ hi (postposition/interjection) a ni.
 - (ch) ‘sava’ hi (adjective/noun) a ni.
 - (d) ‘nangni’ hi (pronoun/conjunction) a ni.
 - (e) ‘êu!’ hi (adjective/interjection) a ni.

6. A hnuaia thumalte hian awmze hrang hrang an nei a, a entirna pek ang hian an awmze hrang tifiyah turin sentence han siam ve teh.

Entir nan: zâm – 1) Maian a zâm.
 2) Hrui zam hnawk suh.
 3) Zâm rêng rêng suh.

- (a) bal
- (aw) lei
- (b) zing
- (ch) hlim

7. Heng thu epte hi han ziaak teh.

lâwn	-	_____
tam	-	_____
chhia	-	_____
thu	-	_____
ziaak	-	_____
fai	-	_____

8. A dik zawnah **D** dah la, a dik lo zawnah **X** dah ang che.

(a) Hming tawh phawt chu pronoun a ni.

(aw) Conjunction chu thu zawmna a ni.

(b) Thil tih sawina hi adverb a ni.

(ch) 'êm êm' tih thu hi adjective a ni.

(d) Pangpar hi noun a ni.

9. In sikul chanchin tawi têin ziak la, adjective thu i hman apiang hnuaiah rin ang che.

<hr/> <hr/> <hr/> <hr/> <hr/> <hr/> <hr/> <hr/> <hr/> <hr/> <hr/> <hr/>

ZIRLAI 21

PATECHAKA



Hmanlai hian khaw pakhatah hian pa chak deuh mai hi a awm a. Amah chu pa tê lam deuh a ni chungin a chak êm êm a; chuvangin, a hmingah pawh Patechaka an ti hial a ni.

A naupan lai chuan naupang harh deuh mai leh ùan tha zet mai hi a ni a, tirh lah chu a awih phian mai lehngal a. Puitlingin naupang an tirh te hian a tlan vat ùin a, tu man an tlan khalh hman ngai lo. Harh viau e ti lo chuan thawnthu ngaihthlak hi nuam a ti êm êm a, che lo châng lovin a ngaithla dauh dauh ùin a ni. A pa chu an khaw pasaltha a ni a, ramchhuah chanchin te, râl rûn chanchin te a hrilh ùin a, ngaihnaawm a ti hle ùin. A pa chu huaisen hle mah se, a zaidam viau a, a vin ngai lo. Chuvangin, a pa bulah chuan a thlamuang a, hlahuh rêng a nei ngai lo.

Ni khat chu an khuaah chuan mikhual a lo kal a, pa lian pui mai, ngo deuh, sam var vo mai hi a ni lehngal a. Naupanghote chuan an en duh khawp a, an bawr luai luai mai a. Mikhual pa chuan naupanghote chu a ùuttir a, thu a sawi ta a. “Sap ram aṭangin ka lo kal a, Pathian thu awih ve turin ka duh che u a ni. Pathian thu in awih chuan vanramah in la kal dawn a ni,” a ti a. A ṭawng a pai deuh avangin naupangho chu an nui ham ham a, a thusawi an hriat thiam loh avangin, “Sawi leh rawh,” an ti sap sap a. Sap pa chuan, “Pathianin a hmangaih che u a, amah chu ring ula, a veng him zel ang che u,” a ti leh a. Patechaka chuan, “Kei chu awih ka duh e,” a ti a. Naupang dangte pawh

chuan, “Kei pawh,” an lo ti sap sap bawk a. Patechaka chuan mikhualpa chu an inah a hruai a, a nu leh pate hnenah, “Hei, Sap ka rawn hruai a, Pathian thu a sawi a, ngaithla ve mah teh u,” a ti a.



Sappa chuan, “Pathian chuan engkim a ti thei a, engkim hi a siam vek a ni. Ani chuan min veng thin a, amah chu mi zawng zawng pa a ni,” a ti a. “Ka pa aiin a huai zawk em ni?” tiin Patechaka chuan a zawt a. Ani chuan, “Mi zawng zawng aiin a huai alawm. Mahse, min vengtu a ni a, min tidamtu a ni bawk a, mi zawng zawng hi kan vaiin min hmangaih vek alawm,” a ti a. Patechakate chung chuan a thusawi chu tha an ti ta hle mai a, Kristianah an inpe ta a.

Patechaka chuan lehkha te a zir ve a, lâwr hial a pass ve ta a. A lo tlangval chuan a chak telh telh a, lo vah te, hlo thlawh te pawh a chak êm êm a ni. An khaw tlangval chaka sawi a lo ni ta a. A chakzia chu miten an sawi huai huai thin a, buh leh bal an thar rei rui mai thin a. An khaw nula hmel tha ber nen

an innei a, fa duhawm tak tak 10 lai an nei a. Patechaka chuan an nu hnenah, “Nu-i Pathian zarah kan dam ang a, theihtawpin hna ka thawk ang a, tlachham chuan kan awm bik lo vang,” a ti ðhin a. A fate hnenah pawh, “I nu nen hian kan hmangaih êm êm che u a, in ðhatna tur leh in hlimna tur hi kan duh ber a ni a. Chuvangin, Pathian ðih ula, a thupekte vawng tlat ang che u. Chu chu hlimna a ni tih hre reng ang che u,” tiin a hrilh fo ðhin.

Hmanlai chuan pate hian nau an paw ve ngai lo va, ei rawng an bawl ngai hek lo. Mahse, Patechaka chu Kristian a ni a, lehkha a thiam bawkw avangin eng mah thawh hreh a nei ngai lo. A ðul changin nau a awm ve fo va, rawng te a bawl a, buh thlei chenin a thiam hle a ni. An fate chu an chhang a zin avangin a nupui chauhvin a enkawl seng lo tih a hria a, nau êk sùk thlengin tih hreh rêng a nei ngai lo. A fate chu a hman chang apiangin a awm a, thawnthu leh Pathian thu a hrilh fo ðhin. Patechaka chu mi hlim thei tak a ni a, a bula awm pawh a nuam êm êm a ni. A hawihhawm a, kawm a nuam hle bawkw. A fate hnenah pawh, “Engkimah vuivaina zawng lova lungawi chin tur a ni a, insual buainaah tel lovin a ðhelhtu nih tum tlat ang che u,” a ti ðhin.



A fate chuan an ngaina êm êm a, a thu pawh an awih a; mahse, an pa hming chu an zahpui deuh chang a awm thin a. Tum khat chu a fanu chuan, “Ka pa, engati nge Patechaka an tih che?” tiin a zawt khauh mai a. Ani chuan, “Min koh fiamna mai mai hi ka lo pu hlen ta alawm le,” a ti a. A nu chuan, “Mawina keiman ka hrilh ang che u. I pa hi inbuan chak a ni a, hnathawh pawh a chak bawk a. Vawi khat pawh kangvarah hian mang kan khawh a, ni khatah kan khawh zo vek maw le! Mi dangte chuan ni thum te, kar khat lai te an khawh thin a. Chu lo pawh maw, châk la chawpin ni khatah kan thlâm a sa zo vek alawm. Kei pawhin chumi tum chuan mak ka ti hle mai. A ri sun sun a, a thawk buan buan a, a sa zo hman der nia maw le!” a ti a. An fate chuan, “A chungah eng nge a hman?” an lo ti a. A nu chuan, “Ni tak e, a chung di tur erawh chu a hmain lovah kan keuh sa tak e,” a ti a.

Chutia a pa chakzia an nuin a hrilh atang chuan a pa hming pawh chu an zahpui leh ngai tawh lo a ni. An pa chu an ngai sangin a thu an awih sawt bawk a. Patechaka chuan, “Eng hna pawh thawh thiam vek tur,” a ti thin a. A fate pawh hnathawh engkim a zirtir a, a thawhpui bawk a, “Thiam sa eng mah a awm lo va, beidawng lova zir zel mai tur,” a ti thin a ni. “A hun takah engkim tih chin hram hram tur,” a ti bawk a, amah pawhin hun a vawng dik a, tih tur rêng rêng a khêk ngai lo.

Patechaka chuan a nupui fanaute tan in tha tak a sa a, chhungkaw nuam tak a din a ni. A nupui chak lohna a hre thiam a, chhungkaw tana a tangkaina a hre thiamin lawm thu hrilh a hreh lo. A fate tan hun a ui ngai lo va, an thil zawh apiang te chu tha takin a chhang thin. A infiampui thin a, hna te a thawhpui bawk thin. A thu zirtir dangte chu hengte hi a ni:

- Thil ṭha lo rêng rêng chu tih duh loh tlat mai tur a ni.
- Aia upate zahna lantir ṭhina, an thu awih zel tur.
- Chapo tur a ni lo va, mi dangte zai ngaih thiam tur a ni.
- Chaltlai taka ṭawng aiin ṭawng hawihhawmin mi a hneh fo ṭhin.

Thu pawimawhte

ṭuan ṭha	thlamuang	ngaithla	tidamtu
buh leh bâl	theihtawp	hawihhawm	zai ngai
tih hreh	mang khawh	châk la	thingtuai

TIH TURTE

1. Heng zawhnate hi chhang teh.
 - (a) Patechaka kha a naupan laiin eng ang mi nge a nih?
 - (aw) Patechakate khuaa mikhual lo kal kha eng mi nge a nih a, eng nge a rawn tih?
 - (b) Patechakan tu nge nupuiah a neih?
 - (ch) Eng vanga Patechaka khan thawh hreh nei lo nge a nih?
 - (d) Patechaka khan tute tan nge a hun a ui ngai loh?

2. A âwl lai dah khat rawh.

Patechaka chu naupang _____ tak a ni a.
 _____ a ngaithla duhin _____ thei tak mai
 a ni.

Ni khat chu an khuaah _____ a lo kai a,
 “ _____ ” a ti a; mikhualpa chu an
 inah a _____ a. Pathian thu a sawi zawh chuan an
 chhungin _____ an inpe ta a.

Patechaka chu _____ a ni a, _____
 bawk avangin eng mah thawh _____ a nei ngai lo.
 A ÷ul apiang a thawk a, _____ pawh a thiam.

3. In chhungkaw tana i pa hlutna ni-a i hriat kawng li tal ziak
 la, a hnenah lawm thu sawina ziak bawk ang che.

SI No.	Ka pa hlut êm êmna	Lawm thu sawina
1		
2		
3		
4		

4. In chhungkaw tan tuin nge heng hnate hi thawk ÷hin? A
 thawktu bulpui ber i ziak mai dawn nia.

- (a) In chenna in tuin nge sa?
- (aw) In chhungkaw tan tuin nge ei rawng bawl ÷hin?
- (b) In in a balhin tuin nge tifai ÷hin?
- (ch) In in chhia tuin nge thawm ÷ha ÷hin?
- (d) Tuin nge in ei tur la khawm ÷hin?

5. Heng thu awmzia hi zir teh u.

- (a) buh leh bâl thar rei rui
- (aw) tirh awih phian
- (b) thawh hreh nei lo
- (ch) zahpui deuh chang awm
- (d) koh fiamna mai mai
- (e) kângvâra mang khawh
- (f) châk la chawpin

6. He thu hi ziah dan tur dik takin ziak chhuak teh u.

patechaka chuan pathian a ðih a insual buainaah a tel ve ngai lo. thil ðha lo reng reng chu a ti duh lo va, a tichhin duh der lo. A chapo lo va mi dangte a ngai pawimawhin a zah thiam êm êm. A hawihhawmin aia upa a zah thiam êm êm. aia upa a zah thiam bakah thu a awih thei hle. A taima êm êm a eng hna pawh thawh thiam a tum tlat ðhin. A vui ngai lo va a tlai ngai lo va engkimah a lungawi a ni.

7. Heng hmang hian thu han phuah teh.

- (a) thupek _____
- (aw) var vo _____
- (b) vêng him _____
- (ch) enkawl _____
- (d) thingtuai _____
- (e) châk la _____

8. Heng milemte hian eng nge an tih sawi la, a titu hi eng ang mi nge ni-a i hriat sawi baw k teh.



9. Project: Group 4-ah inthen ula, hetiang hian chawlhkar khat chhunga tih tur insem ang che u.

Group 1	Group 2
Group 3	Group 4

Group tinte tih tur

Group 1. In veng/khuraa pa **huaisen deuh** ni-a mi sawi zawt chhuakin an huaisen dan chanchin ziak rawh u.

Group 2. In veng/khuraa pa **hausa ber** ni-a an sawi zawt chhuak ula, engtia lo hausa ta nge a nih amah zawtin a sawi dan ziak rawh u.

Group 3. In veng/khuraa pa **fel** ni-a miin an ngaihte zawt chhuakin, fel an tihna chhan zawt ula, ziak chhuak rawh u.

Group 4. In veng/khuraa pa **taima ber** zawt chhuak ula, a taihmakna kawng leh a taihmak dan chanchin ziak rawh u.

Group tinin an tih tur an tih zawhah classroom-ah report-in, sawi ho ang che u.

© SCERT MIZORAM
not to be republished

ZIRLAI 22

TEUH LO MAI

H.C. Sanglura



1. Eng kan ti ta nge ni le? Zofa lêng zawnge;
Thian chhan thih ngam mi huaisen,
Sa hrâng hmaa zâm ngai lo kha;
Sualna dorâl tâwnah, kan zâm mai dawn em ni le?

Teuh lo mai, a teuh lo mai.
Kan zâm mai dawn lo Zofa,
Dorâl leh sa hrâng hmaa,
Zâm ngai lo val kan ni lo'm ni?

2. Thlirin han hawi vêl ila, kan vangkhawpui laitual;
Sualna dorâl lian hrângin,
Laitual a lêng vêl e!
Kan zâm mai dawn em ni le, kan tâwm mai dawn em ni le?

(Bridge)

Chhan tâk kan la awm,
Min chhan r'u tia au hi;
Laikhum bêlin, i lo chhin bosan dawn em ni?

Hla thu har hrilh fiahna

dorâl tâwnah	-	râl lakah.
sa hrâng	-	sa kawlh, sa hlauhawm.
zâm	-	hlau, tîm, hlauthâwng.
tlâwm	-	chak lo, hneha awm.
ṭhian chhan thih ngam	-	ṭhiante chhana thih pawh hlau lova ṭang. (Heta chhan hi ‘a chhan chu’ tiha chhan anga lam ri lovin ‘min chhan rawh’ tiha chhan rik dan angin lam rik tur a ni.)

TIH TURTE

1. A âwlah hian a hlaa mi angin dah khat rawh.
 - (a) _____ thih ngam mi huaisen.
 - (aw) Sualna _____ lian hrângin.
 - (b) Chhan _____ kan la awm.
 - (ch) Kan _____ mai dawn lo Zofa.
 - (d) Zâm ngai lo _____ kan ni lo’ m ni?
2. Heng hla thute hi han hrilh fiah teh.
 - (a) lêng
 - (aw) dorâl
 - (b) laikhum
 - (ch) laitual
 - (d) hrâng

3. ‘Râl’ tihna hla thu chu ‘dorâl’ a ni a, chutiang chi chuan heng thute hi hla thûah han siam ve teh.

_____ tui
_____ thing
_____ puan
_____ lei
_____ van

4. ‘Ram leh hnam’ tih thu inkawp ang hian heng a hnuaia thute hi a kawp tur ziak rawh.

(a) chûn leh _____
(aw) _____ leh vâng.
(b) thim leh _____
(ch) _____ leh zan.
(d) chhung lam leh _____

5. “I chhin bosan dawn em ni?” tiha ‘chhin’ hi chhing modified form a ni a; he hla aṭanga lak chhuah heng thute hi a modified form han dah ve teh.

(a) hrâng (aw) lêng (b) lo
(ch) au (d) ni

6. He hla phuahtuin khaw chhunga سوالنا dorâl lêng vel a tih hi engte nge ni-a i rin? Ziakin han chhang teh.

7. He hla hi en lova sawi chhuak thei turin vawng ula, ziak chhuak rawh u. In sak thiam chuan a rualin sa ṭhin bawk rawh u.

8. Râl lakah emaw, sa kawlh lakah emaw Mizo zinga miin ṭhiante chhan nana thih ngamin **ṭhian a chhan dan** i nu leh pate emaw a hre âwmte emaw zawtin ziak rawh.

ZIRLAI 23

MI HLAWHTLING I NI THEI ASIN



Mihring pangngai zingah hian mi ropui leh mi hlawhtling nih duh lo kan awm kher awm lo ve. Eng vangin nge kan nu leh paten lehkha zir hram hram tura min fuih ṭhina, eng vangin nge kan zirna atan pawisa te an sêna, hah pawh sawi thei lova rim taka hna an thawh ṭhin kan tih chuan, an fate hi mi ropui tak ni turin min duh a, thiamna sang tak nei sela min ti a, an faten hlawhtlinna kan neih theih nan hrehawm pawh pawisa lovin kan tan ni tin an thawk ṭhin a ni.

Chutianga mi ropui leh hlawhtling ni tura kan chhungte leh kan nu leh paten min beisei mêk lai chuan keini hian eng nge tih tur kan neih ve le? Kan nu leh pate beiseina tihlawhtling tur chuan mawhphurhna sang tak kan nei tih hi kan ngaihtuah ve ngai em? Mi hlawhtling kan tih te, mi ropui kan tih te hi engtianga lo hlawhtling a, engtianga lo ropui mai nge an nih tih hi kan ngaihtuah ve a ngai a. Hlawhtlinna tlang chhip hi awlsam taka lawn chhuah theih a ni lo tih kan hriat reng a pawimawh êm êm a ni.

Harsatna leh manganna te, lungngaihna leh ṭahna te pal tlang phawt loh chuan hlawhtlinna hi a hlawh chhuah ngawt theih loh va. Anmahni kawng zawh ṭheuhva mi ropui leh hlawhtling kan tihte hian hrehawm tam tak an pal tlang a, thil beidawnthlâk tak tak an tawn ṭum pawh a tam hle ṭhin. Chutiang hun harsain a tlakbuak chang pawha beidawng duh miah lo, tumruhna nena hma lam pan lui hram hramte chuan a tawpah hlawhtlinna an

chang a, an tumruhna zarah mi chung a lêng an lo ni theih chauh
thin a ni.

Khawvela thu ziak thiam ropui ber pawl, Pearl S. Buck-i
chuan a thawnthu ziah ‘The Good Earth’ tih chu chhuahsaktu tur
a zawng a, tu mahin an chhuahsak duh tlat lo va, beidawng duh
hauh lovin chhuahsaktu tur chu a zawng zel a, kum sawmpali
chhung zet chhuahsaktu tur a zawn hnuah a hlawhtling ve hram
a. Chhuahsaktu a han hmuh zet chuan a chhuah kum la lain a
lehkhabu chu bu maktaduai chuang an hralh hman a. Tawng
chi hrang sawmthum chuang zeta lehlin zu han ni a! Amah lah
chuan ziak mite chawimawina sang chi hrang hrang a dawng
zut zut mai bawk a.

Beidawng duh hauh lova a beihna chuan mi ropui a
siam a, a tumruhna avang chuan khawvelah a hming a lo thang
ta êm êm mai a ni. Mi beidawng hma, tumruhna nei lo mi chu
ni sela khawvelah hian a hming a thang hauh lo vang le! Mi
ropuiten hlawhtlinna nei tura an lo beih dan chu chutiang chu a ni
a. Thawk rim leh taima, mi tumruh leh mi huaisente hi Pathianin
mal a sawm thin a, beidawng duh lova an tih hram hramna leh
an tumruhna chuan malsawmna ropui tak a rawn thlen mai thin
a ni.

Thu ziak thiam hmingthang Charles Dickens-a pawh
kha a thu ziah, chanchinbua chhuah tura a pek, chanchinbu
lamin an lo chhuahsak duh loh kha saiip khat a khâwl hman an
ti. Mahse, a beidawng duh lo va, a ziak zel a, chhuah turin a theh
lut ve zel a, an lo chhuahsak duh loh pawhin a tumruhna chu a
tla hniam chuang lo va, a tawpah chuan khawvela thu ziak thiam
lâr leh ropui ber pawl a lo ni thei ta mai a ni.

Hlawhtlinna leh ropuina hi awlsam têa neih mai theih a ni lo va. Kawng harsa tak zawh chhuah phawt a ngai thin. Chutiang kawng harsa kal tlang a ngaih changa kal tlang peih lo, tawpsan mai mi emaw, a hêlna zawng mai mi emaw tan chuan hlawhtlinna hi a awm tak tak thei lo va, tumruh taka kal lui hram hramte thlen phâk ang chu an tan thlen ve ngaihna a awm ngai lo.

Mi pakhat chu chhungkaw rethei takah a lo piang a. Sikul thaah pawh a lut phak lo va, thingtlang sikul naranah lehkha a zir ve mai mai a. An chhungkaw retheihna avangin sikul kal chung a inhlawh a ngaih chang a awm a, hrehawm tam tak a tuar thin. A chung a harsatna tam tak lo thleng thin chu huaisen leh tumruh takin a hmachhawn zel a. A theihtawpin lehkha a zir sauh sauh va. Mangan chang leh tah chang te pawh nei thin mah se, huaisen takin hma lam a pan zel a, a tawpah chuan scientist ropui tak a lo ni ta a ni.

Chu pa chu khawvela ram ropui bera chhâl ngam USA-ah scientist a ni a, lirnghing chanchin zirna lama thiamna sang bik neiin, mi ngaihsan a hlauh êm êm a. Thla khata a sum lak luh chu tam tham tak a ni. Chutiang mi hlawhtling leh ropui chu Mizopa ngei, Lalliana Mualchin a ni. A vanneih vanga scientist ni ta ringawt a ni lo va, a tumruh leh taihmak vang liau liauva scientist ni thei chauh a ni.

Malsawmna leh vanneihna kan tih hi Pathian hnen atanga awlsam taka dawn inbeisei ngawt chi a ni lo va, taihmakna leh tumruhna nen, harsatna tam tak pal tlang hnua dawn theih chauh a ni tih kan hriat reng a pawimawh êm êm a. Kan zirlaiah leh kan thil tihna kawng hrang hrangah, malsawmna dawng tlâka kan thawh rim a, tumruhna kan neih tlat chuan hlawhtlinna leh

ropuina hi tu pawh hian kan nei thei vek a. Mi rethei ber leh rilru chak lo berte pawh kan thawh rimna leh kan tumruhnain a tlin phawt chuan mi ropui tak kan ni thei vek a ni.

Thu pawimawhte

beidawnthlâk	chhuk chho	tumruhna
hlawhtlinna	taihmâkna	tawpsan
thawh rimna	vanneihna	diriamna

TIH TURTE

1. Heng zawhnate hi chhang teh.
 - (a) Eng vangin nge nu leh paten lehkha zir hrâm hrâm turin an fate an fuih ðhin?
 - (aw) Hlawhtlinna hlawh chhuak turin eng thilte nge pal tlang ngai?
 - (b) Pathianin mal a sawm ðhinte kha eng ang mite nge ni?
 - (ch) Pearl S. Buck-i kha engtin nge khawvelah a hming a lo than tâk êm êm?
2. In zirlaiin Charles Dickens-a mi ropui a lo nih theih dan a sawi kha han sawi teh.
3. In zirlai bu-a mi ni lo mi hlawhtling i hriat pakhat hming sawi la, a lo hlawhtlin chhoh dan han sawi bawk teh.
4. Heng a hnuaia thute hmang hian sentence han siam teh.
 - (a) zut zut
 - (aw) sauh sauh
 - (b) hrâm hrâm
 - (ch) ngawih ngawih
 - (d) liau liau

5. I puitlin huna nih i tum sawi la, chumi ni thei tura i tih tur ni-a i hriat han sawi teh.
6. Heng a hnuaia thute hi a awmzia han sawi fiah teh.
 - (a) hlawhtlinna tlang chhip
 - (aw) lungngaihna leh tahna
 - (b) mi chung a lêng
 - (ch) chhuk chho
 - (d) tumruh
7. A hnuaia column **A** leh **AW**-a mite hi a inmil thai zawm rawh.

A	AW
Charles Dickens	lirnghing
Lalliana Mualchin	thu ziak thiam hmingthang
Pearl S. Buck	tumruhna leh taihmakna
Mi ropui	The Good Earth

8. **Group Work**
 Group hrang hrang paliah inthen ula, group tinin mi ropui in tih pakhat theuh chanchin sawi ula, chung in sawi zinga ropui in tih ber leh a chhan han sawi ho teh u.
9. **Project**
 In venga mi hlawhtling pakhat chanchin in nu leh pate zawt ula, a chanchin chu han ziak chhuak teh u. Amah emaw, a chhungte emaw hnen atangin a chanchin zawt Chiang se. Report a ziah chu class hmaah chhiar chhuak se.

ZIRLAI 24

MIZO INCHEINA



Ni khat chu Pu Zoduha hian an nupa thlalâk khaina a siam ṭha a. A tunu Zopari sikul bâng chu a bulah chuan a lo kal a; a pi leh pu thlalâk chu a en vang vang a, “Awi, ka pi hi a mak reuh! Puan te hi a veng vel a, pheikhawk pawh a bun si lo,” a ti a. Zoduha chuan, “Puan a veng i ti elo? A ven loh kha, a bih a nih kha,” a ti a. Zopari chuan, “Veng leh bih chu eng nge a danglamna?” a ti a. A pu chuan, “E khai! I la hre hrang ve lo a ni maw? I pi puan kha va la teh, ka lo hrilh ang che,” a ti a. Zopari chuan puan chu a va la a.

Zoduha chuan, “Hei, en rawh le. Mipain puan kan ven chuan khûp khuh lo tâwk tur velin ti hian kan zial tawm ṭeuh va, kâwngah kan han vêt pheih a, a hmâwr lehlamin kan vêt lêt leh a, kan khêl zawnah hian puan inthuah chu kan lip chhuak ṭhin a ni,” a ti a. Zopari chuan, “Mipa puan veng ka hmuh pawh ka hre lo ve a,” a lo ti a. A pu chuan, “Tun hma chuan mipa chuan puan kan veng vek ṭhin. Tun hnu hi chuan an veng ta mang lo. Thinglâng khuaah lo pheih chuan mipa puan veng hmuh tur an awm ta lo a nih hi,” a ti a.



Zopari chuan, “A nih leh hmeichhiain engtin nge an tih?” a ti a. Zoduha chuan, “Hmeichhe puan bih dan ve thung chu

an zial tawm ve lo va, an khêl zâwnah ni lovin an dul zâwnah an lip chhuak a,” tia sawi chungin a han bih chhin a, “A chang chuan kawr ha lovin an zak hnuaiah an vêt pheï a, chu chu ‘**thin bih**’ an ti a, ðhenkhat chuan ‘**hnu bih**’ an ti bawk,” a ti a.

“Mahse, tunlai chuan khati’n tu man an ti hlei nê̄m, an khêl zawnah an bilh lut mai alawm,” Zopari chuan a ti a. A pu chuan, “An bilh lut emaw an lip chhuak emaw pawh ni se, hmeichhiain puan an inbel chuan puan an bih a ni tho ang chu,” a ti a, a nui deuh suk a.

A ðhutna a sawn rem hnu chuan Zoduha chuan a sawi zui leh ta zel a, “I e, Parte, Mizo hmeichhiain puan an bih hi incheina kawnga Mizo min ti-Mizotu ber a ni a. Hnam dangin silhfen aṅanga Mizo min hriat hran mai theihna awm chhun a ni. Hemi kawngah hian Mizo hmeichhiate hi an fakawmin an chhuanawm khawp a ni. Nang pawh khawhar inah te, biak inah te chuan bih ziah la, khawlai lē̄nnaah te pawh a tam thei ang ber bih ðhin ang che,” a ti a.

Zopari chuan, “A nih leh ka pu, Mizo incheina an tih hi eng ang hi nge?” a ti a. A pu chuan, “Tunlai chuan Mizo incheina han tih bik fak tur kan nei lē̄m lo,” a ti a. Zopari chuan, “Mizovin incheina bik eng mah kan nei lo a maw?” a ti a.



A pu chuan, “Neih chu nei e. Chapchâr kûtah leh Mizo hminga thil tihnaah te hian Mizo incheina anga hman ðhin chu kan nei ngei alawm. Mipain ngotekherh emaw, pawndum emaw an veng a, kawr ðial an ha a, diar ðial an khim bawk a. A nei chuan vakul chang emaw, thlanthla chang emaw an tawn bawk ðhin. Hmeichhia chuan kawrchei an ha a, puanchei emaw, ngotekherh emaw an bih a. Vakiria te an khim a, ðihnâ te an awrh bawk. Kawrchei leh hmarâm nen chauhva inchei pawh an awm bawk,” a ti a.

Zopari chuan, “Eng âm maw? Eng tihna nge?” a lo ti a. Zoduha chuan, “Hmarâm. Mizo pawnfên mawi ber a ni a, nalh tak a ni, a chhing deuh mai pawh a,” a ti a. Zopari chuan, “Hmârâm a ni zawk lo maw?” a ti a. A pu chuan, “Ni teh suh e. Hmarcha tiha ‘*hmar*’ ang hian hmarâm tih tur a ni,” a ti a.

Zopari chuan, “Chuti chauh chu maw incheina an neih?” a ti a. A pu chuan, “Ni teh nang. Mizo hmeichhiate hi la deh thiam tak mai an ni a, puan chi hrang hrang nalh tak tak an tah ðhin. Thangchhuahpuan te, pawndum te, tawlhlohpuan te, zodipuan te hi ven chi leh sin chi an ni a. Diarðial leh iptechei te pawh incheinaa chhiar a ni bawk,” a ti a. Zopari chuan, “Hriat hran a va’n har awm,” a ti a. A pu chuan, “Kha, i pi a lo hawn kha, a thûla mi en dil la, i hre vek mai ang,” a ti a. A pi nen chuan an va en ta a.

Zopari chuan, “E heu! A va han nalh hlawm ve aw! Ka pi, heng hi nangma tah vek maw?” a ti a. A pi chuan, “Ni e, nutling tan chuan hetiang tah te chu a harsa vak hlei nem. Nang pawhin i tum chuan i tah thiam lutuk ang,” a ti a. Zopari chuan, “A nih leh heng hi tu chin chhuah nge?” a ti a. A pi chuan, “Ka

hre ve lo, i pu zâwt rawh,”a ti a. A pu chuan a zawhna chu a rawn hre hman a.

A pu chuan, “E le! Mizo hmeichhiate maw le. Tun hma chuan la par var chauh hian puan leh thawmhnaw dang pawh an tah thin a. Ting hmangin la dum an siam a, thingsaphu pil te, sentezêl pil te hmangin an chhum sen bawk thin. Vai la te, rawng te an neih chinah heng puan zeh mawi hi chu an ching chho zel a nih a rinawm.”

A pu chuan a sawi zawm zel a. “Chumi hma pheii chuan siapsuap leh hnawkhâl te an inbel thin a ni awm e. Hruikhau hih ram khawma siam niin an sawi,” a ti a. Zopari chuan, “A zahthlâk duh awm,” a lo ti sap a. A pu chuan, “Saruaka awm ngawt ai chuan a ziaawm deuh ang chu,” a ti a.



Hnawkhâl ha lai

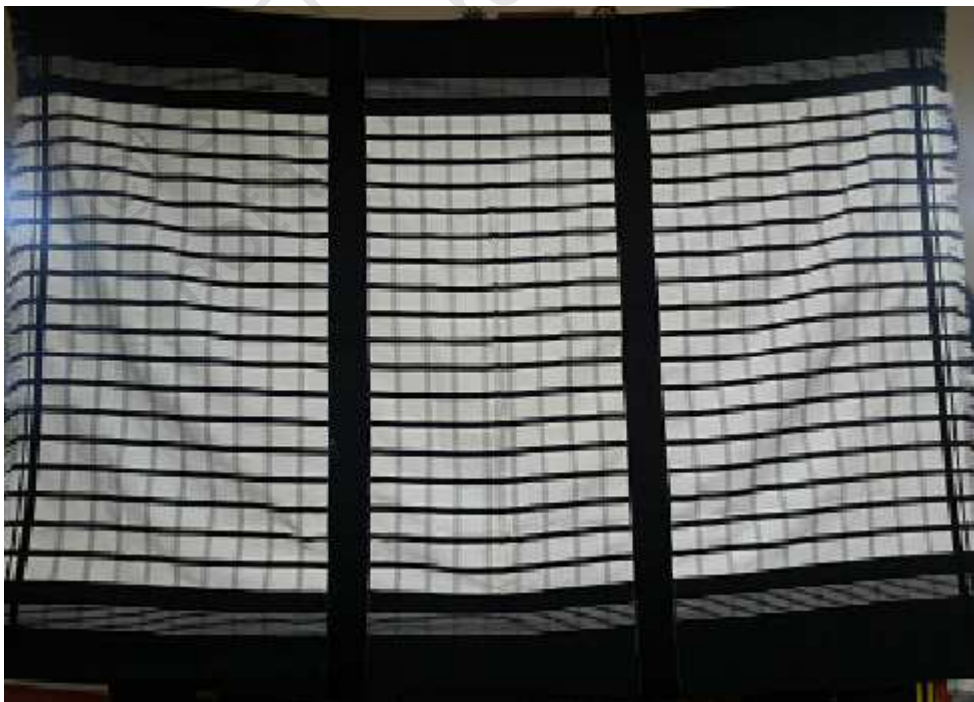


Siapsuap ha lai

Puan chi hrang hrang lem.



Pawn dum



Ngotekherh



Tawlhlohpuan



Puanropui



Puanchei



Puanrin

TIH TURTE

1. In zirlai bu-a mipa puan ven dan leh hmeichhe puan bih dan kha in zirtirtu hovin han zir teh u.
2. A âwlahte hian dah khat rawh.
 - (a) Hmarâm chu Mizo pawnsfên _____ ber a ni.
 - (aw) Hmanlaiin mipain puan an _____ a, hmeichhiain an _____ thung.
 - (b) Hmeichhia chuan _____ an ha a, _____ emaw _____ emaw an bih thin.
 - (ch) Hmarcha tiha 'hmar' lam ang hian _____ hi lam tur a ni.
 - (d) Mipain _____ emaw puan _____ emaw an veng thin.
 - (e) A nei chuan _____ chang emaw _____ chang emaw an tawn thin.
 - (f) Hmanlai chuan _____ chu hmeichhe inthumna a ni.
 - (g) Mipa inbel thin hming chu _____ a ni.
3. Heng zawhnate hi chhang rawh.
 - (a) Zoduha-te nupa an thlalâka an lan dan kha sawi fiah rawh.
 - (aw) Hmarâm hi eng nge ni? Eng nge a pawimawhna?
 - (b) Hmeichhe puan bih dan kha ziak rawh.
 - (ch) 'Thin bih/hnu bih' dan kha ziak rawh.
 - (d) Mipa puan ven dan kha ziak rawh.
4. Zopari puin Mizo incheina tia a sawite kha han ziak teh.

5. Hengte hi eng atan nge an hman ðin?

- (a) ðing _____
- (aw) thingsaphu pil _____
- (b) Vai la _____
- (ch) rawng _____
- (d) sahmul _____
- (e) sentezêl pil _____

6. Heng thu hmang hian sentence siam rawh.

- (a) tah _____
- (aw) veng _____
- (b) bih _____
- (ch) sin _____
- (d) ðing _____

7. Heng thute hi a modified form ziaak rawh.

Entir nan: kawr ha – kawr hâk

- (a) puan veng _____
- (aw) siam ðha _____
- (b) taima _____
- (ch) bilh lut _____
- (d) lip chhuak _____
- (e) hre hrang _____

8. Heng thumalte hi a ep thumal ziaak rawh.

- (a) thuhmun _____
- (aw) kawr phelh _____
- (b) bih fual _____
- (ch) thu harsa _____

9. Heng incheinate hi mipa incheina leh hmeichhe incheinaah thliar hrang rawh:

siapsuap

hnawkhâl

puan veng

hmarâm

puan bih

Mipa

Hmeichhia

10. A chhiar dan tur dik takin chhiar teh.

Vanah khian nang lo chu tu nge ka neih? Leiah pawh hian nang lo chu ka duh tu mah an awm lo. Ka tisa leh ka thinlung hi a chau ta a; nimahsela, Pathian chu kumkhuaa ka thinlung chakna tur leh ka chanvo tur a ni.

© SCERT
not to be republished

ZIRLAI 25

HMINGSANGA HUAISENNA

Liansailova



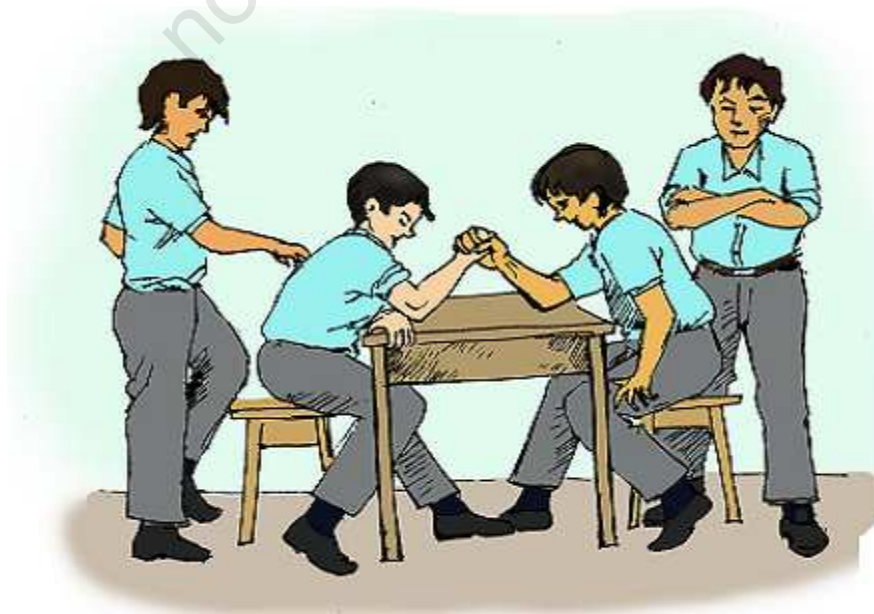
LAN KHATNA

(An sikul thlen hma lawk kawng sira chawlh bûkah Hmingsanga leh Ramthlengaten kut an lo inel h a. An aia lian deuh Zosiama leh Lianbikaten an lo dinchilh a)

Zosiama : Vawi khat ve ve in chak phawt. Han ti leh teh u.

Lianbika : Nia, in la ãang tak tak lovin ka hria, han ãang tak tak teh u. Ramthleng, ka ãan che a nia aw. (Ramthlenga hnungah a beng thak thak a)

Zosiama : Kei pawh Hmingsang, ka ãan che a nia. I hneh loh vaih!



Khai le!

(An han inelh leh a, Hmingsanga a chak a)

Ṭha lutuk!

(A ban a phar hluai a)

Lianbika : Ho lutuk! Tunah Ramthlenga a chak ve leh tho vang. Ṭan leh rawh u le. (An inelh leh ngat ngat a, Ramthlenga a chak ve thung a) Ka tih rêng kha!

Zosiamama : In va inhneh tâwk êm êm ve! Vawi khat dang a la ngai a nih hi, chuta chak zawk zawk a ni tawh mai.

Lali : Lianbik, eng nge in la tihmuan? In tlai leh ang e aw.

Lianbika : Kan lo kal ṭep, kan tlai lo vang. Kan rawn ûm ang che.

Lali : Zosiam, hrem in tawk leh ang e aw! Nuam i tih vak loh kha.

Zosiamama : I chhe zawt zawt êm mai. Tu nge hrem te chu nuam ti rêng ang? Kal mai teh.
(Lali chuan a kalsan ta a)

Khai le! E, ngawi lawk, tu nge huai zawk che u?

Lianbika : In insual tawh em, vawi khat tal?

- Hmingsanga : Insual lo, kan insual dawn bawk lo, a âthlâk mai mai.
- Zosiana : (Hmingsanga bânah a chelh a)
Insual i hlau a ni maw?
- Hmingsanga : Aih, tlai ka hlau, i kal tawh ang u.
- Lianbika : Nang, Ramthleng, insual i ngam em?
- Ramthlenga : Ngam chu ngam; mahse...
- Lianbika : ‘Mahse’ tih a ngai lo. Insual rawh u.
(Hmingsanga lamah Ramthlenga a nam phei a. Hmingsanga a lo awm sawn hman avangin Ramthlenga a pai khat khat a)
- Hmingsanga : Kan insual chuang lo vang. Ka kal daih dawn!
(A tâl chhuak thut a, a tlân ta daih a)
- Zosiana : A va ngeiawm e!
(A hre chhuak thut a)

E, tak a, Lianbik, sikul thleng hma turin min tih kha!
- Lianbika : (A phu deuh zawk a) A ni tak e! Hawh, i tlân ve nghal ang.

(An tlân nghal a. Ramthlenga pawh chu a han tlân ve dawn a, a tlu ta hlauh mai a. Thawh a tum a, a tho hlei thei ta lo va. Na nei tih hriat takin a ke ding lam vuanin a thusawp ta a. Hmingsanga chu a lo tlân lêt a)

Hmingsanga : Ramthleng, i va tlu na awm ve! Ka rawn pui ang che.

Ramthlenga : Hmingsang, i tlân daih a ni lo'm ni?

Hmingsanga : Ka rawn hawi lêt laiin i tlu ka hmu che a, ka lo lêt leh alawm. I ke i tinâ em ni?

Ramthlenga : Ka ke ding lam kheimit bawr vel hi a na lutuk a, a tliak a ni ang.

Hmingsanga : A ulh a nih ka ring, a tliak lo vang, hlau suh. Khawi maw, ka lo en chiang ang e.
(A thiam ang angin a han khawih vel a)



Ramthlenga : A ziaawm deuhvin ka hria. Thawh ka'n tum chhin ang e.
(Hmingsangan a lo pui a, a ding thei ta a)

Lei chu ka rap tha ngam lo mai thei a ni.

Hmingsanga : Inkaihkuaha kal i tum chhin ang hmiang?
(An inkaihkuah a)

Ramthlenga : Mahse, Hmingsang, keimah vangin i tlai zo vek dawn asin.

Hmingsanga : A pawl hlei nem. Ti rawh, han pên teh.

Ramthlenga : Aw le, kal ila.
(Dim tein an han kal a. Ramthlenga chu a bai saih saih a, an kal liam ta a)

LAN HNIHNA

(Sikul kawtah Lianbika leh Zosiama an ding khup dun zai mai a. Headmistress-in a lo hau mek a)

Headmistress : In pahnihin lo kal hma turin ka hrilh che u a, in lo thlen hun tur pawh ka tuk thlap a ni lo'm ni? In va tlai êm êm ve!

Lianbika : Kalkawngah mi an lo insual a, kan en a.

Headmistress : Tute nge insual?



Zosiamama : Hmingsanga leh Ramthlenga.

Headmistress : Tak tak maw?

Lianbika : Aw, ni e.

Headmistress : Tichuan, thelh pawh in tum lo va maw?

Lianbika : An insual rei lo va.

Zosiamama : Kan hmanhmawh bawh si a.

Headmistress : Chuti chung chuan in rawn tlai phah bawh si! In thu leh ui bengah hlin tur a awm lo ve. In Headmistress ka ni a, 'ka pi' min tih nachang lah in hre hek lo. Dawt in phuah chawp a ni ti rawh u.

Zosiamama : Phuah chawp lo, ka pi.

Lianbika : Dawt kan sawi lo, ka pi.

Headmistress : Dawt in sawi a nih chuan in châk lo viau vang, hremna chhan tur che u ka ngah tawh lutuk. In hria maw?

Lianbika : Hria e.

Headmistress : ‘Ka pi’ ti rawh.

Lianbika : Ka pi.

Headmistress : Nang, Zosiam?

Zosiam : Aw, ka pi.

Headmistress : A tha e.

(Hmingsanga leh Ramthlenga an rawn inkaihkuah lut a)

E heu! He mite pahnih hi a ni lo’ m ni insual in tih kha? In sawi dan leh kan hmuh dan chu a va inpersan si ve!

Headmistress : (Hmingsangate thian dun hnenah)
Engtizia nge nangni pahnih chu?
(An ding a)

Hmingsanga : Ka pi, ka thianpa hi a ke a nâ a, kan lo kal chak thei lo va.

Ramthlenga : Ka pi, ka tlu palh a, ka ke ka tinâ a. Hmingsanga hian min ÷anpui a, amah rinchhanin ka lo kal a. Keimah vangin a tlai zo ta vek a ni. Pawi ka ti khawp mai.

Headmistress : A ni maw? Kha, i ke chu a vûng a nih nghe nghe kha.

Lianbik, Ramthlenga hi pua la, office panpui rawh. Zirtirtuten lo buaipui rawh se. Nang chu lo kir leh nghal ang che.

Lianbika : Aw le, ka pi.

(Lianbika chuan Ramthlenga chu a paw bahlât a, a kal a)

Headmistress : Hmingsang, i ÷hianpa chuan a ke chu engtia tinâ nge a nih a? In insual em ni?

Hmingsanga : Insual lo ve, ka pi. A tlân tur a tlu palh a ni. (Lali a lo kal a)

Lali : Ka pi, keiman ka sawi thei ang em?

Headmistress : Hriat i nei em ni, Lali?

Lali : Aw, ka pi. Ka mit ngeiin ka hmu a.

Headmistress : Aw le, han sawi teh.

- Lali : Ka sikul kal turin anni pali kha kawng sira an lo awm ka hmu a. Ka kal pelh hnuah ka ngaih a tha lo deuh va, hla vak lo atangin ka enthla ta a. Lianbika leh Zosiama khan anni pahnih hi insualtir an tum niin ka hria, an man a, an nam a. Mahse, Hmingsanga hi a tâl chhuak a, a tlân ta daih a. An rawn um zui avangin a biru a, Ramthlenga tlân tur a tluk khan a tlân lêt a. An inkaih thawh lai velin ka rawn kalsan a.
- Headmistress : Engati nge i puih ve loh va?
- Lali : Tlai ka hlau va.
- Headmistress : Thil rêng rêng hlauh hun tur a awm a, hlauh loh hun tur a awm ngai. Hmingsanga hi chuan chu chu a hria a ni ang, a fel hle a ni.
- Lali : Ka pi, ka tisual a ni, min ngaidam rawh.
- Headmistress : Eng pawh ni se, i zarah thu dik ka hriat avangin ka lawm e. I kal thei ang.
- Lali : Ka pi , ka lawm e.
(Lali a kal a)
- Headmistress : Hmingsang, i huaisen hle mai. Tukina i thil tih dan hi a entawn tlâk tak zet a ni. Kan sikul naupang zawng zawng ka hrilh ang a, huaisenna awmzia an zir chhuah ka beisei.

Zosiam, in dawihzep leh in dawt hehzia chu kan hre hma hle mai maw? Nangni thiandun hi chuan rilru in tihah mang tak e! In nungchang in sim loh chuan in tan a la pawl viau ang. Engtin nge kan han tih ang che u aw?

Tunah chuan hei, Hmingsanga hi pua la, min rawn zui ang che.

Zosiam : A ke a na ve em ni, ka pi?

Headmistress : Na lo ve. Thu awih zirtir i ngai alawm. (Headmistress chu a kal a. Zosiam chuan peih loh hmel takin Hmingsanga chu a pua a, a zui ve ta hnak hnak a)

Thu pawimawhte

inelh	inhneh	sawp	ziaawm	kheimit	tliak
khup	thelh	hlin	vûng	enthla	tihpalh
inpersan					

TIH TURTE

1. Heng zawhnate hi chhang teh.
 - (a) Hmingsanga leh Ramthlenga te khan chawlh bûkah eng nge an tih?
 - (aw) Hmingsanga leh Ramthlenga te kut inelha khan tu nge chak zawk?

- (b) Zosiana leh Lianbika te khan Hmingsanga leh Ramthlenga te kha eng nge tihtir an tum? An hlawhtling em?
- (ch) Ramthlenga tlu kha tuin nge tanpui? Engtin nge a puih?
- (d) Engtin nge Headmistress-in Hmingsanga a fak?

2. Heng mite hian an tlai chhan engtin nge an sawi?

- (a) Hmingsanga _____
- (aw) Ramthlenga _____
- (b) Lianbika _____
- (ch) Zosiana _____

3. Heng thu hmang hian sentence han siam teh.

- (a) enthla _____
- (aw) kheimit _____
- (b) inpersan _____
- (ch) tihmuan _____
- (d) inelh _____

4. He thawnthu hi han phuah chhunzawm teh.

Tum khat chu Hmingsanga hian a thianpa Ramthlenga hnenah, "Rama, i ke ulh kha

5. Heng thu hi awmze nei thei turin a hma lamah leh a hnung lamah thu han belh teh.

Entir nan: hneh = inhnehna

- (a) elh = _____
- (aw) ulh = _____
- (b) hlin = _____
- (ch) sual = _____
- (d) biak = _____

6. He zirlai chung thûah hian ‘bai saih saih’ tih kan hmu a, bai hi verb a ni a, saih saih hi bai hrilh fiahtu double adverb a ni. Heng verb thumalte hrilh fiah tur hian a zawnah double adverb ziaak ve rawh.

- (a) a ṭawng _____
- (aw) a bû _____
- (b) a zai _____
- (ch) a sûr _____
- (d) a de _____

7. A hnuaia thu hi tu sawi nge?

- (a) Ka mit ngeiin ka hmu a.
- (aw) Engti zia nge nangni pahnih chu?
- (b) An insual rei lo va.
- (ch) A va ngeiawm e!
- (d) In tlai leh ang e aw.
- (e) Insual i hlau a ni maw?

8. Heng thute hi an awmna tur dik takah dah rawh.

chawlh bûk, inel, phar, bêng, bân, tlân, kheimit, tliak, khawih, zirtirtu	
Thil tih sawina bawm	Thil hming sawina bawm

9. Mi i puih theih dan tur kawng nga nalh takin han ziaak teh.

10. Sikula tih tur leh tih loh tur panga ve ve han ziaak chhuak teh.

Tih tur	Tih loh tur
1. _____	1. _____
2. _____	2. _____
3. _____	3. _____
4. _____	4. _____
5. _____	5. _____

11. **Project**

In duh duh thupuia hmangin drama han ziaak ve teh u le.
(A theh luh hun atan hun bi tuk siamsak ni se. Entir nan-
kar khat chung, thla khat chung...etc.)

ZIRLAI 26

THIAMNA LEH HMASAWNNA



Kum zariat lai kal taah khan Persia lal pakhat chuan China lal fanu hmel tha tak mai chu nupuia neih a duh a. China lal fanu hnenah chuan a chhiahhlawhte a tir ta a. Persia ram aṭanga China thleng tur chuan kum hnih lai tuipuiah kal a ngai a ni.

Persia lal mi tirhten China ram an thlena, an kal chhan an han sawi chuan China lal fanu chuan a lo duh ve mai a, Persia lal nei tur chuan a inpuahchah ta a. Mi sanghnih lai nen lawngin Persia ram chu an pan ta a. An zin kawng râpthlâk takah chuan mi zaruk lai an thi a. Chutih lai chuan Persia ram lal chu a thi a; a thih thu hre lo chuan China lal fanu chuan Persia ram chu a thleng ta a. Persia lal fapa chu a pa aiah a lo lal tawh a; tichuan, lal fanu chuan Persia lal fapa chu pasalaha nei ta zawk a.

Tunah erawh chuan Persia ram aṭangin darkar ruk lekah China a thlawh thlen theih ta! Chu aia chak zawk chu radio emaw, television emaw hmangin rang takin chanchin tharte kan hre thei ta zung zung mai. Inkhel hmuhnawm tak tak: entir nan, Brazil leh England football khel lai mêkte pawh a hmuna awm ang maiin kan lo en thei ta reng mai! Science leh technology thiamnain hma a sawn nasat êm avangin tunah chuan khawvel hmun hrang hrang awlsam zawkin kan lo be thei ta. Thingtlang kilkhâwr berah pawh iptea ah mai theih inbiak pawhna kan lo kawl ta fir fer mai a nih hi!

Tuna i lehkhabu chhiar lai ngei pawh kha science thiamna hmanga siam a ni a. Kan lehkhabu te, hun min hrilhtu sana te, kan thil ziahna pen te leh kan ni tin nuna thil tangkai, awlsam zawka rawng kan bawl theihna thleng hian science thiamna hmanga kan neih a ni.



Heng thlawhtheihna te, radio te, kawlpheha te leh damdawi lam hmu chhuaktute hi i ngaihtuah ve tawh ngai em? Heng hmu chhuaktute hian nasa taka an lo ngaihtuah leh an thawh rimna avangin heng thilte hi an hmu chhuak a ni. A nih leh eng vangin nge apple rah hi lei lama a lo tlâk kher? Kan awmna lei hian hipna a neih vang a ni. He thil hmu chhuaktu Sir Isaac Newton hi a thil hmuh chhuah ropui tak tak avangin ‘Tunlai Science Thiamna Pa’ tia vuah a ni.

Thlawhtheihna chak chi ‘Jet’ thlawhtheihna te hi a thlâwk chak êm êm a, ri aia chakin an thlâwk thei a ni. Entir nan: i thian chu hmun hla takah dintir la, i au rual chiahin jet thlawhtheihna chu i awmna ațangin i thianpa lam panin thlâwk chhuak ta sela i thianpain i au ri a hriat hmain jet thlawhtheihna

chuan i ṭhianpa awmna chu a thleng hman dawn a ni. Heng ai pawha la chak leh chu boruak lawng (space craft) hi a ni. Boruak lawng hi scientist-te chuan van lam chanchin zir nan leh arsi dangte chanchin zir nan an hmang ṭangkai hle a. Kum 1969 khan Armstrong-a leh Aldrin-a te chu Boruak lawng hmang hian thlaah an han ṭum a. Heta ṭang hian van sang chanchin chu nasa lehzualin khawvelin an lo zir ṭan ta a ni.

Mi ṭhenkhat chu boruak lawng hmangin intihhlim nan van sangah an zin a. Nangni pawh in lo ṭhang lian ang a, anmahni ang hian in la zin ve thei dawn a ni.

TIH TURTE

1. Heng zawhnate hi chhang rawh:
 - (a) Persia lal khan tu nge nupuia neih a duh?
 - (aw) Hmanlai khan Persia ram aṭanga China thleng turin engtia rei nge thang ngai?
 - (b) Kan ni tin nuna thil pawimawh pali, science thiamna avanga kan neihte ziaak rawh.
 - (ch) ‘Tunlai science thiamna pa’ an tih kha tu nge ni?
 - (d) Jet thlawhtheihna aia chak zawk kha eng nge ni?
 - (e) Tute nge thlaa lawn hmasa berte kha?

2. Tunlaia inbiak pawh awlsam ta êm êm mai hi eng nge a chhan?

Tunlai huna awlsam taka inbiak pawhna hmanraw chi hnih ziaak rawh.

3. Heng hi tute hmuh chhuah nge?
- (a) radio _____
- (aw) television _____
- (b) thlawhtheihna _____
- (ch) fountain pen _____
4. Eng vangin nge apple rah hi lei lamah a tlak kher?
5. Heng thu hmang hian a kar âwlah dah khat rawh:
science, Brazil, thiamna, entir nan, England, mi thiamte, television, inbiak
- Tunlai chuan _____ in hma a sawn nasa tawh êm êm a,
 _____ i han chhuah a, _____ leh _____ inkhel
 hmuhnawm tak pawh a hmuna awm ang maiin in lo en
 thei ta. Hengte hi _____ thiamna vang a ni. _____
 awlsam zawka kan _____ pawh zung zung theihna hi
 rim taka _____ thawhna rah a ni.
6. Heng hmang hian sentence siam rawh:
- (a) awlsam
- (aw) chanchin thar
- (b) thlâwk
- (ch) zung zung
- (d) tangkai
7. Chhungkaw khawsakna lo danglam ta êm êm hi in zirtirtu
 hovin sawi khâwm ula, a chhan han ziak teh u.

8. A hnuaiia thute hi chhiar la, ṭawngkam dik lo awm apiang a dikin thlâk rawh.

i) Pawisa i nei ngah em?

ii) Ka tui in a hal.

iii) Ka muthilh a chhuak.

iv) Zingchaw ei a hun ta.

v) Nachinah motor an insu.

vi) Putar khawngaihthlakawm deuh ka hmu.

vii) Chhunchaw i ei dawn em?

viii) Khawiah nge in lêng?

ix) He nu thil zuar hi lei rawh.

x) Nang, tlaichaw i ei tawh em?



MEN AT WORK

ROAD SIGNS



CROSS ROAD



**VEHICLES
PROHIBITED IN
BOTH DIRECTION**



**STATE COUNCIL OF EDUCATIONAL RESEARCH AND TRAINING
MIZORAM : AIZAWL**